

Sentinel Vision
SED-1109
11 July 2022

Kaliningrad Oblast, Russian semi-exclave in Europe

Sentinel-1 CSAR IW acquired on 04 January 2019 at 04:51:37 UTC
Sentinel-1 CSAR IW acquired on 16 January 2019 at 04:51:37 UTC
Sentinel-1 CSAR IW acquired on 28 January 2019 at 04:51:36 UTC
Sentinel-2 MSI acquired on 13 March 2022 at 09:50:31 UTC

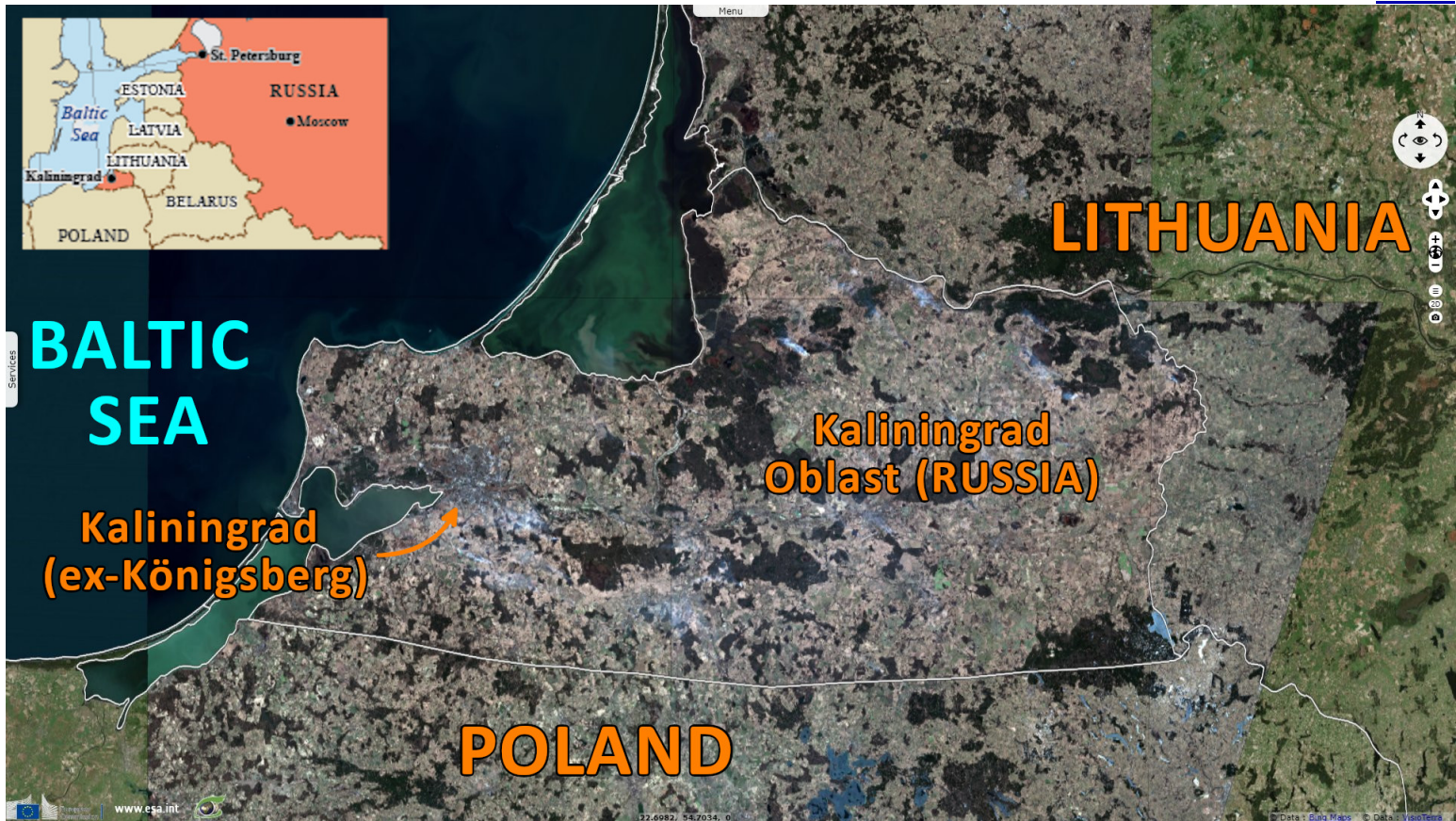
Author(s): Sentinel Vision team, VisioTerra, France - svp@visioterra.fr

Keyword(s): Land, security, transport, Russia, Lithuania, Poland, Germany, Baltic Sea



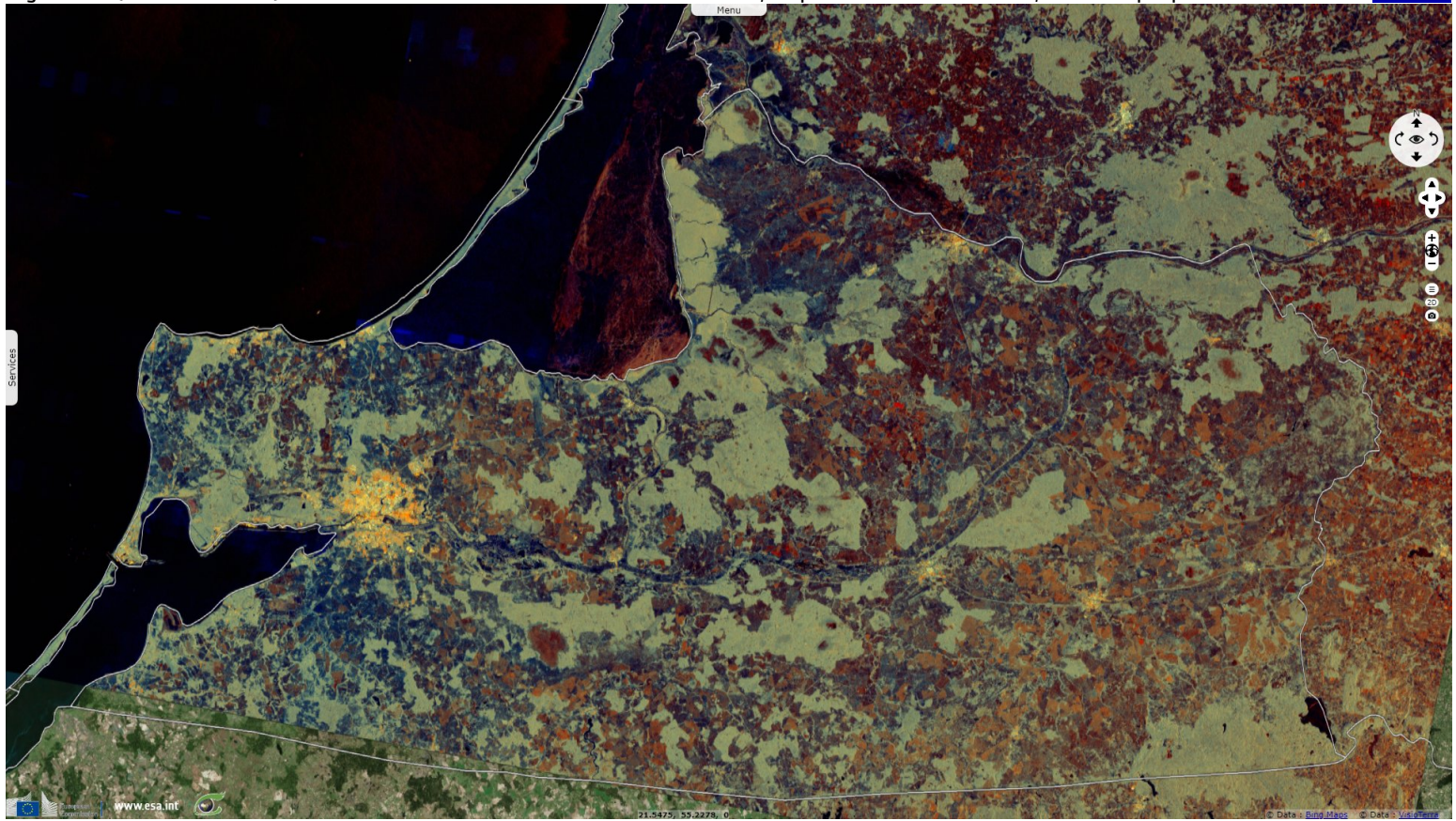
[2D Layerstack](#)

Fig. 1 - S2 (13.03.2022) - This Russian region was part of the State of the Teutonic Order in 1255, then of the German semi-exclave of East Prussia up to 1945.



The area of East Prussia was 36 993 km², which of 15 100 km² were attributed to USSR to compensate for the destruction & losses suffered during the Second World War.

Fig. 2 - S1 (04->28.01.2019) - The oblast had ~1.1 million inhabitants in 1950, displaced from USSR states, 1 million people live there now. [3D view](#)



Of the 2.2 million inhabitants of East Prussia in 1940, most fled. The 193 000 remaining at the end of May 1945 were expelled.

*The views expressed herein can in no way be taken to reflect the official opinion of the European Space Agency or the European Union.
Contains modified Copernicus Sentinel data 2022, processed by VisioTerra.*

More on European Commission space:						
More on ESA:				S-1 website	S-2 website	S-3 website
More on Copernicus program:				SciHub portal	Cohub portal	Inthub portal
More on VisioTerra:				Sentinel Vision Portal	Envisat+ERS portal	Swarm+GOCE portal