

Brasilia, living exemple of a 1960 modernist city, Brazil

Sentinel-1 CSAR IW acquired on 29 April 2015 at 08:44:48 UTC
Sentinel-2 MSI acquired on 08 May 2018 at 13:32:29 UTC

Author(s): Sentinel Vision team, VisioTerra, France - svp@visioterra.fr

Keyword(s): Urban planning, capital city, UNESCO World Heritage, Brazil

[2D Layerstack](#)

Fig. 1 - S1 (29.04.2015) - Brasilia is located atop the Brazilian highlands close to the country's center.

[2D view](#)

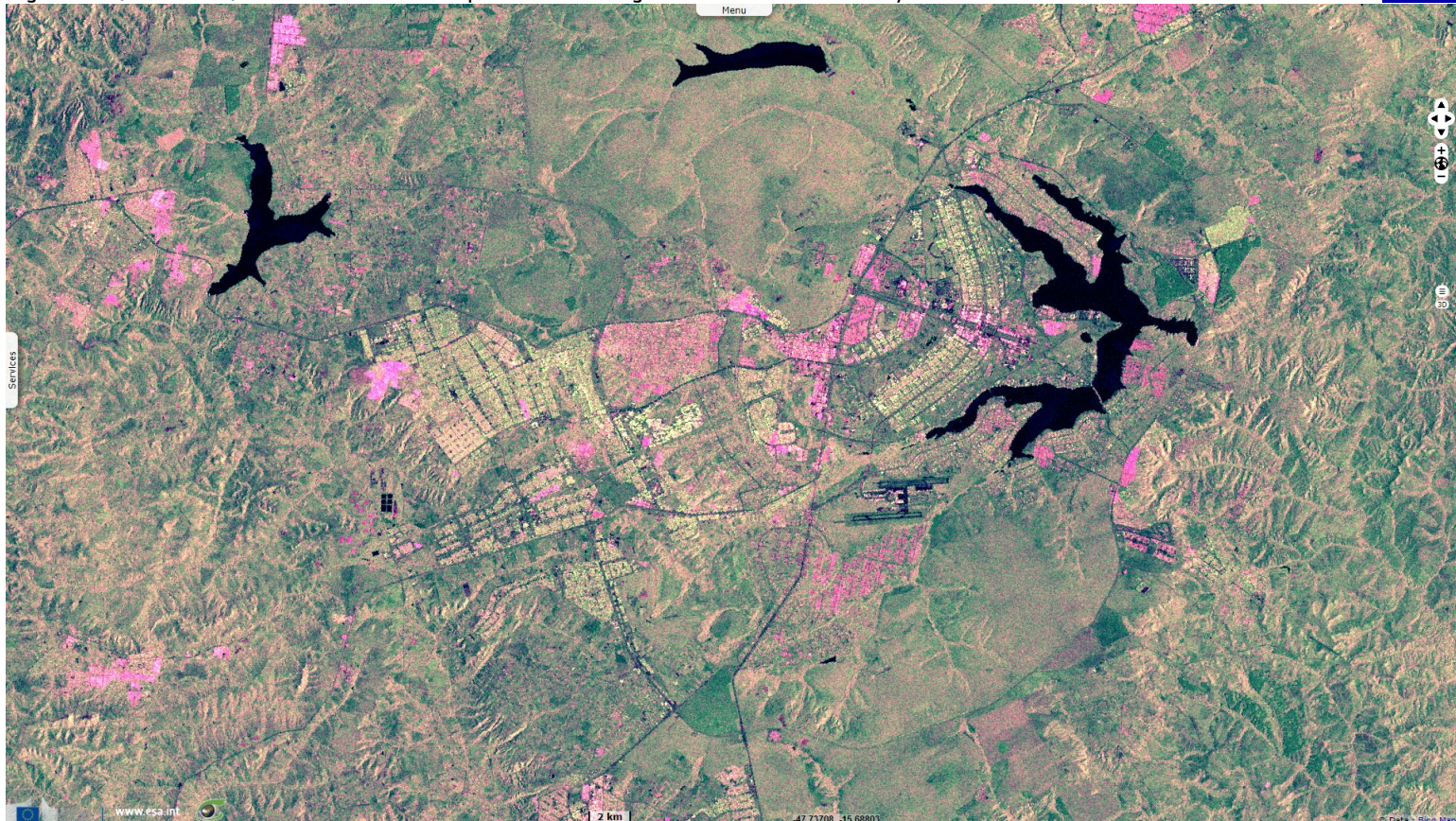


Fig. 2 - S2 (08.05.2018) - President Juscelino Kubitschek initiated its planning & construction in 1960 to relocate the country's activity inland. [2D view](#)



UNESCO designed Brasília as a "City of Design" and as a World Heritage Site due to its modernist architecture and uniquely artistic urban planning.

Fig. 3 - It was built according to the utopist design of Lúcio Costa, a student of Le Corbusier; 4.3 millions people now inhabit its metro area. [2D view](#)

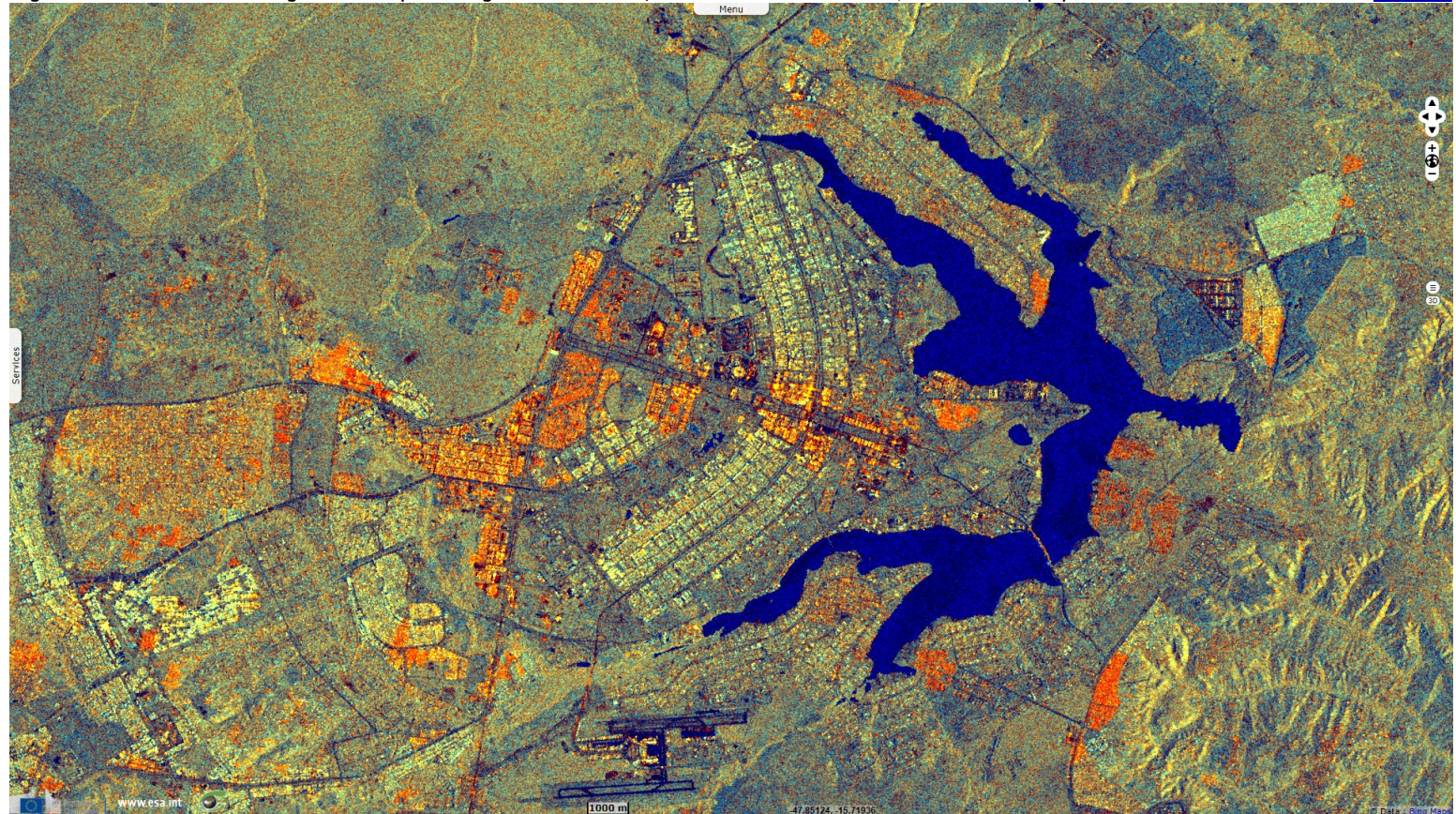














Fig. 4 - The capacity limit in Brasília plan caused many favelas to form in satellite cities as Brazilians migrated, looking for federal jobs. [2D view](#)



*The views expressed herein can in no way be taken to reflect the official opinion of the European Space Agency or the European Union.
Contains modified Copernicus Sentinel data 2020, processed by VisioTerra.*

More on European Commission space:						
More on ESA:				S-1 website	S-2 website	S-3 website
More on Copernicus program:				SciHub portal	Cophub portal	Inthub portal
More on VisioTerra:				Sentinel Vision Portal	Envisat+ERS portal	Swarm+GOCE portal
				CryoSat portal		