

Storm Justine floods rivers of western France

Sentinel-1 CSAR IW acquired on 27 January 2020 from 17:55:01 to 17:55:51 UTC
Sentinel-1 CSAR IW acquired on 28 January 2020 from 17:47:18 to 17:48:33 UTC
Sentinel-1 CSAR IW acquired on 02 February 2021 from 05:59:45 to 06:01:00 UTC
Sentinel-1 CSAR IW acquired on 02 February 2021 from 17:55:06 to 17:55:56 UTC
Sentinel-1 CSAR IW acquired on 03 February 2021 from 17:47:24 to 17:49:04 UTC

Author(s): Sentinel Vision team, VisioTerra, France - svp@visioterra.fr

Keyword(s): Emergency, natural disaster, flood, river, precipitations, France

[2D Layerstack](#)



Fig. 1 - S1 (02 & 03.02.2021) - A large part of the Atlantic littoral has been hit by Storm Justine, here the Loire river valley. [2D view](#) [2D animation](#)

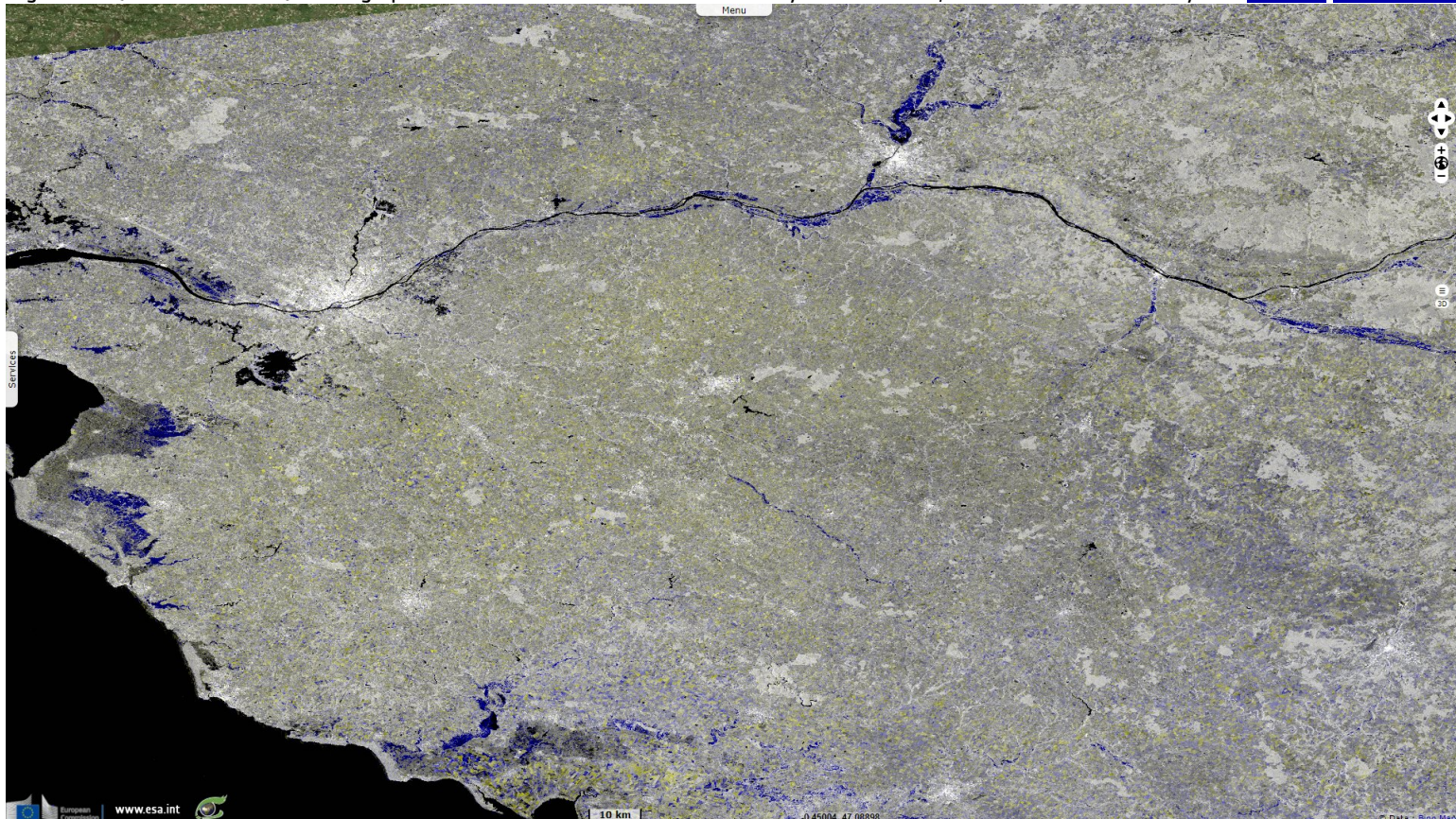


Fig. 2 - S1 (02 & 03.02.2021) - Storm Justine arrived as the soils were already saturated by a rainy month. [2D view](#) [2D animation](#)

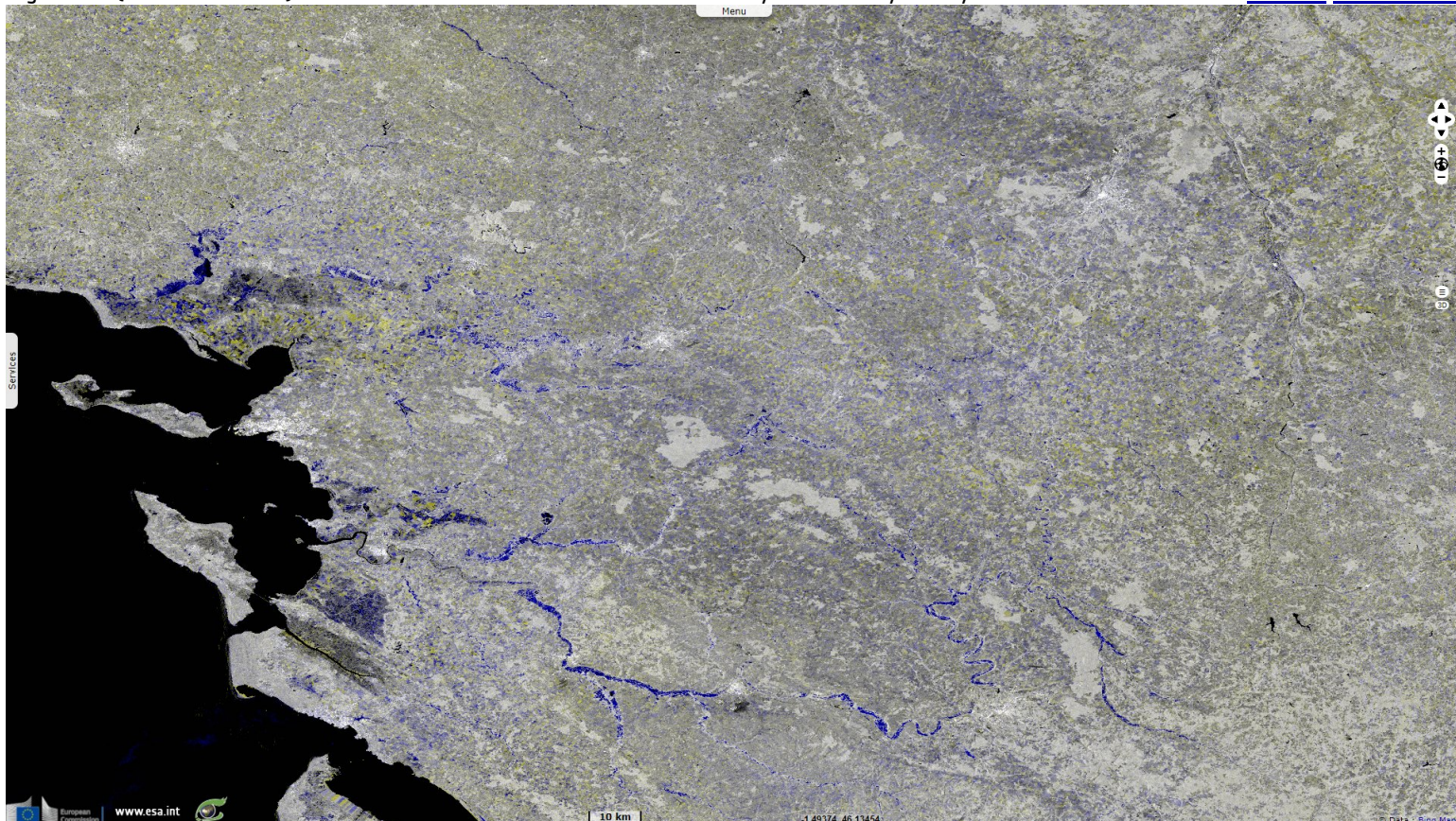


Fig. 3 - S1 (02 & 03.02.2021) - In Aquitaine region, both the Garonne and Dordogne rivers are swollen.

[2D view](#) [2D animation](#)

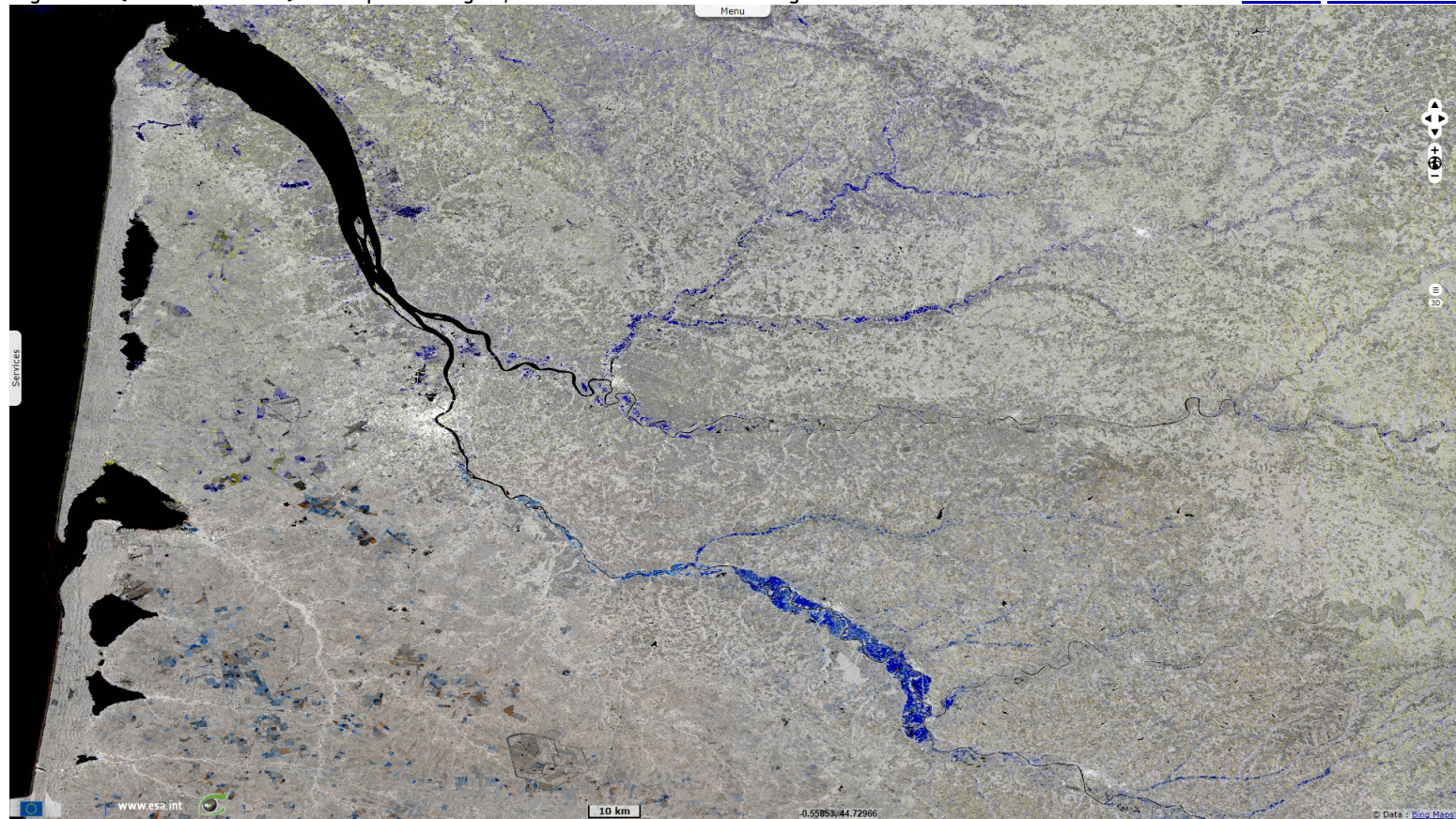


Fig. 4 - S1 (02 & 03.02.2021) - Deeper inland up to Toulouse, excess runoff fed the Garonne.

[2D view](#) [2D animation](#)

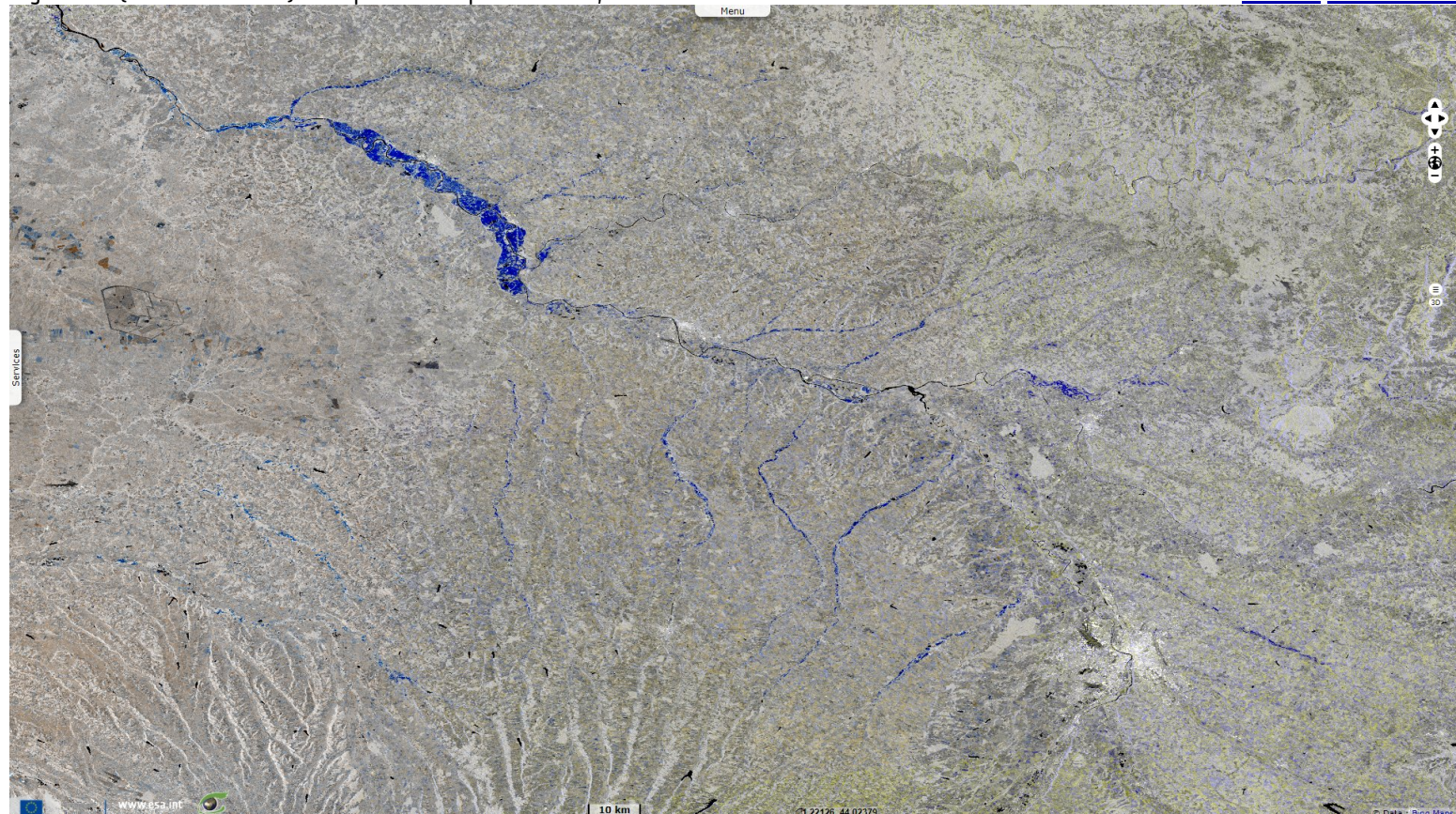


Fig. 5 - S1 (02 & 03.02.2021) - The cities built along the Garonne around Marmande faced their worst flood in decades. [2D view](#) [2D animation](#)

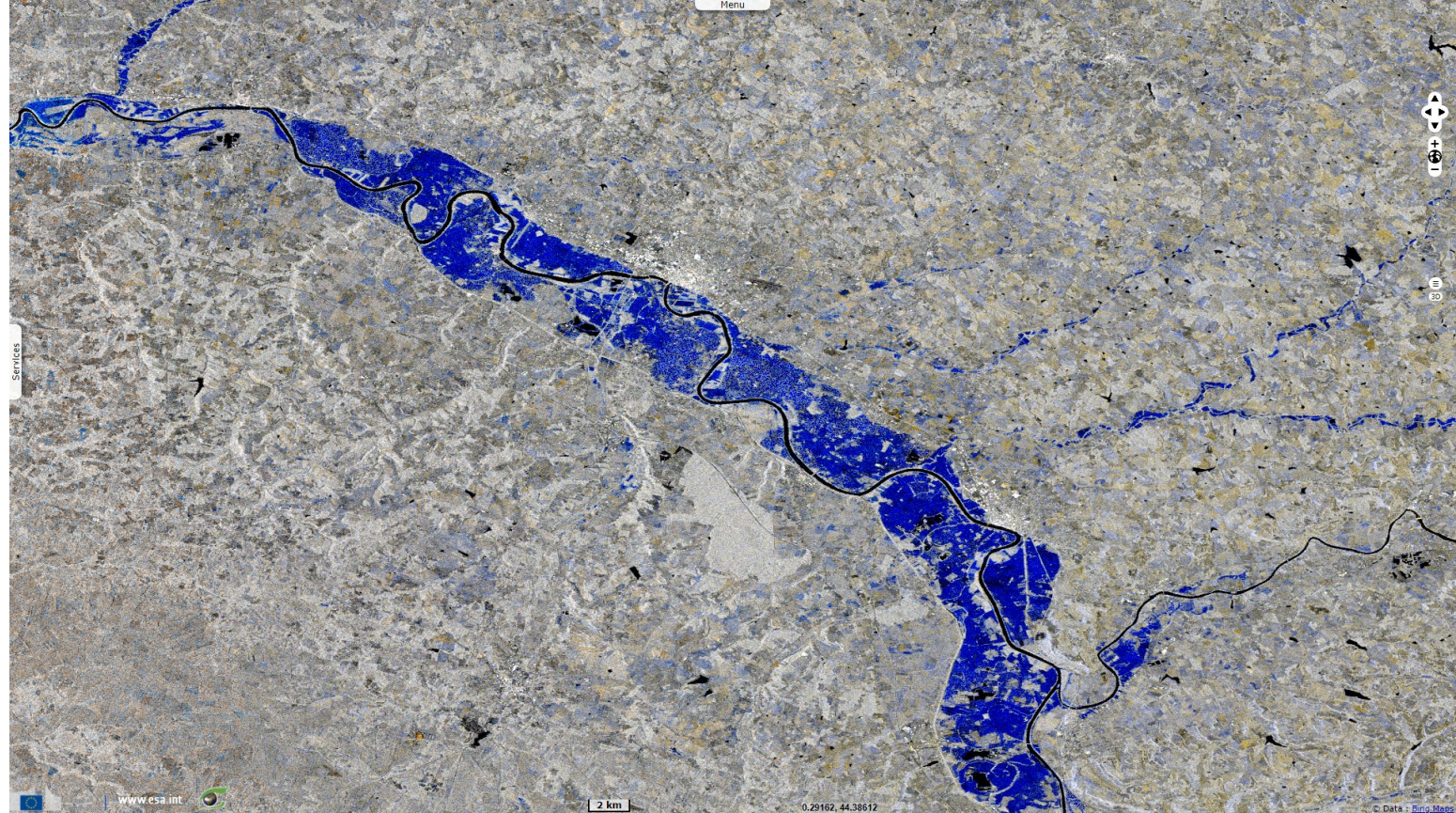
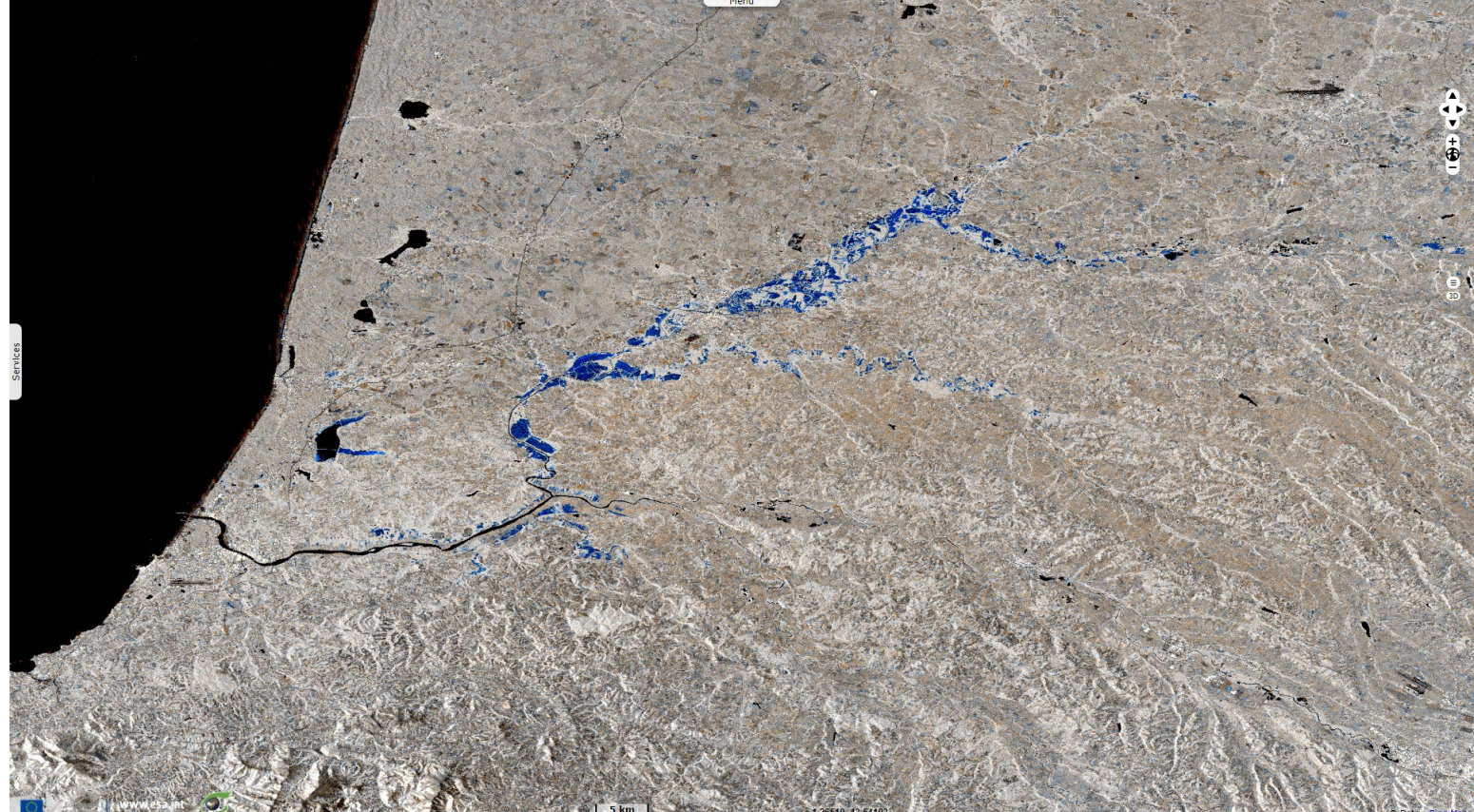














Fig. 6 - S1 (02 & 03.02.2021) - Fed by the generous precipitations of Atlantic Pyrenees, the Adour also flooded its banks. [2D view](#) [2D animation](#)



*The views expressed herein can in no way be taken to reflect the official opinion of the European Space Agency or the European Union.
Contains modified Copernicus Sentinel data 2021, processed by VisioTerra.*

More on European Commission space:							
More on ESA:				S-1 website	S-2 website	S-3 website	
More on Copernicus program:				SciHub portal	Cophub portal	Inthub portal	Colhub portal
More on VisioTerra:				Sentinel Vision Portal	Envisat+ERS portal	Swarm+GOCE portal	CryoSat portal