

Surf park in the semi arid San Joaquin Valley, USA

Sentinel-2 MSI acquired on **14 November 2015** at 18:50:02 UTC
Sentinel-2 MSI acquired on **04 September 2018** at 18:40:19 UTC
Sentinel-2 MSI acquired on **28 October 2020** at 18:45:11 UTC
Sentinel-1 CSAR IW acquired on **12 November 2020** at 01:59:09 UTC

Author(s): Sentinel Vision team, VisioTerra, France - svp@visioterra.fr

Keyword(s): Water security, food security, climate, desert, infrastructure, California, United States, USA

[2D Layerstack](#)

Fig. 1 - S1 (12.11.2020) - Kelly Slater, the famous surfer, has chosen Lemoore, 220km from the Pacific to locate the Kelly Wave Pool surf park [2D view](#)

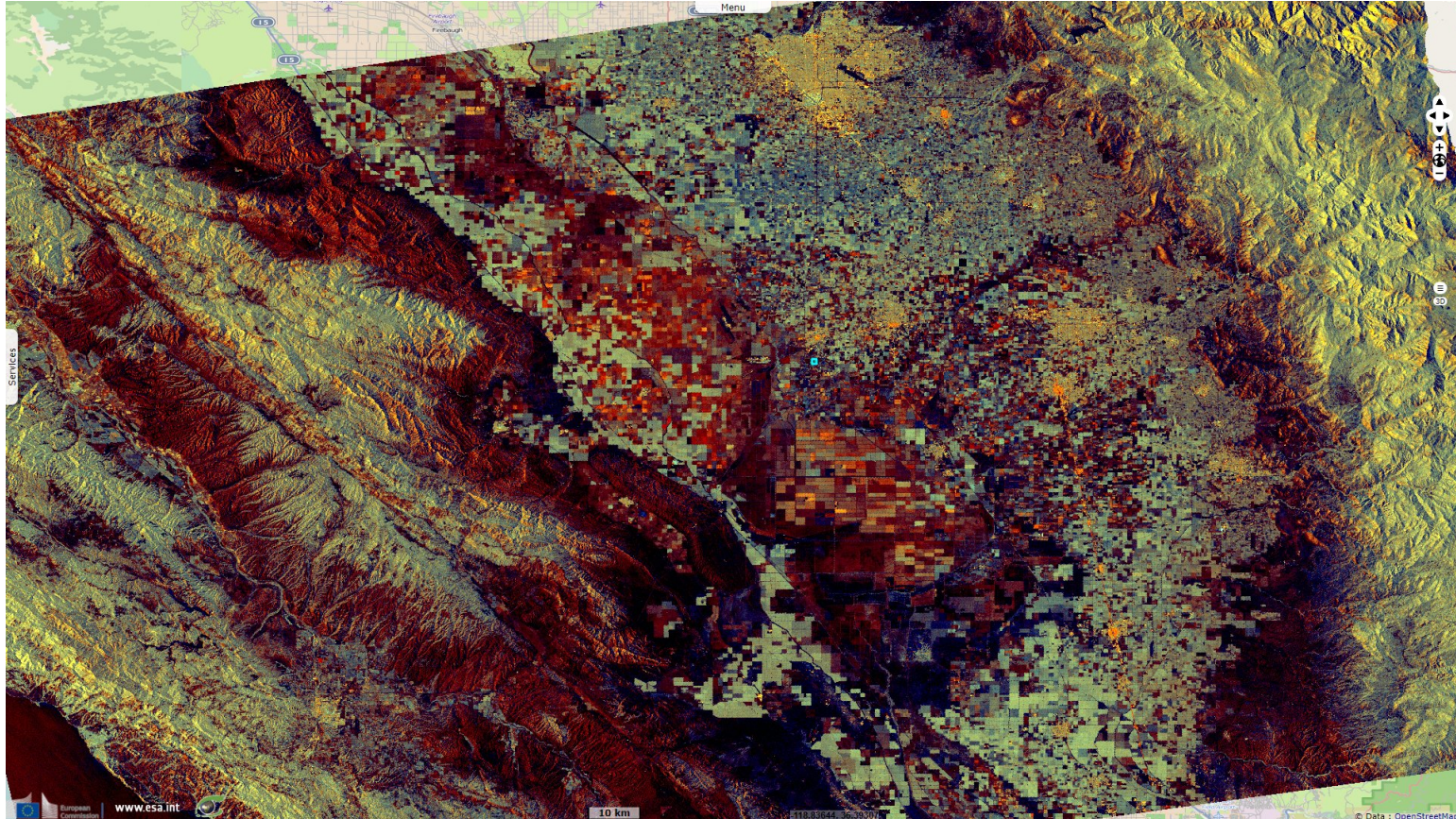


Fig. 2 - S2 (04.09.2018) - View during a round of the surf pro circuit in 2018 that used to be held at Lower Trestles on the Californian coast. [2D view](#)



Groundwater levels are reaching record lows in San Joaquin Valley due to increased pumping.

Fig. 3 - S2 (14.11.2015) - This pumping has caused as much as 20 cm land subsidence in a four-month period.

[2D view](#)

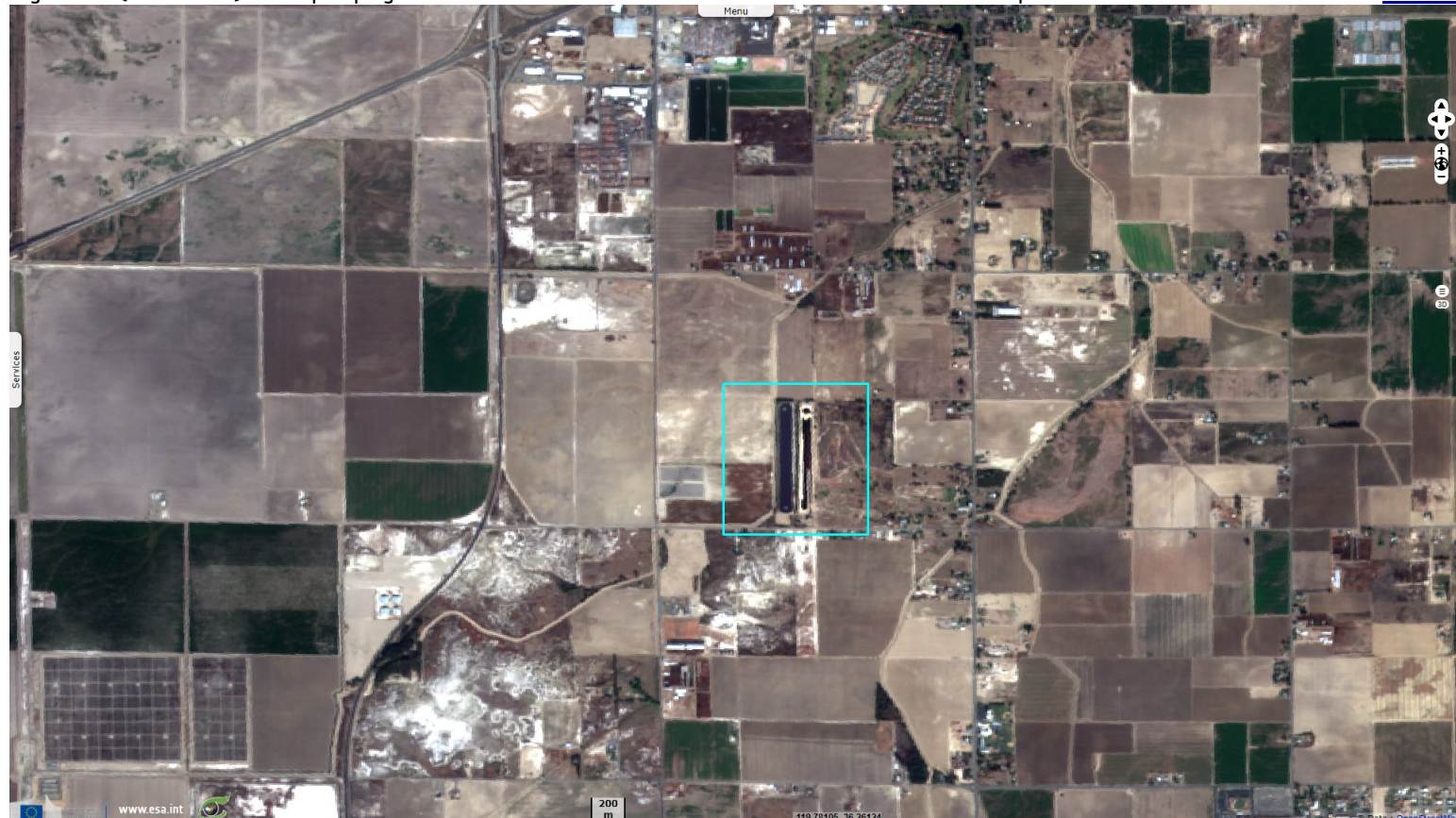


Fig. 4 - S2 (28.10.2020) - Despite its agricultural productivity, the San Joaquin Valley has the state's highest rate of food insecurity.

[2D view](#)



*The views expressed herein can in no way be taken to reflect the official opinion of the European Space Agency or the European Union.
Contains modified Copernicus Sentinel data 2020, processed by VisioTerra.*

More on European Commission space:						
More on ESA:				S-1 website	S-2 website	S-3 website
More on Copernicus program:				SciHub portal	Cophub portal	Inthub portal
More on VisioTerra:				Sentinel Vision Portal	Envisat+ERS portal	Swarm+GOCE portal
					CryoSat portal	