



[2D Layerstack](#)

Iron mines & steel plants near Nanfen district, China

Sentinel-2 MSI acquired on 29 April 2017 at 02:35:51 UTC
Sentinel-1 CSAR IW acquired on 01 April 2018 at 09:40:49 UTC

Author(s): Sentinel Vision team, VisioTerra, France - svp@visioterra.fr

Keyword(s): Land, natural resources, open pit mines, tailing dam, infrastructures, industry, railway, urban growth, China

Fig. 1 - S2 (29.04.2017) - 4,3,2 natural colour - A large open pit iron ore mine next to two tailing dams south of Benxi, in North-East China. [3D view](#)



Fig. 2 - 4,3,2 natural colour - SW of Benxi, several mines, a tailing dam and factories close to the railway infrastructures. [3D view](#)



Fig. 3 - 12,8,2 colour composite - Band 12 shows the chimney flare of Shandong Steel Benxi Plant & numerous factories near the railway [2D view](#)



Fig. 4 - 4,3,2 natural colour - Several iron mines & their reddish tailing dams surround Anshan, 80 km west of Benxi in Liaoyang suburb. [3D view](#)

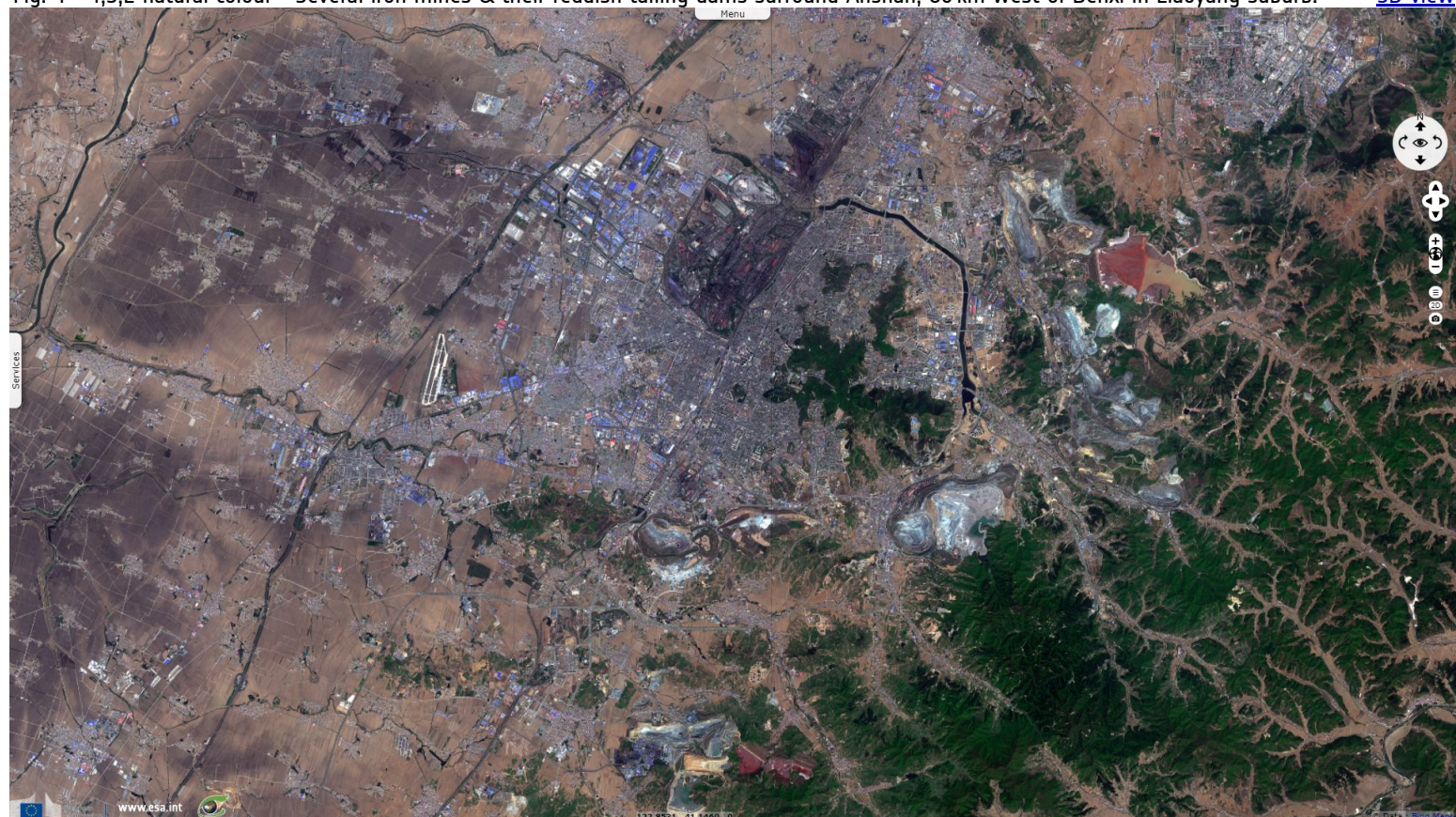


Fig. 5 - S1 (01.04.2018) - vv,vh,ndi - The mines, tailings dams as well as Anshan Iron & Steel Works all show on this radar images.

[3D view](#)

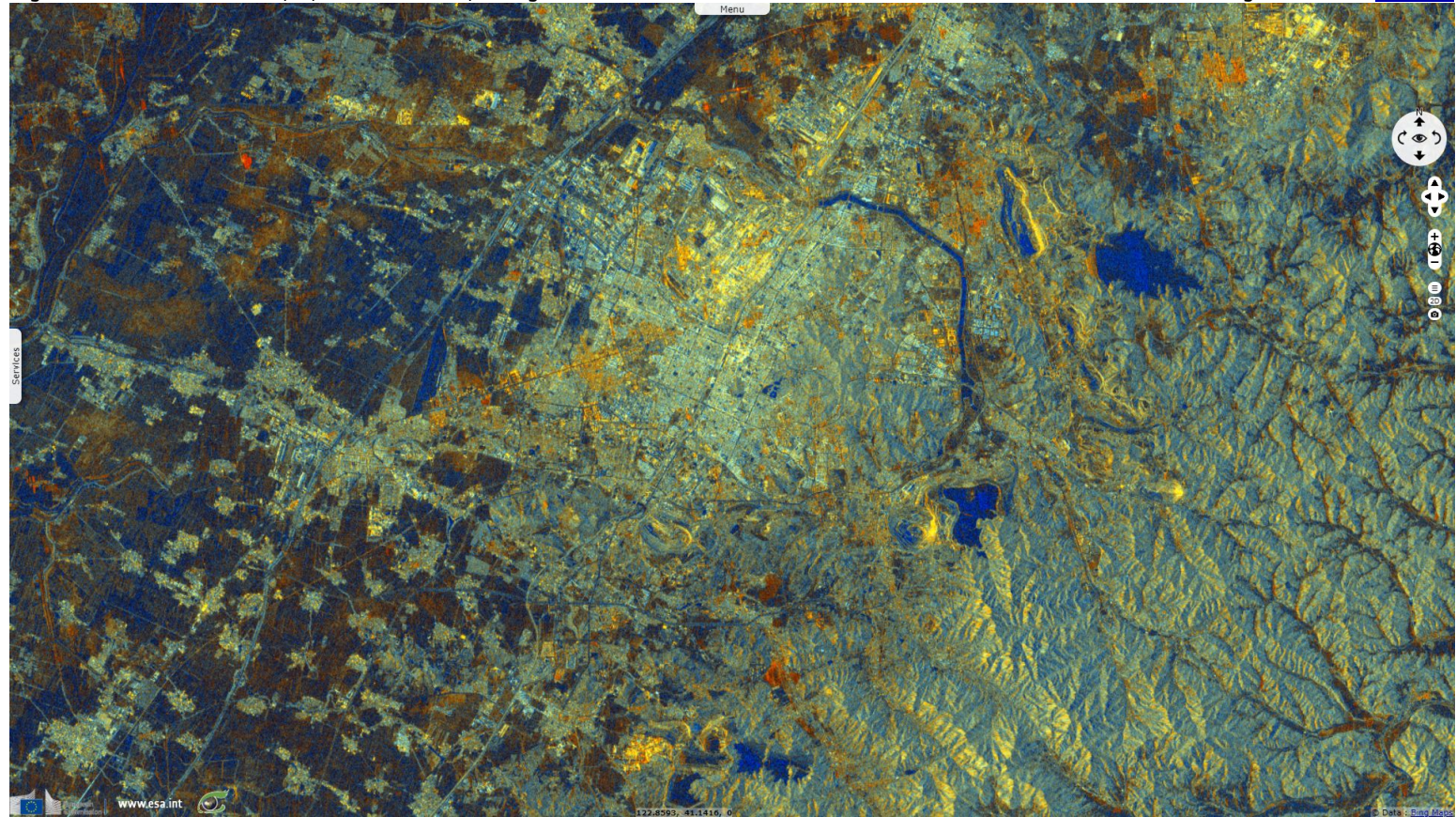
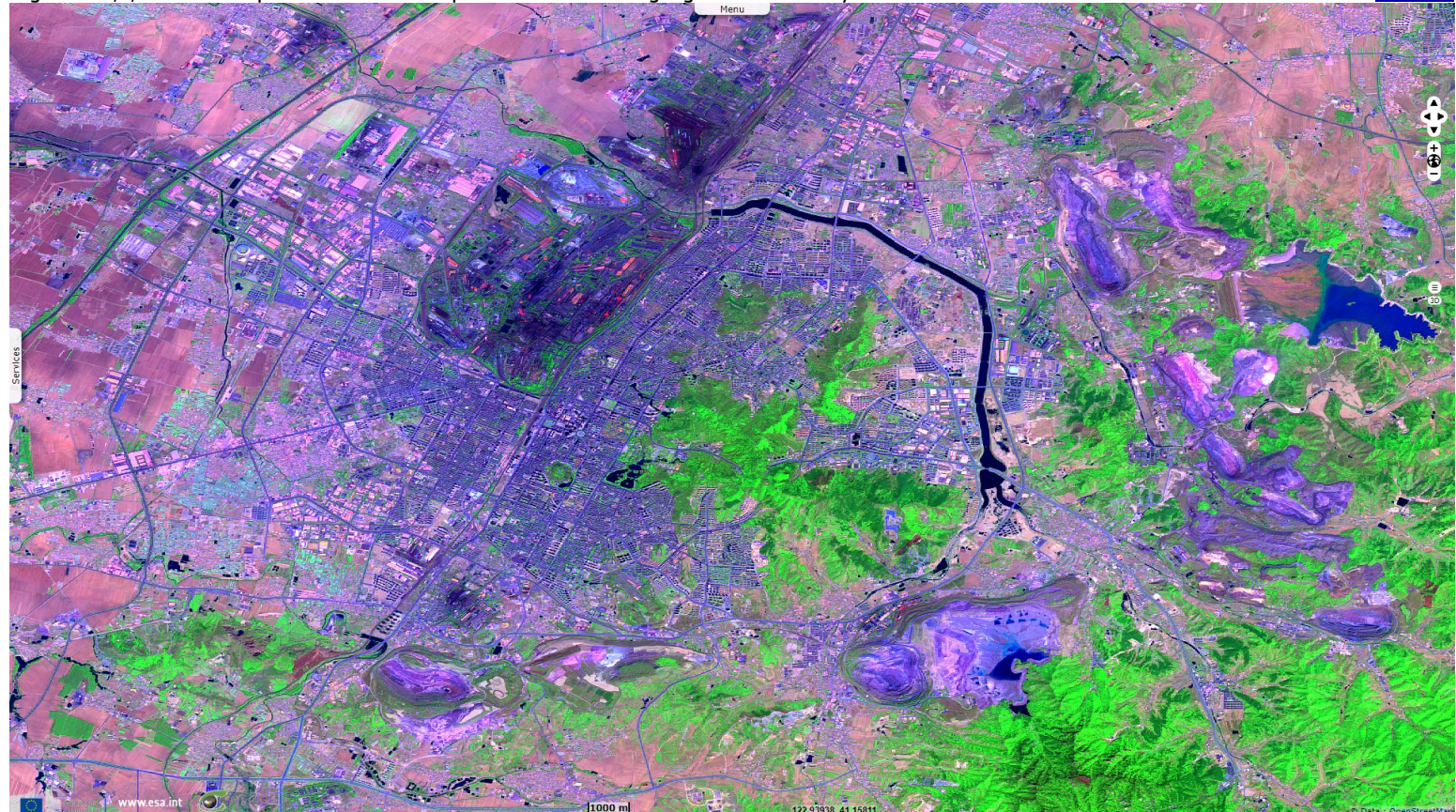


Fig. 6 - 12,8,2 colour composite - This close up view on Anshan highlights the diversity of the man-modified land use.

[2D view](#)



*The views expressed herein can in no way be taken to reflect the official opinion of the European Space Agency or the European Union.
Contains modified Copernicus Sentinel data 2019, processed by VisioTerra.*

More on European Commission space:						
More on ESA:				S-1 website	S-2 website	S-3 website
More on Copernicus program:				SciHub portal	Cophub portal	Inthub portal
More on VisioTerra:				Sentinel Vision Portal	Envisat+ERS portal	Swarm+GOCE portal
					CryoSat portal	