

# Sentinel-3A welcomes its younger twin

Sentinel-3 OLCI FR acquired on 25 April 2018 at 17:55:09 UTC  
Sentinel-3 SLSTR RBT acquired on 25 April 2018 at 17:55:17 UTC  
Sentinel-3 OLCI FR acquired on 25 April 2018 at 17:58:09 UTC  
Sentinel-3 SLSTR RBT acquired on 25 April 2018 at 17:58:17 UTC

Author(s): Sentinel Vision team, VisioTerra, France - [svp@visioterra.fr](mailto:svp@visioterra.fr)

Keyword(s): Coastal, polar, cryosphere, spring, snow, sea ice, Canada, Baffin Bay, Arctic



[2D Layerstack](#)

Fig. 1 - S3A SLSTR (25.04.2018) - The 25.04.2018 at 17:57 GMT, S3A was flying over Nunavut, Canada's northernmost region.

[2D view](#) [3D view](#)

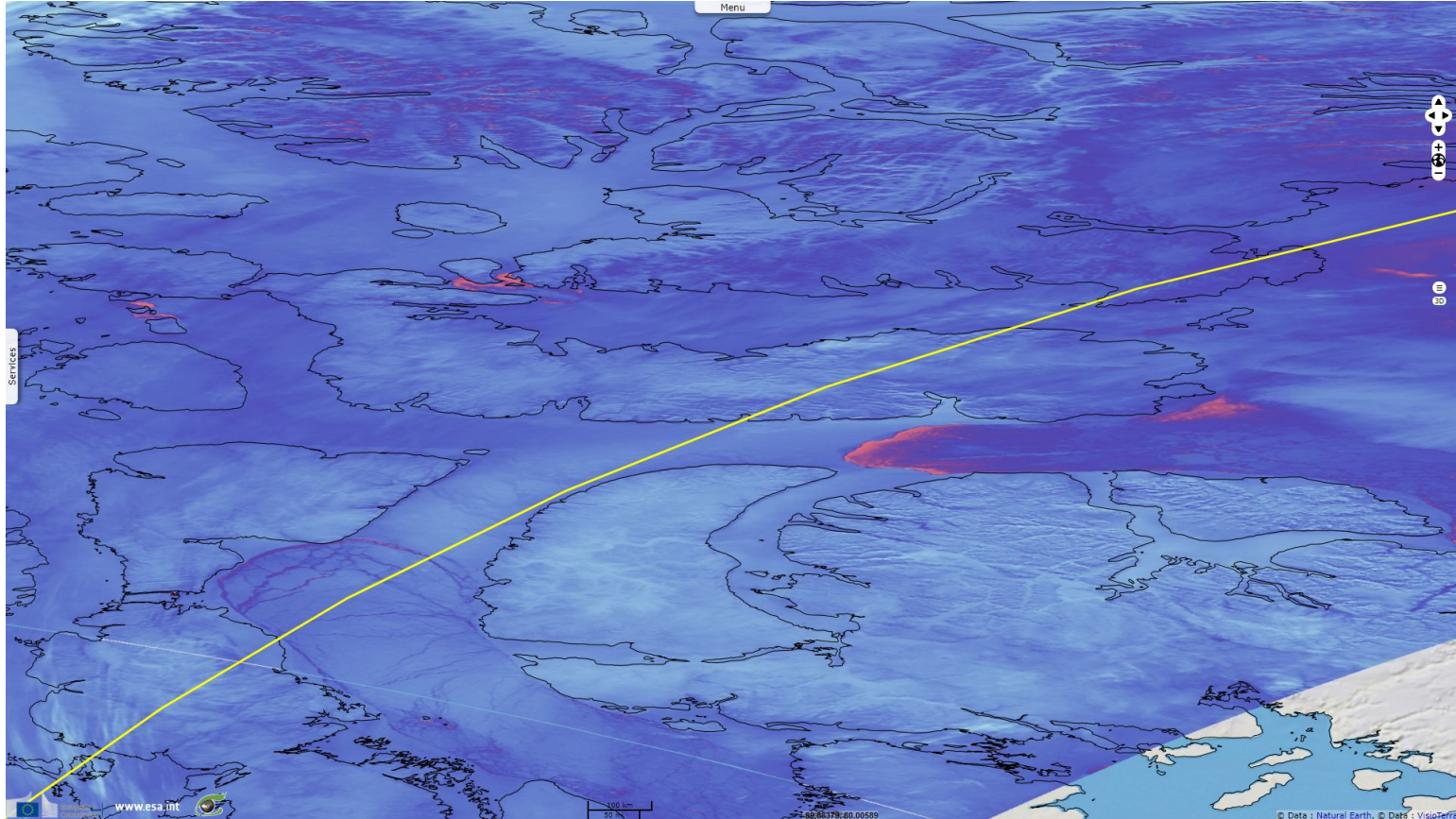


Image that was being acquired by Sentinel-3A as Sentinel-3B took off from Plesetsk. When S3B is operational, revisit time should drop to 1-2 days.

Fig. 2 - S3,S2,S1 colour composite - This view is centered on Lancaster Sound, located between Devon & Baffin islands.

[3D view](#) [2D view](#)

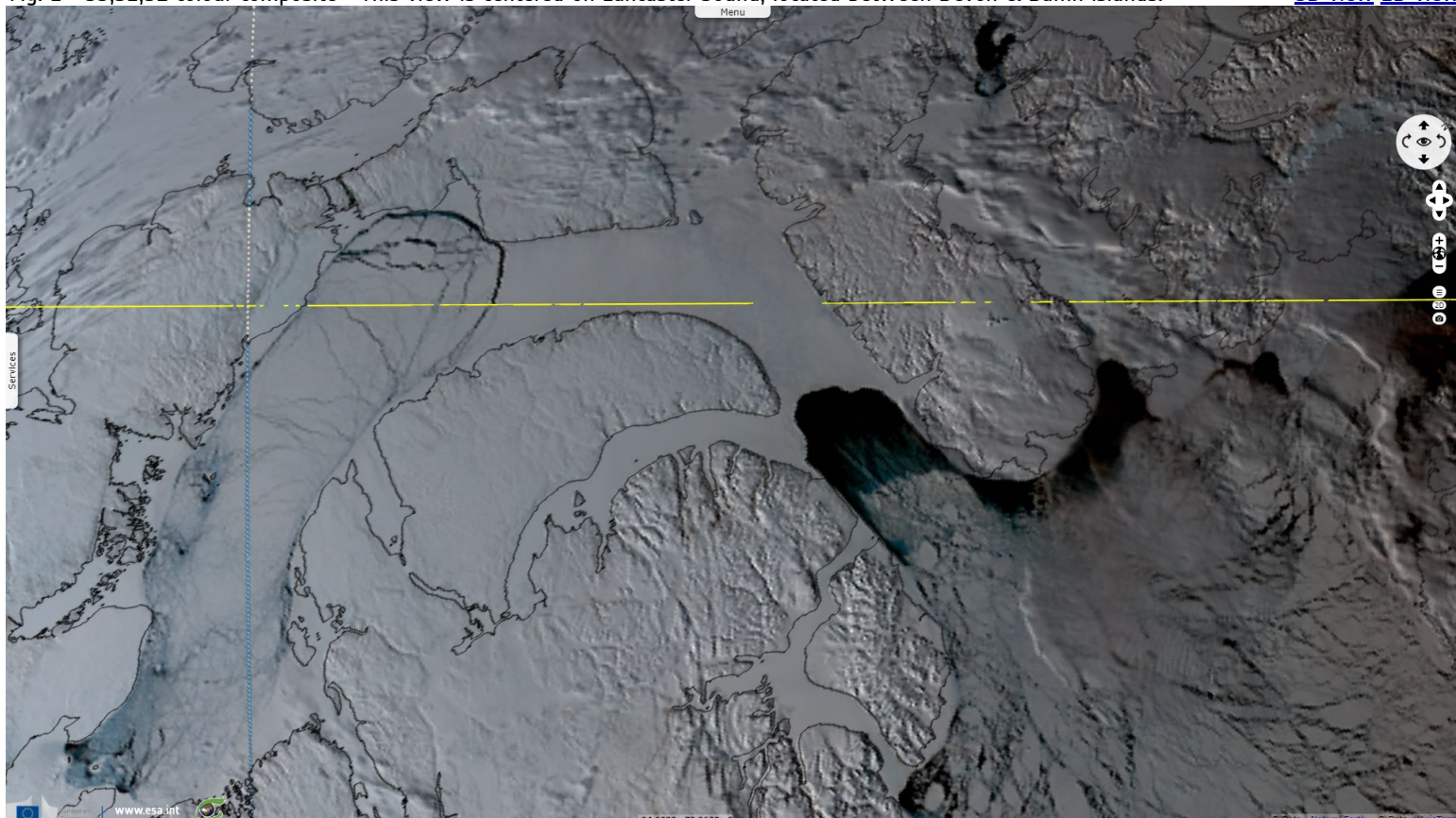




Fig. 3 - S6,S3,S1 colour composite - Lancaster Sound is the entrance from Baffin Bay to the Parry Channel & the Northwest Passage. [3D view](#) [2D view](#)

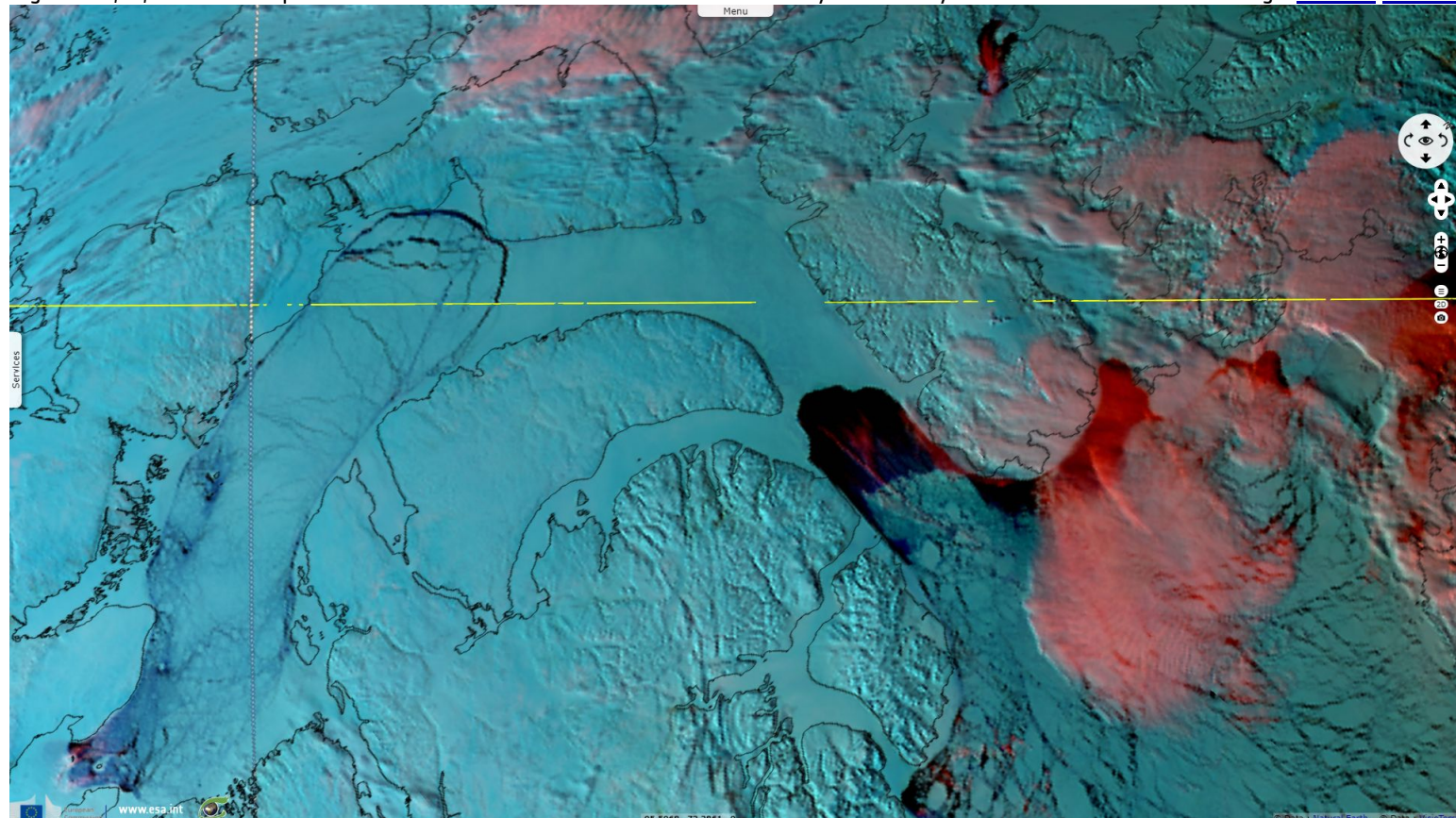
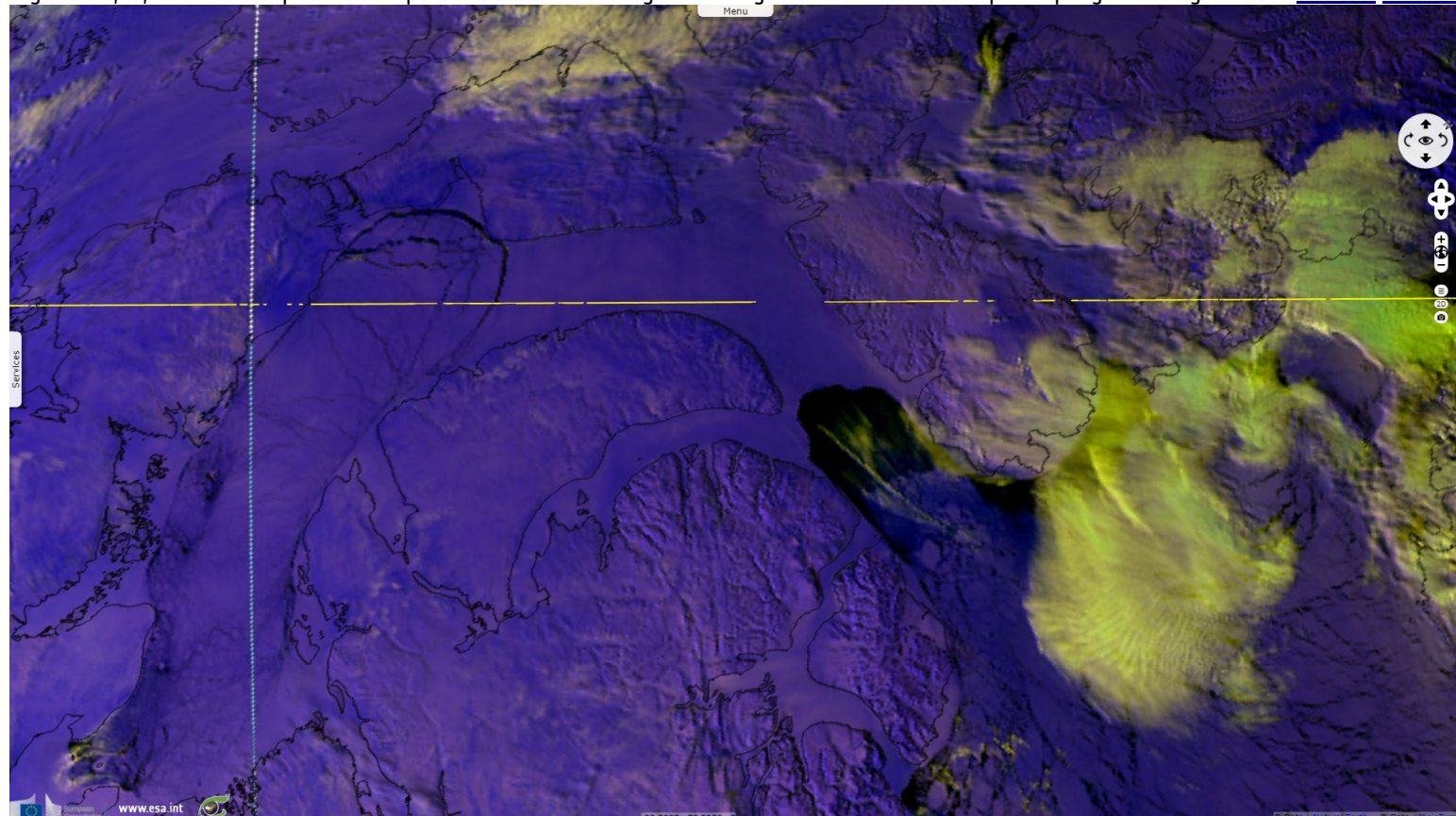














Fig. 4 - S6,S5,S2 colour composite - The pack ice is shown melting & breaking to the NW Atlantic as polar spring is coming. [3D view](#) [2D view](#)



*The views expressed herein can in no way be taken to reflect the official opinion of the European Space Agency or the European Union.*

More on European Commission space:								
More on ESA:				<a href="#">S-1 website</a>	<a href="#">S-2 website</a>	<a href="#">S-3 website</a>		
More on Copernicus program:				<a href="#">Scihub_portal</a>	<a href="#">Cophub_portal</a>	<a href="#">Inthub_portal</a>	<a href="#">Colhub_portal</a>	
More on VisioTerra:				<a href="#">Sentinel Vision Portal</a>	<a href="#">Envisat+ERS portal</a>	<a href="#">Swarm+GOCE portal</a>	<a href="#">CryoSat portal</a>	Proba-V portal