

# Volta River floods Ghana

Sentinel-1 CSAR IW acquired on 25 August 2018 from 18:18:07 to 18:18:32 UTC

Sentinel-1 CSAR IW acquired on 26 August 2018 from 18:10:42 to 18:11:07 UTC

...  
Sentinel-1 CSAR IW acquired on 12 September 2018 from 18:18:51 to 18:19:16 UTC

Sentinel-1 CSAR IW acquired on 13 September 2018 from 18:09:58 to 18:10:23 UTC

Author(s): Sentinel Vision team, VisioTerra, France - [svp@visioterra.fr](mailto:svp@visioterra.fr)

Keyword(s): Land, emergency, natural disaster, river, flooding, dam, rain, precipitation, monsoon, Ghana, Burkina Faso



[2D Layerstack](#)

Fig. 1 - S1 (25 & 26.08.2018) - vv,vh,vv colour composite - Between Bagre dam in Burkina Faso, [W Transborder Park](#) & [Volta lake](#). [2D view](#)

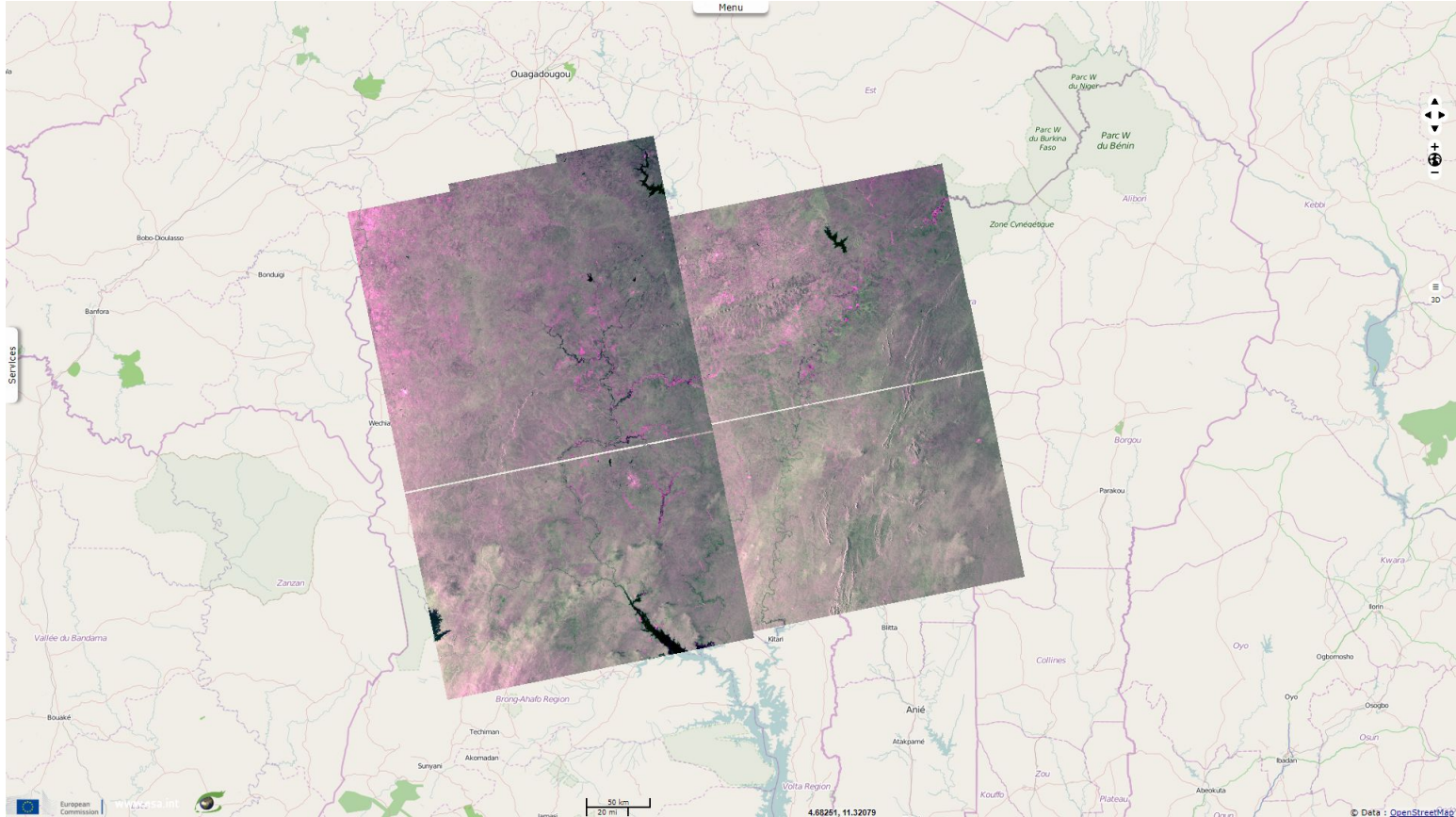


Fig. 2 - 31.08.2018 & 01.09.2018 - Excessive September rainfalls force a release in Bagre dam, causing flood on Nakanbé river (White Volta). [2D view](#)

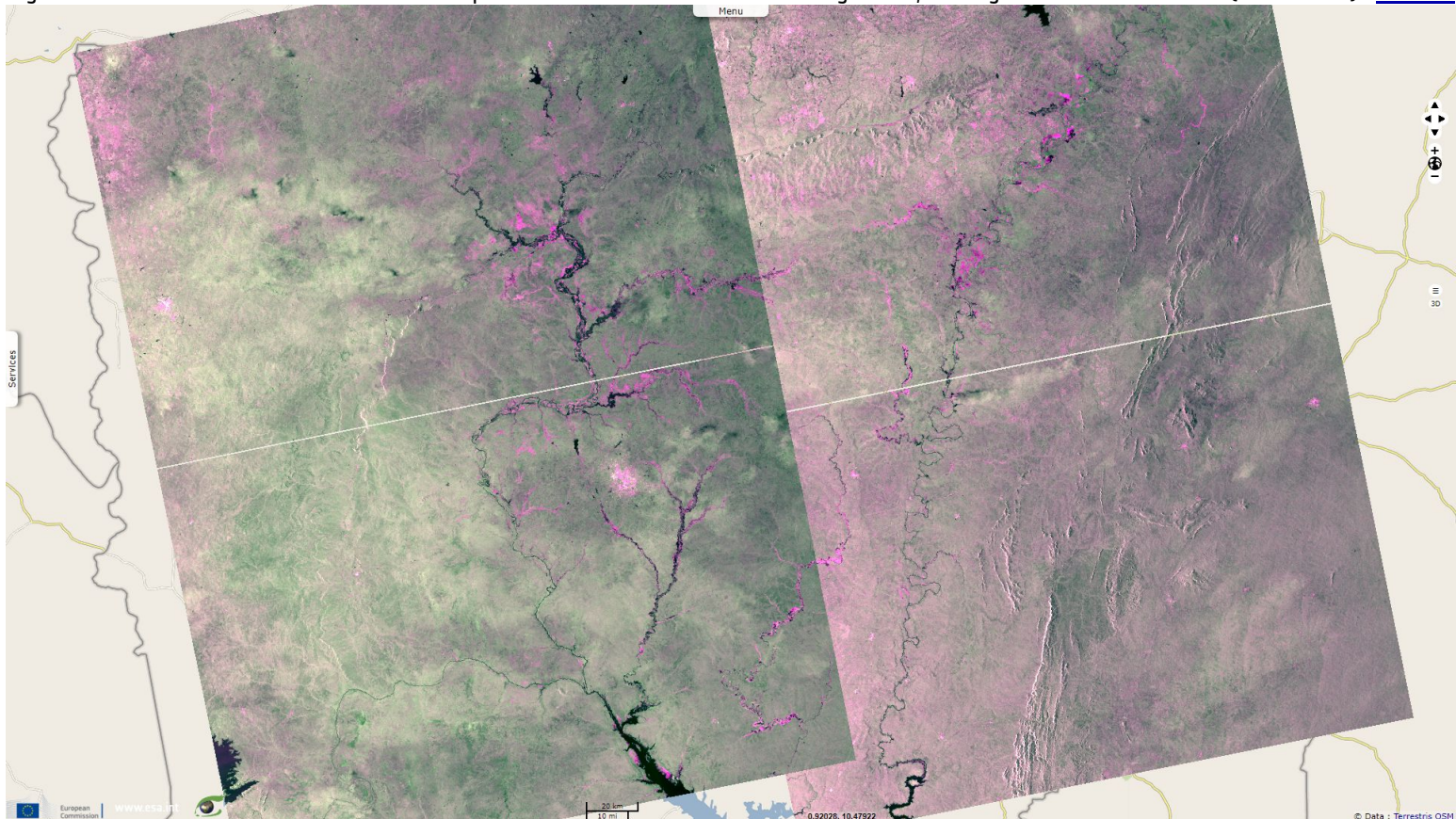


Fig. 3 - 06 & 07.09.2018 - Floods worsen, extend downstream and reach affluents such as Daka river (south, centre).

[2D view](#)

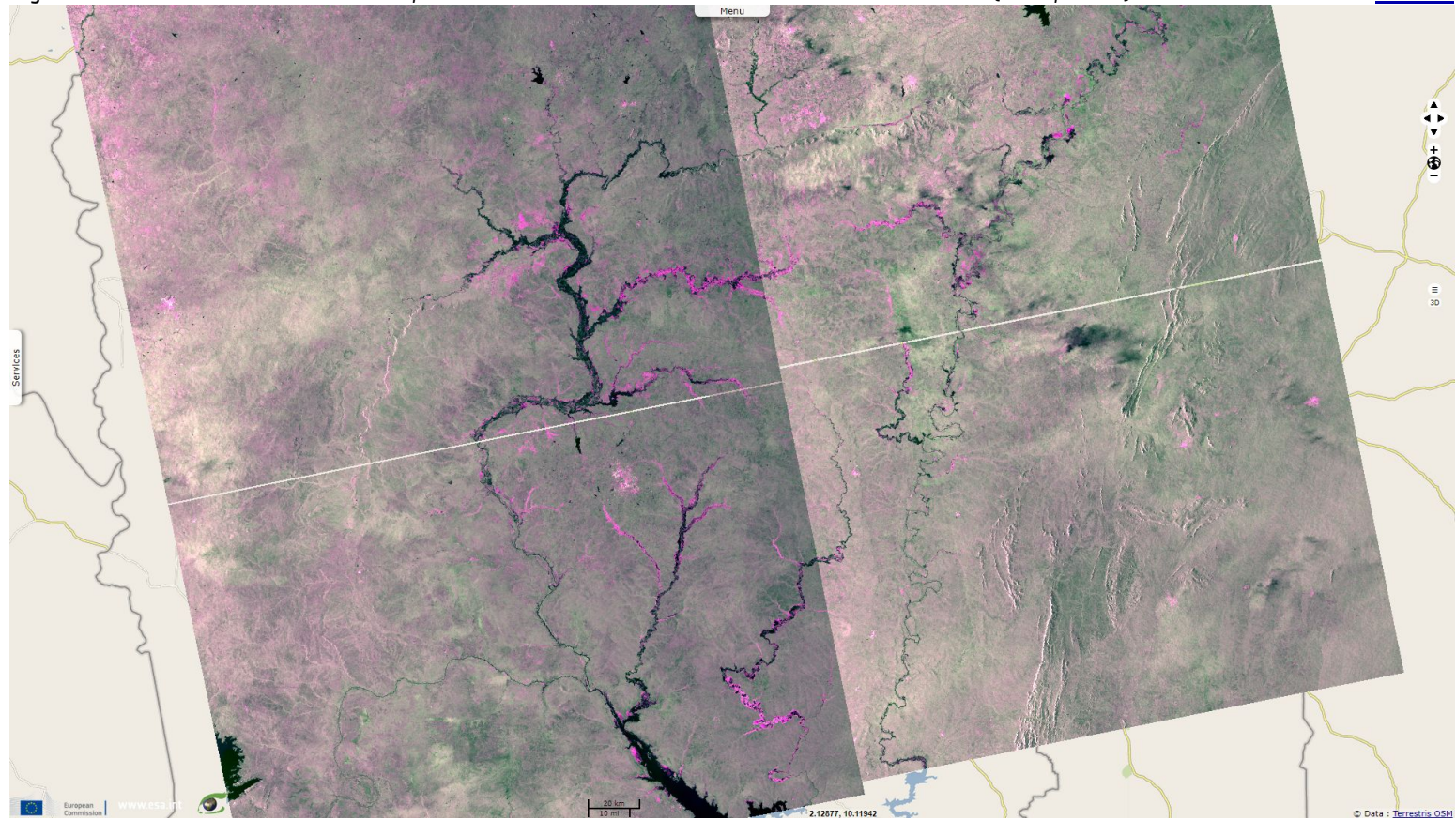
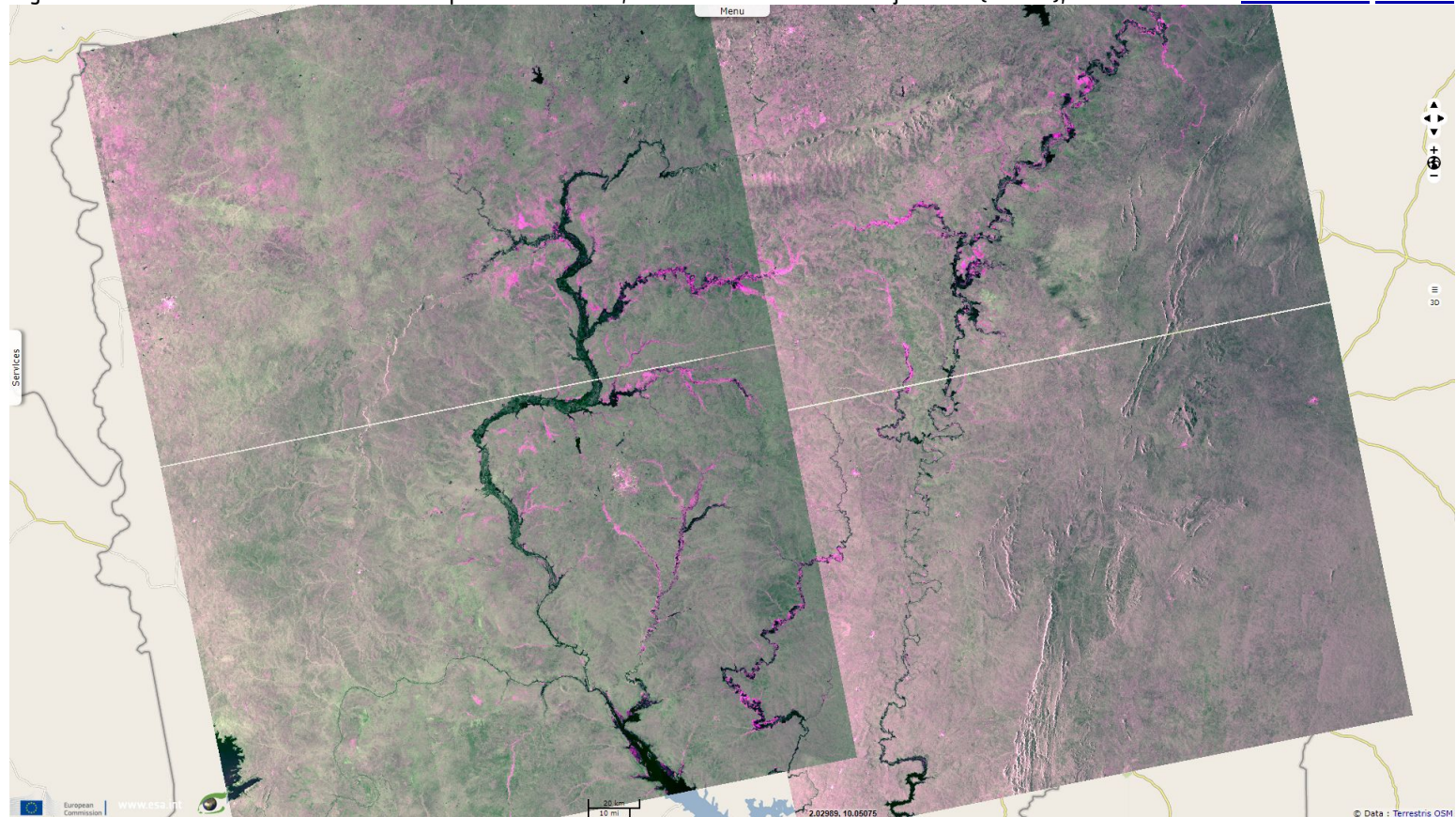


Fig. 4 - 12 & 13.09.2018 - Seasonal floods expand downstream; at east if now affects Pendjari river (aka Oti), a Ramsar site.

[2D animation](#) [2D view](#)



*The views expressed herein can in no way be taken to reflect the official opinion of the European Space Agency or the European Union.*

More on European Commission space:								
More on ESA:				<a href="#">S-1 website</a>	<a href="#">S-2 website</a>	<a href="#">S-3 website</a>		
More on Copernicus program:				<a href="#">SciHub portal</a>	<a href="#">Cophub portal</a>	<a href="#">Inthub portal</a>	<a href="#">Colhub portal</a>	
More on VisioTerra:				<a href="#">Sentinel Vision Portal</a>	<a href="#">Envisat+ERS portal</a>	<a href="#">Swarm+GOCE portal</a>	<a href="#">CryoSat portal</a>	Proba-V portal