

Sentinel-1 and -2 display Cameroon landscape diversity

Sentinel-2 MSI acquired on 29 December 2015 at 09:52:28 UTC

...

Sentinel-1 CSAR IW acquired on 27 March 2017 from 17:27:35 to 17:28:29 UTC

Sentinel-1 CSAR IW acquired on 17 October 2017 at 05:05:40 UTC

Author(s): Sentinel Vision team, VisioTerra, France - svp@visioterra.fr

Keyword(s): Land, coastal, hydrology, forestry, river network, lake, volcano, mangrove, Cameroon

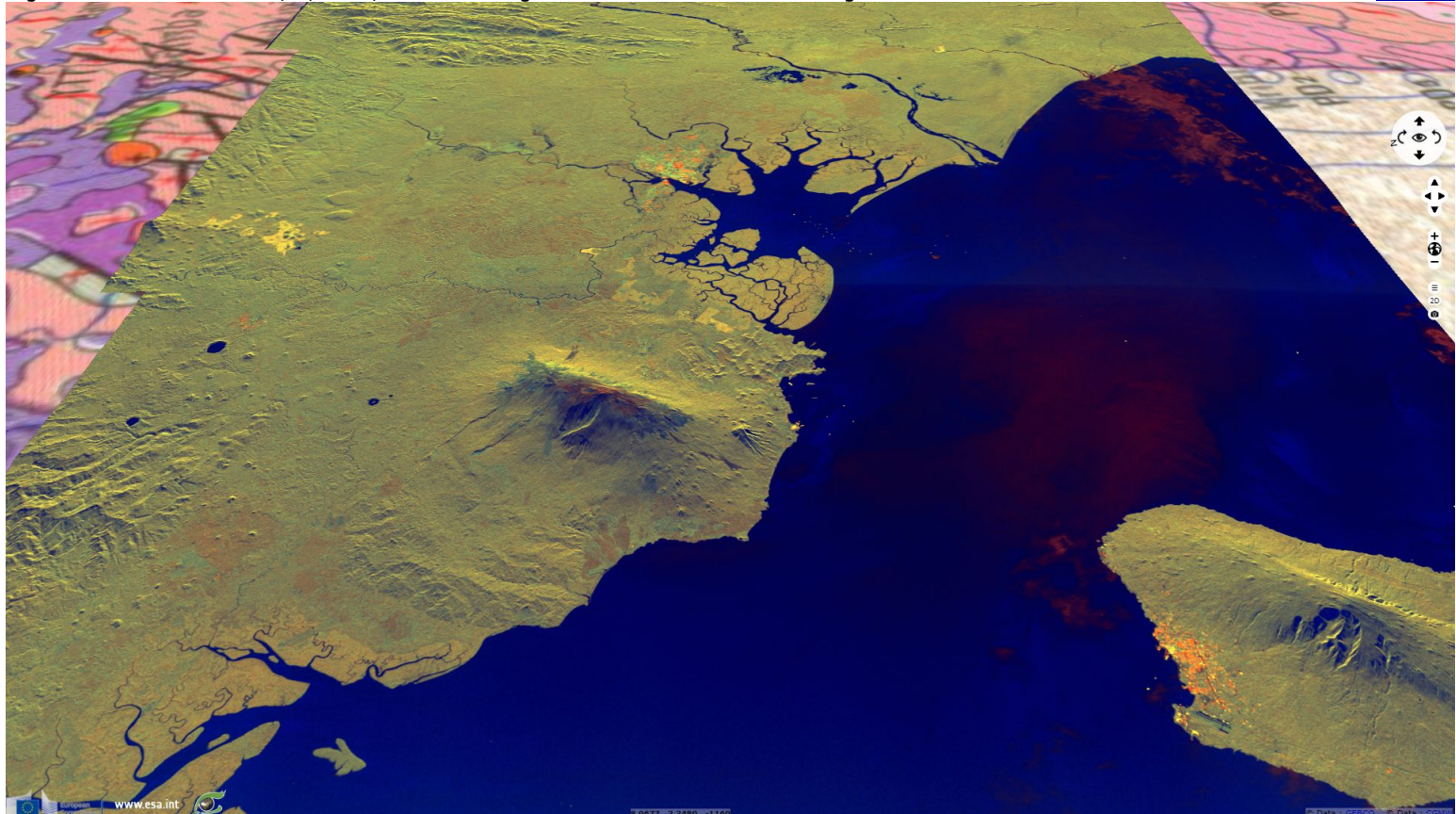


[2D Layerstack](#)

Fig. 1 - S2 (29.12.2015) - 11-8-2 composite - Mangrove in Wouri estuary near Douala (pink); further south east, Sanaga river & lake Ossa. [2D view](#)



Fig. 2 - S1 (17.10.2017) - vv,vh,ndi(vh,vv) - 4095m high mount Cameroon volcano is aligned with Bioko volcanic island & Oku volcanic field. [3D view](#)



Being far above the tree line, mount Cameroon bald as shown by its brown top versus its yellow forested basis on this radar composite.

Fig. 3 - S1 (2017-03-27) & S2A (2016.01.08, natural colour) - Center, Bankim reservoir; bottom left, Oku lake & volcanic field. [3D animation](#) [3D view](#)

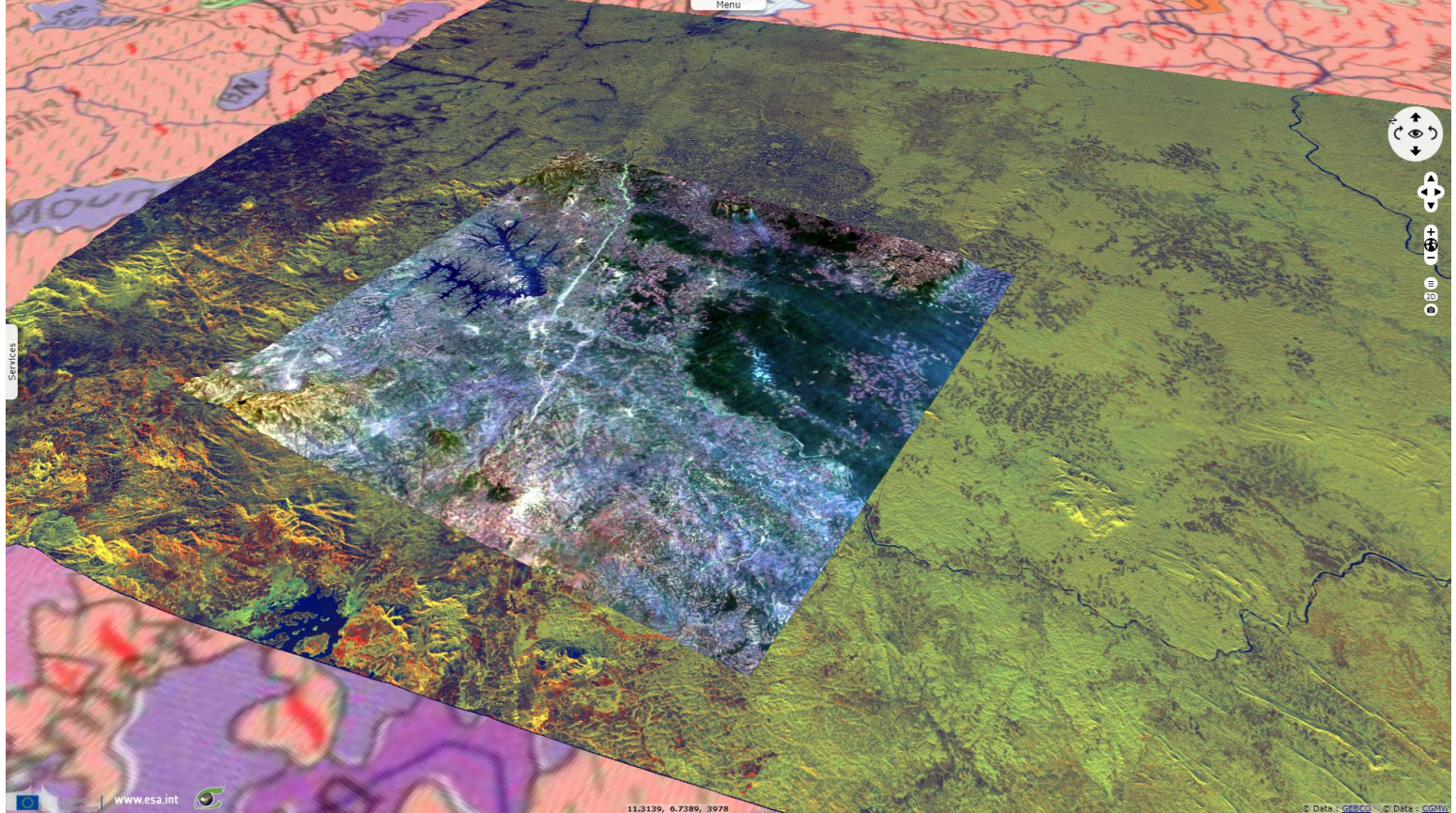
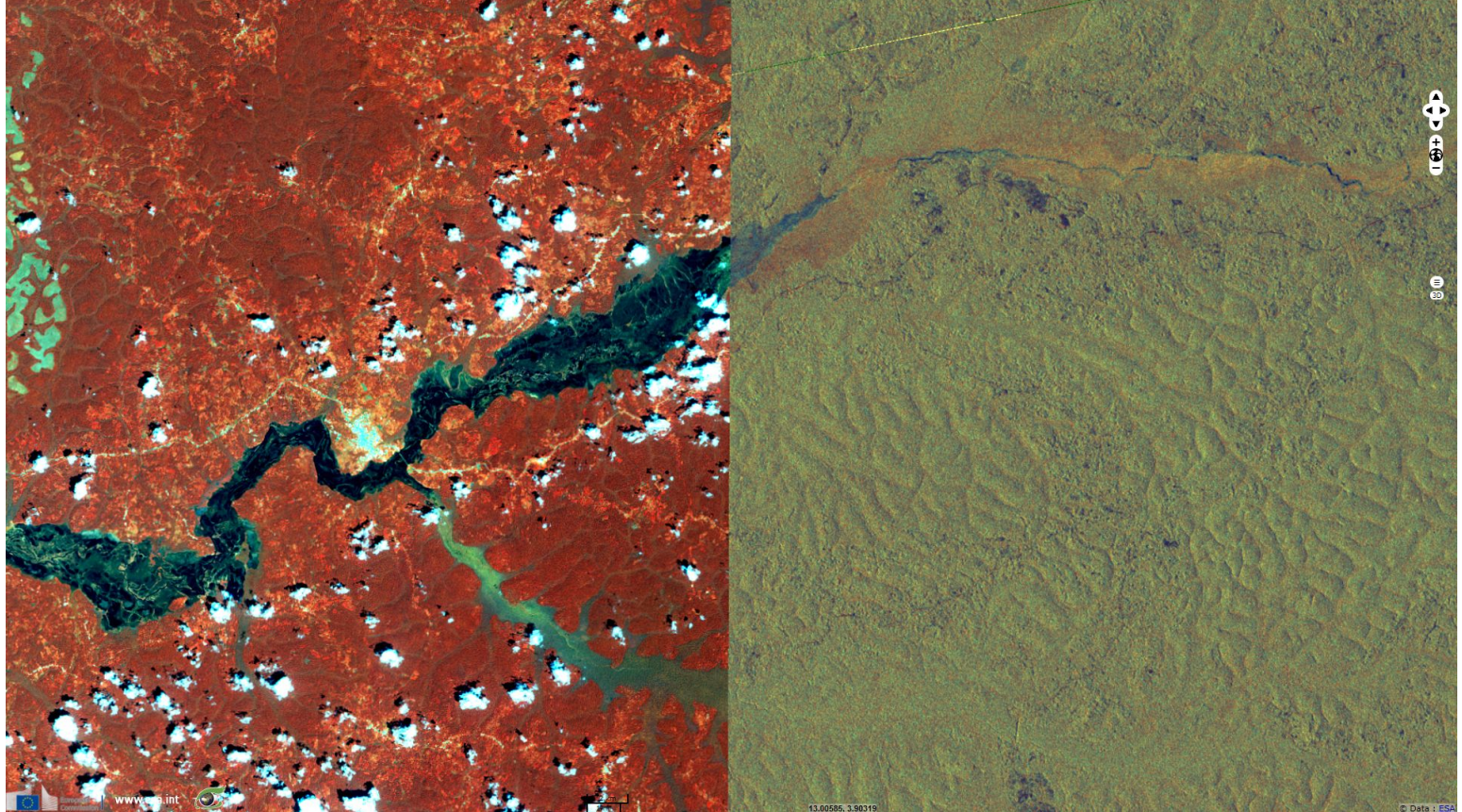


Fig. 4 - S1 (2017-03-27) & S2 (31.10.2016, 8,4,3 colour composite) - Nyong river dendritic network through equatorial forest. [2D animation](#) [2D view](#)



The views expressed herein can in no way be taken to reflect the official opinion of the European Space Agency or the European Union.

More on European Commission space:								
More on ESA:				S-1 website	S-2 website	S-3 website		
More on Copernicus program:				SciHub portal	Cophub portal	Inthub portal	Colhub portal	
More on VisioTerra:				Sentinel Vision Portal	Envisat+ERS portal	Swarm+GOCE portal	CryoSat portal	Proba-V portal