

Snowfalls in several regions of Austral Africa, RSA, Lesotho

Sentinel-3 OLCI FR, SLSTR LST & RBT acquired on 11 July 2023 from 07:42:04 to 07:45:04 UTC

Author(s): Sentinel Vision team, VisioTerra, France - svp@visioterra.fr

Keyword(s): Weather, precipitations, snowfall, plateau, mountains, RSA, South Africa, Lesotho



[2D Layerstack](#)

Fig. 1 - S3 SLSTR (11.07.2023) - It snowed in Johannesburg, Republic of South Africa, for the first time since 2012.

[3D view](#)

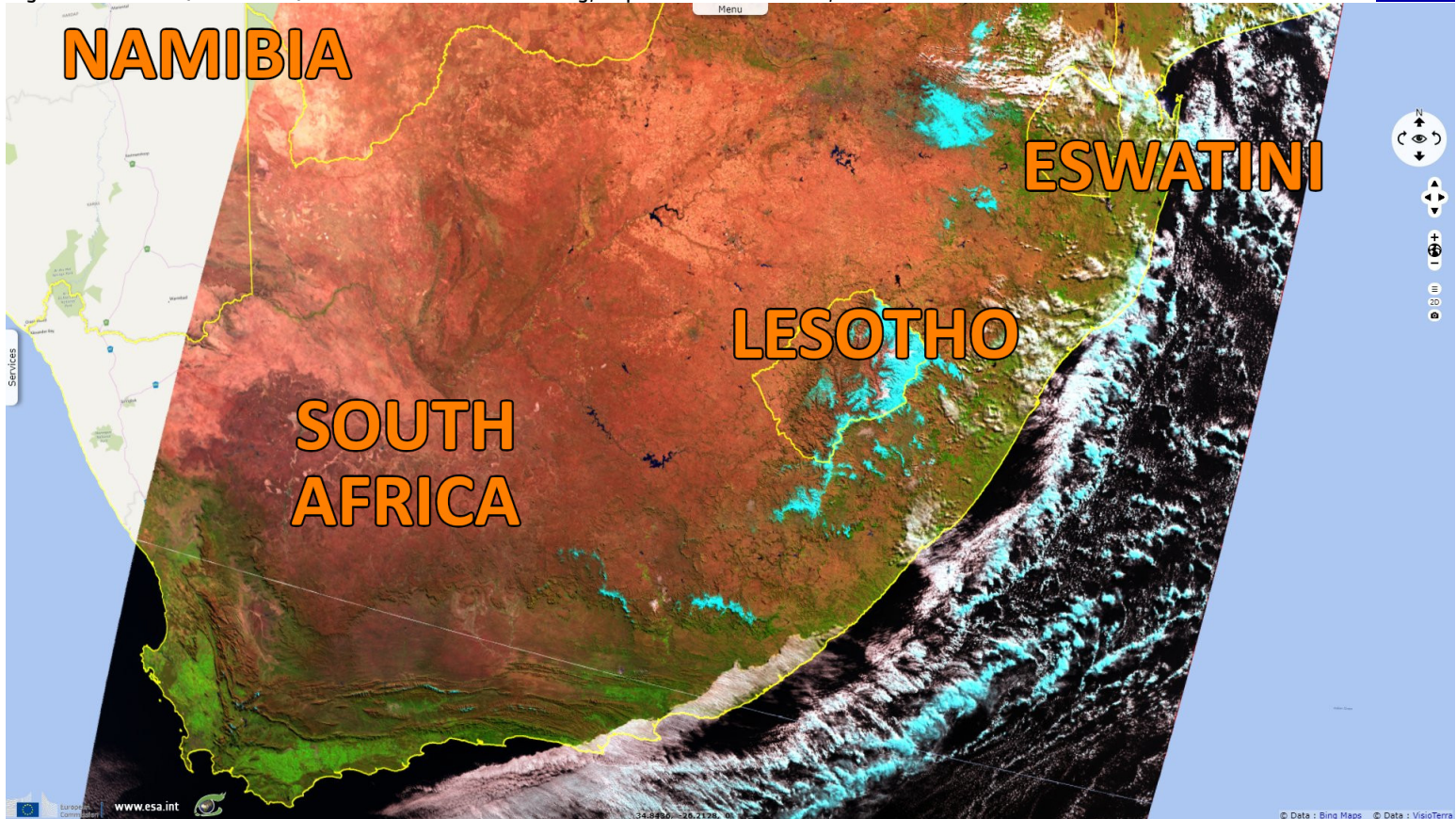


Fig. 2 - S3 SLSTR (11.07.2023) - This is a once-in-a-decade event for this city located on the South-African Plateau.

[3D view](#)

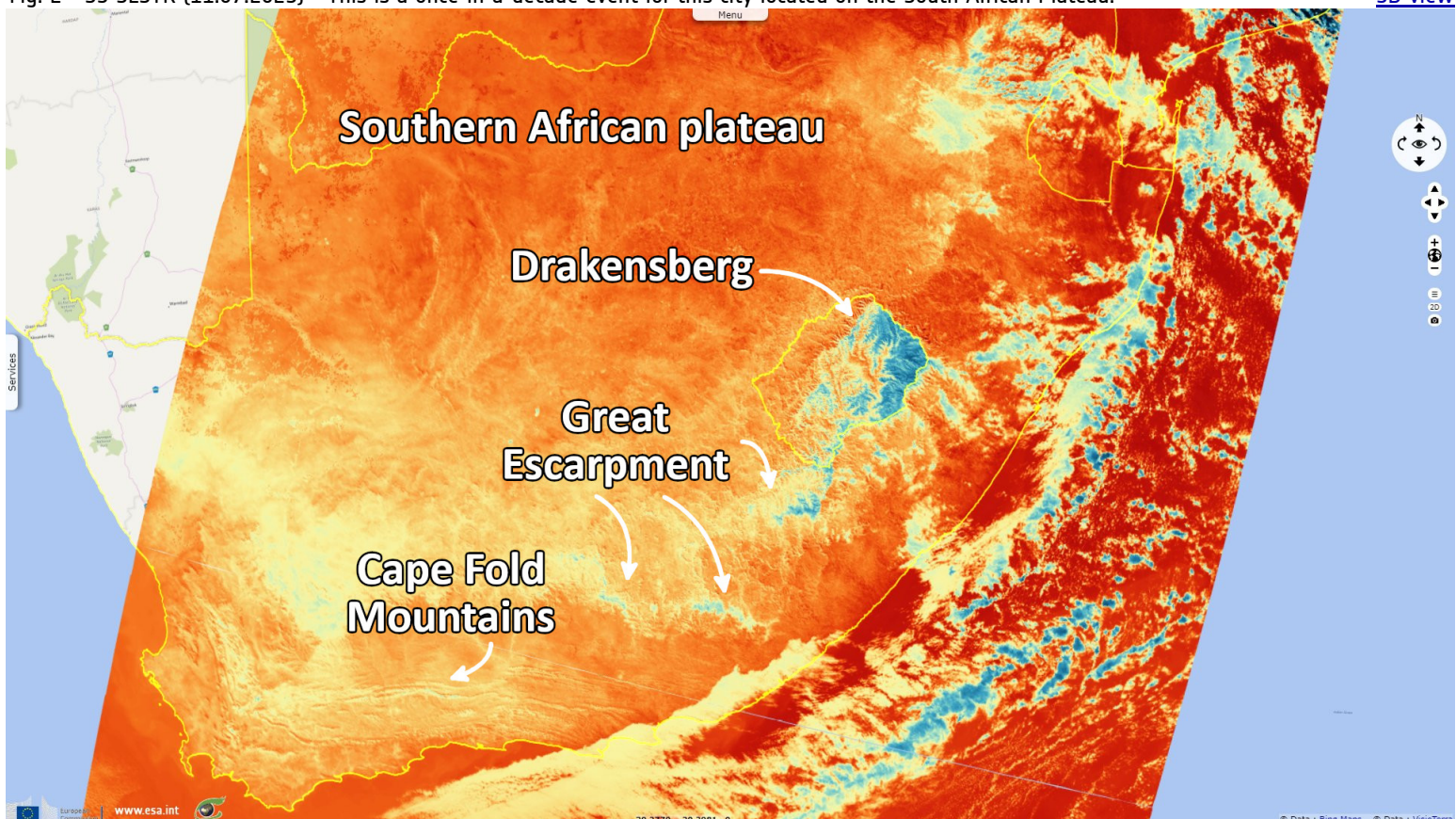
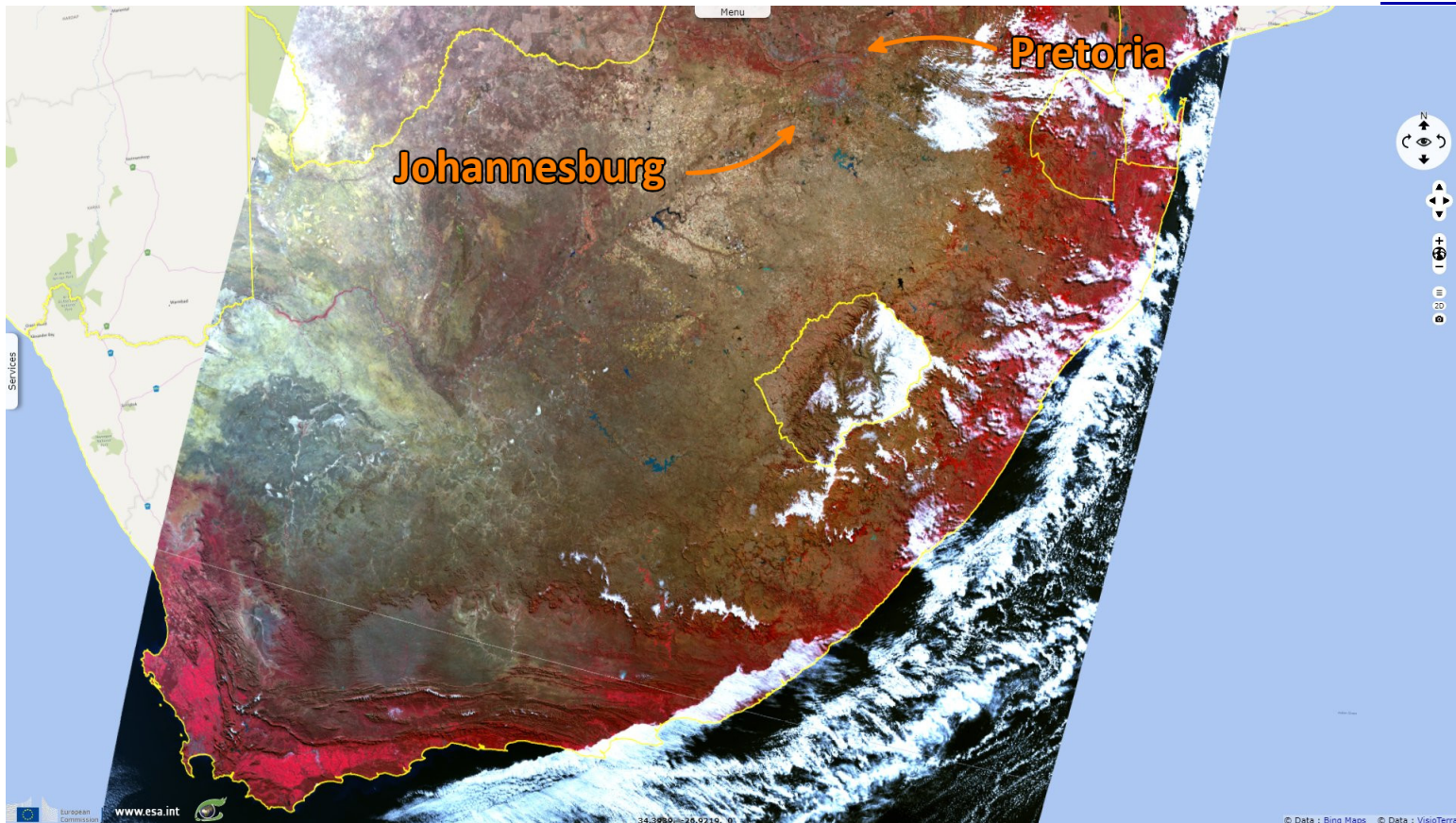


Fig. 3 - S3 OLCI (11.07.2023) - The snow melted quickly in this city but lasted longer on proper mountainous features at south and east of the plateau.

[3D view](#)



*The views expressed herein can in no way be taken to reflect the official opinion of the European Space Agency or the European Union.
Contains modified Copernicus Sentinel data 2023, processed by VisioTerra.*

More on European Commission space:							
More on ESA:				S-1 website	S-2 website	S-3 website	
More on Copernicus program:				SciHub portal	Cophub portal	Inthub portal	Colhub portal
More on VisioTerra:				Sentinel Vision Portal	Envisat+ERS portal	Swarm+GOCE portal	CryoSat portal



Funded by the EU and ESA

SED-1321-SentinelVision

