

Islamabad, a new city built to be Pakistan's capital

Sentinel-1 CSAR IW acquired on 29 February 2016 from 01:06:37 to 01:07:02 UTC

Sentinel-2 MSI acquired on 18 September 2017 at 05:46:29 UTC

Sentinel-2 MSI acquired on 21 April 2018 at 05:46:41 UTC

Sentinel-2 MSI acquired on 21 May 2018 at 05:46:41 UTC

Author(s): Sentinel Vision team, VisioTerra, France - svp@visioterra.fr

Keyword(s): Urban growth, infrastructure, Pakistan



[2D Layerstack](#)

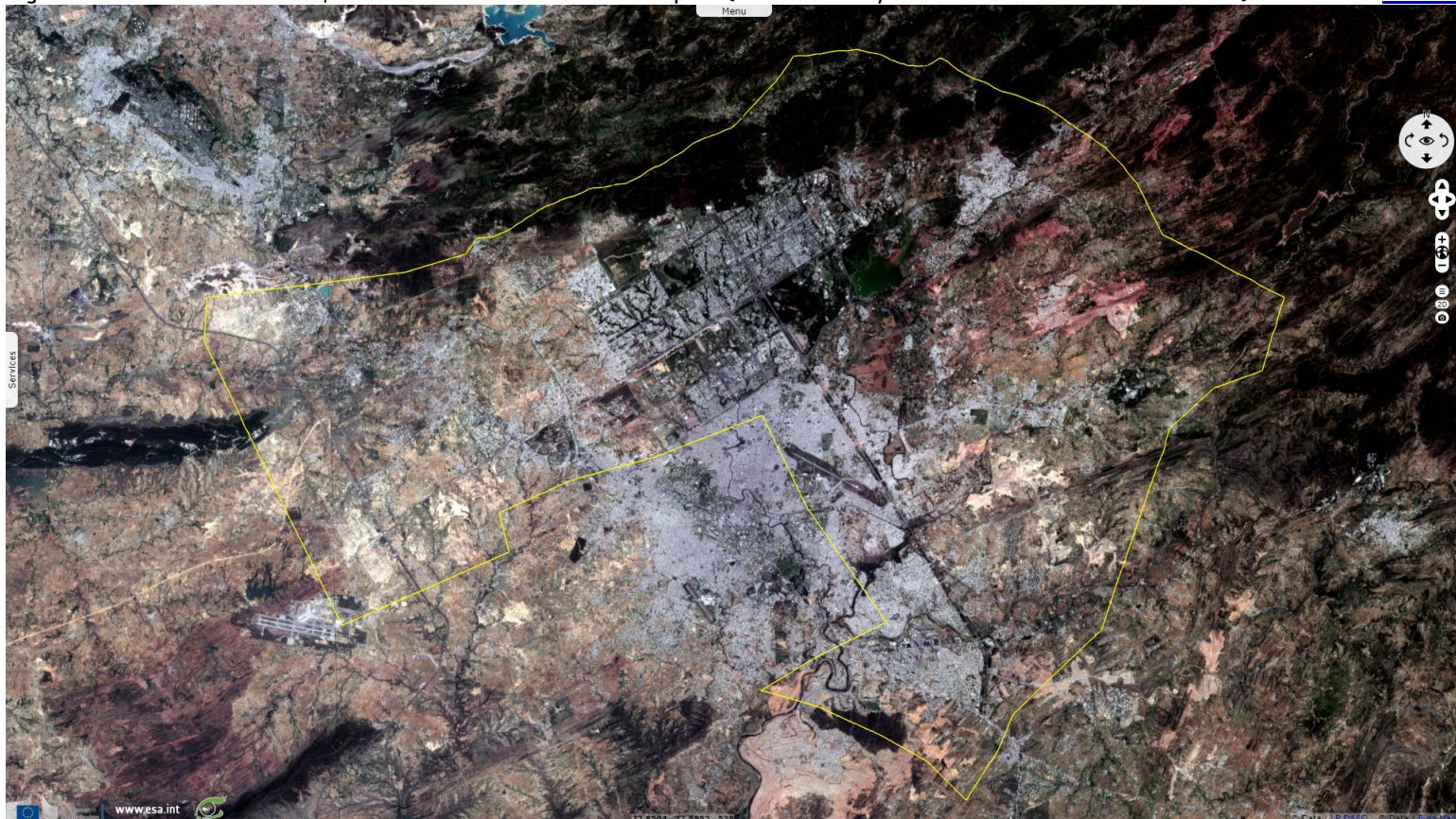
Fig. 1 - S2 (21.04.2018) - 4,3,2 - After its independence in 1947, Pakistan chose Karachi as capital but switched to Islamabad in 1967.

[2D view](#)



Fig. 2 - 21.05.2018 - To this end, Islamabad was built around Rawalpindi (next to Himalayan foothills & near the Indian border) from 1961.

[3D view](#)



Its population rose from nul to 200000 in 1981, 500 000 in 1998, 1 000 000 in 2017; the larger Islamabad-Rawalpindi area exceeds 4 000 000.

Fig. 3 - 18.09.2017 - A cosmopolitan and urbanised city, it is labelled as very high on the Human Development Index with 0.875

[3D view](#)

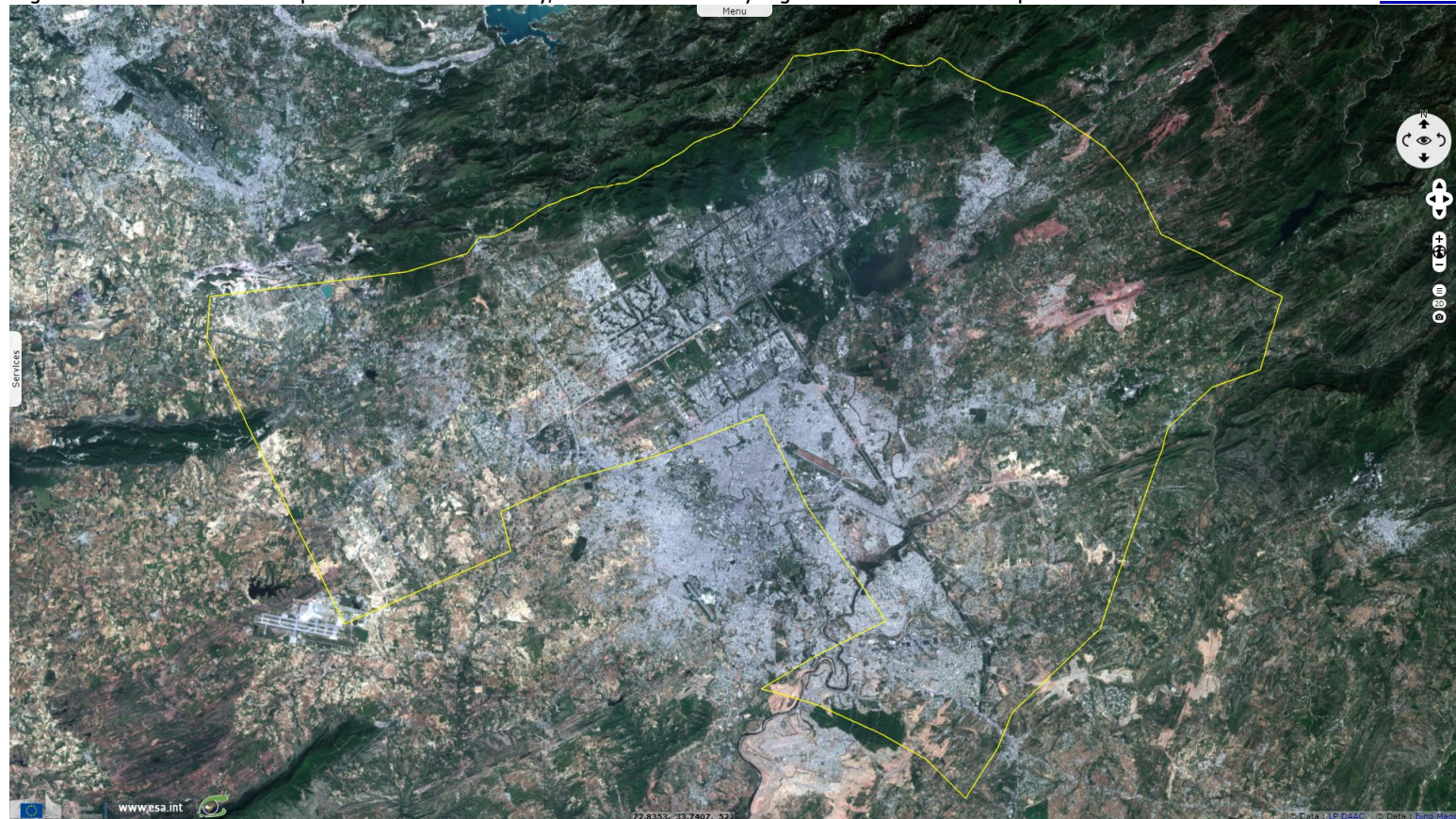


Fig. 4 - S1 (29.02.2016) - vv,vh,vv composite - Its zone I consists mainly of all the developed residential sectors, each covers 2 km × 2 km.

[3D view](#)



*The views expressed herein can in no way be taken to reflect the official opinion of the European Space Agency or the European Union.
Contains modified Copernicus Sentinel data 2019, processed by VisioTerra.*

More on European Commission space:						
More on ESA:				S-1 website	S-2 website	S-3 website
More on Copernicus program:				SciHub portal	Cophub portal	Inthub portal
More on VisioTerra:				Sentinel Vision Portal	Envisat+ERS portal	Swarm+GOCE portal
					CryoSat portal	