

Smart agriculture and environment in Rwanda

Sentinel-2 MSI acquired on 02 July 2016 at 08:25:22 UTC

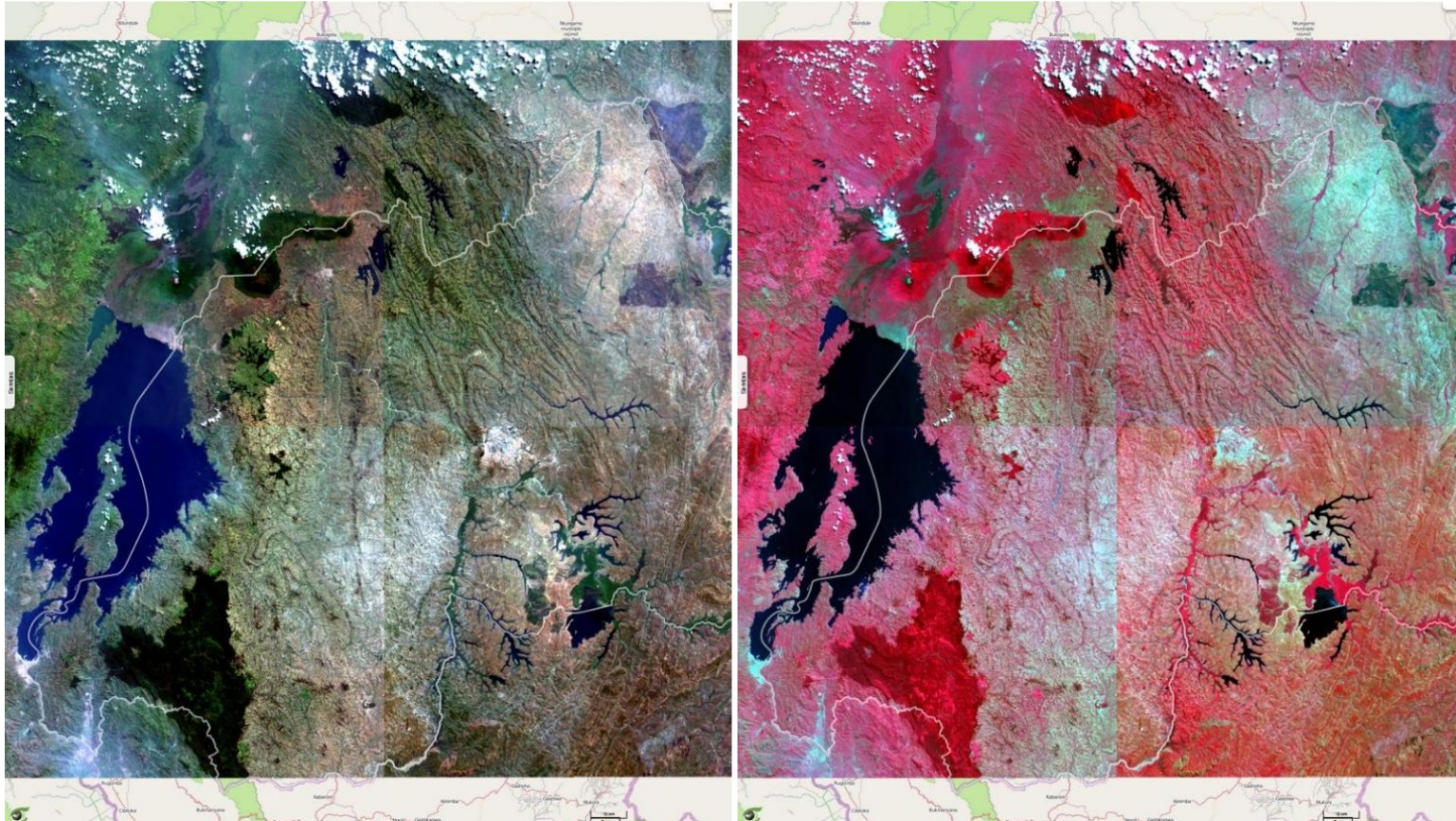
Author(s): Sentinel Vision team, VisioTerra, France - svp@visioterra.fr

Keyword(s): Environment, biodiversity, Rugezi marsh, Kivu Lake, wetland, vegetation, agriculture, Ramsar, volcano, land, Rwanda

[2D Layerstack](#)

Fig. 1 - 4-3-2 Natural colours composite (left) and 8-4-3 Vegetation composite (right).

[2D view](#) [2D view](#)



According to Paul Ouedraogo, Senior Advisor for Africa, Ramsar Convention Secretariat, "In 2012 Rwanda Environmental Management Authority (REMA) made a rapid inventory of Kivu islands biodiversity. Results obtained for birds indicate that 80 species of birds were recorded in all islands surveyed 142 plant species, 52 invertebrates, 6 mammals, 6 reptiles and 5 species of amphibians. Socio-economic findings revealed that various human activities are still taking place extensively in the islands. The main drivers of biodiversity change in Kivu islands are disturbance level, the location of island vis-a-vis the main land and the size of the island. However Kivu islands have high potential of income generation and sustainable enhancement of local community livelihood."

Fig. 2 - 8-11-2 Healthy vegetation colours composite (left) and 12-11-4 Urban composite (right).

[2D view](#) [2D view](#)

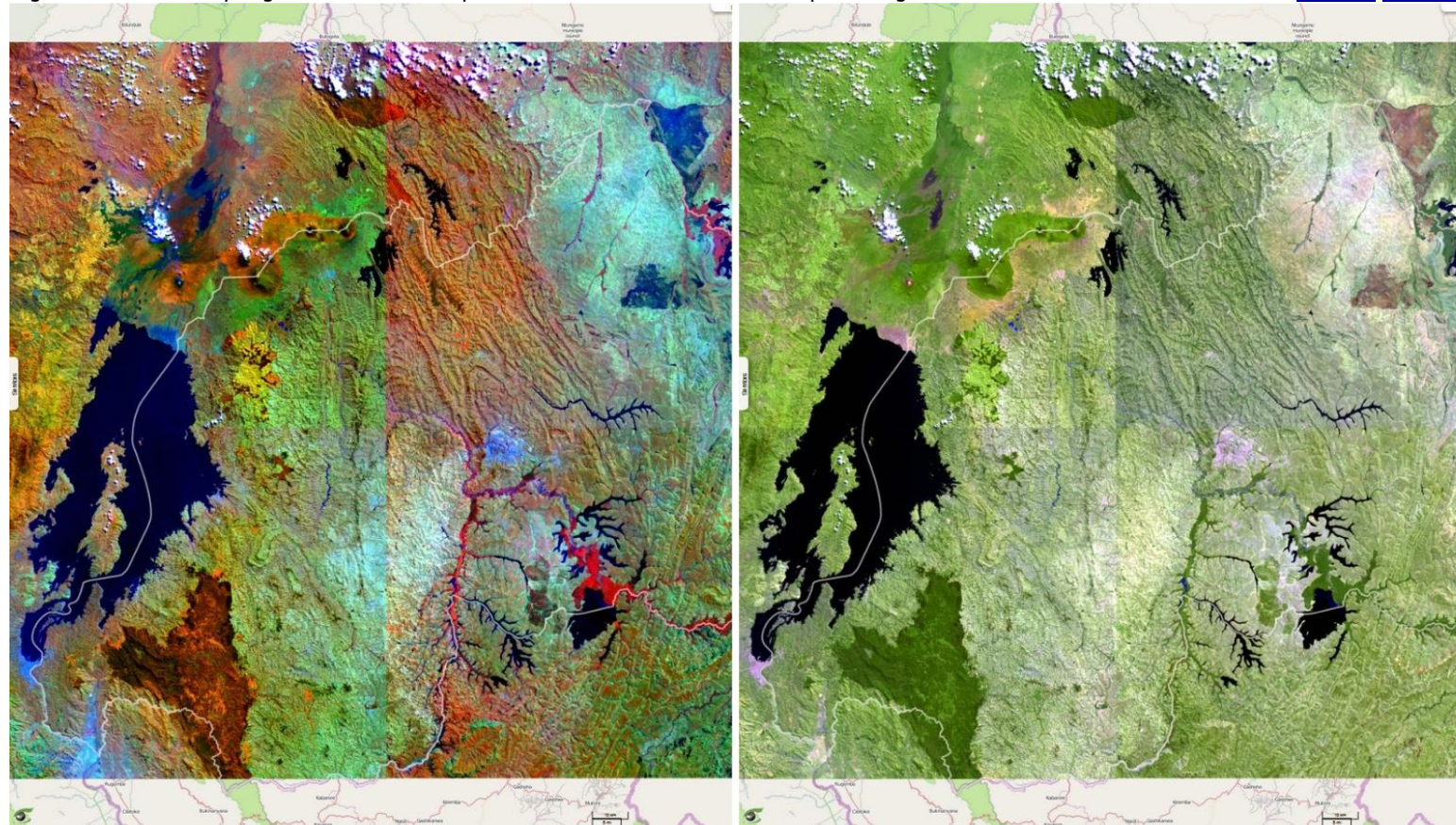
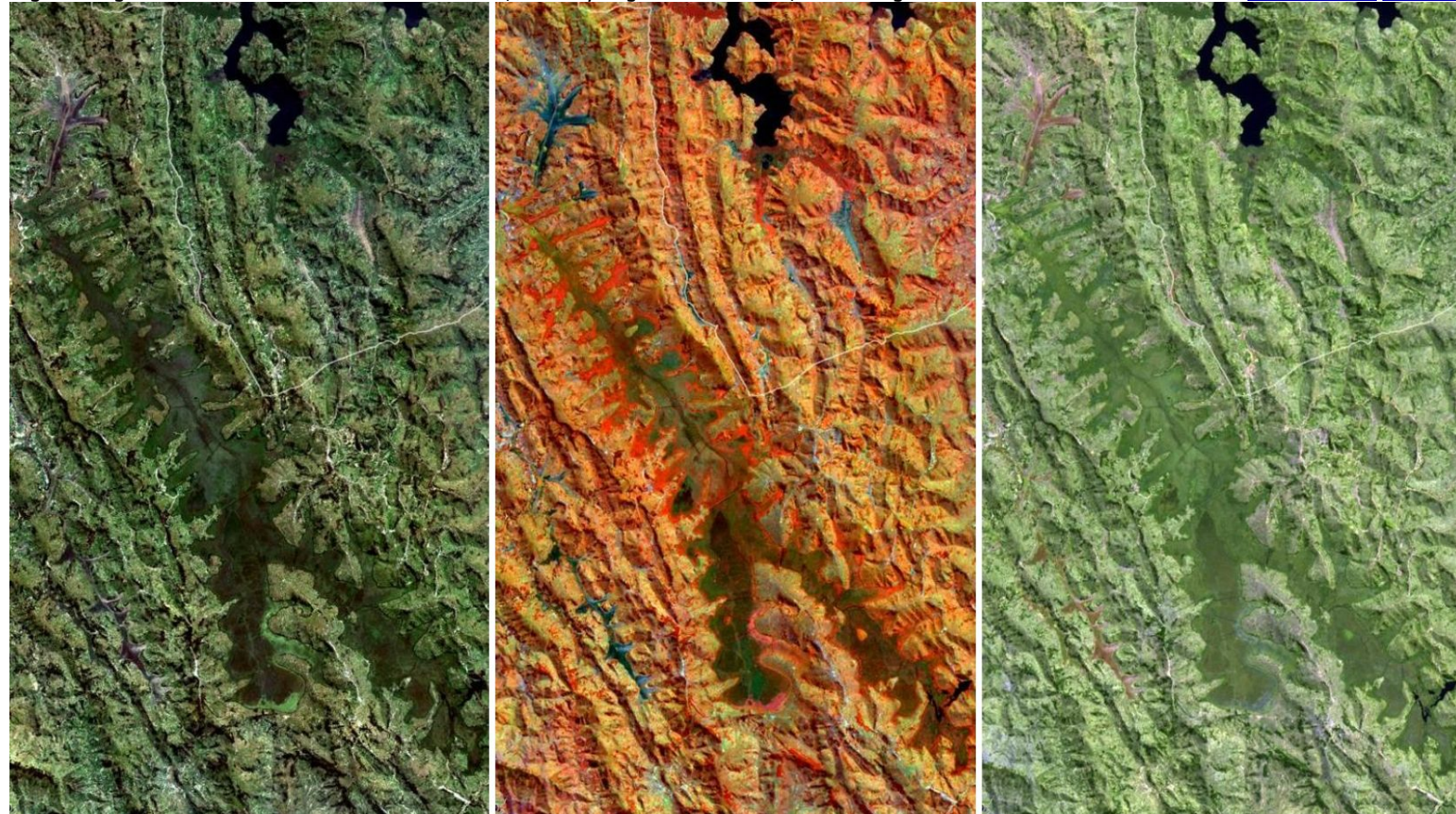


Fig. 3 - Rugezi marsh seen in -natural colours (left), -healthy vegetation (middle), -urban (right).

[2D animation](#) [2D view](#)















Paul Ouedraogo commented: "The Rugezi-Burera-Ruhondo wetland (6,736 ha) is a Ramsar Site in Rwanda. Rwanda registered many achievements in wetlands preservation and wise use, such as wetlands mapping and categorization, land registration and wetlands law enforcement. However, in Rwanda there is still a lot of pressure on wetlands, especially with poor agriculture, peat extraction, illegal mining, pollution, constructions in wetlands; among others. Therefore, REMA is working to raise awareness on activities aiming at wetlands wise use and restoration; to realize their economic and environmental benefits."

Fig. 4 - Nyiragongo lava lake (DRC on the left) and terrace crops on the slopes of Mount Karisimbi (Rwanda). [2D view](#)



The views expressed herein can in no way be taken to reflect the official opinion of the European Space Agency or the European Union.

More on European Commission space:									
More on ESA:				S-1 website	S-2 website	S-3 website			
More on Copernicus program:				SciHub portal	Cophub portal	Inthub portal	Colhub portal		
More on VisioTerra:				Sentinel Vision Portal	Envisat+ERS portal	Swarm+GOCE portal	CryoSat portal	Proba-V portal	