

Deadly landslide in Gjerdrum, Norway

Sentinel-2 MSI acquired on 26 November 2020 at 10:54:01 UTC

Sentinel-1 CSAR IW acquired on 24 December 2020 at 05:39:18 & 16:53:45 UTC

Sentinel-1 CSAR IW acquired on 30 December 2020 at 05:39:43 & 16:54:25 UTC

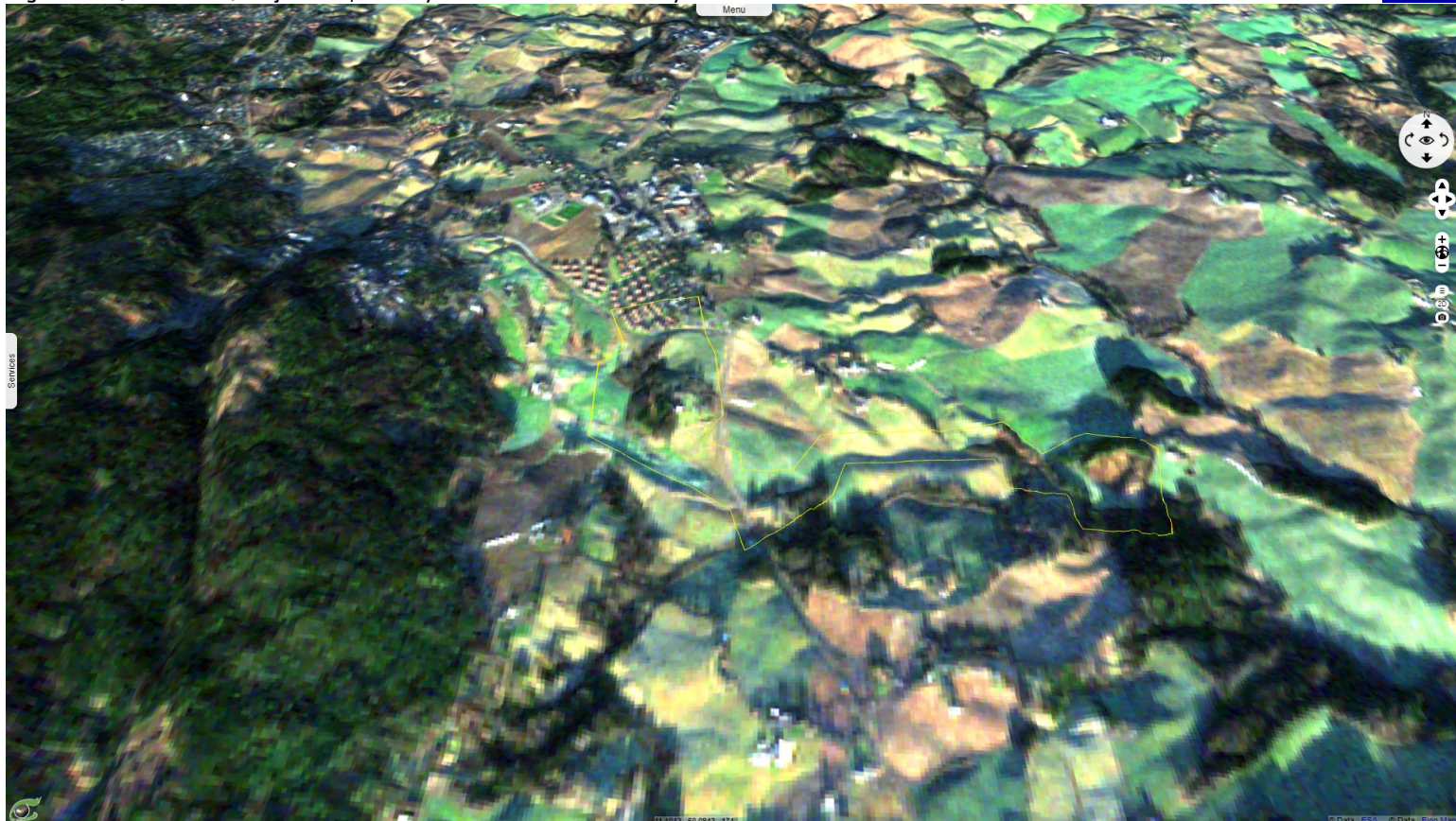
Author(s): Sentinel Vision team, VisioTerra, France - syp@visioterra.fr

Keyword(s): Geohazard, landslide, emergency, Norway

[3D Layerstack](#)

Fig. 1 - S2 (26.11.2020) - Gjerdrum, Norway before it was affected by a landslide on 30.12.2020 at 4am.

[3D view](#)



The landslide swept away nine buildings comprising some thirty dwellings causing a toll of seven dead and three missing.

Fig. 2 - S1 (24.12.2020) - Mean of ascending & descending orthorectified acquisitions of 24.12.2020 before the landslide.

[3D view](#)

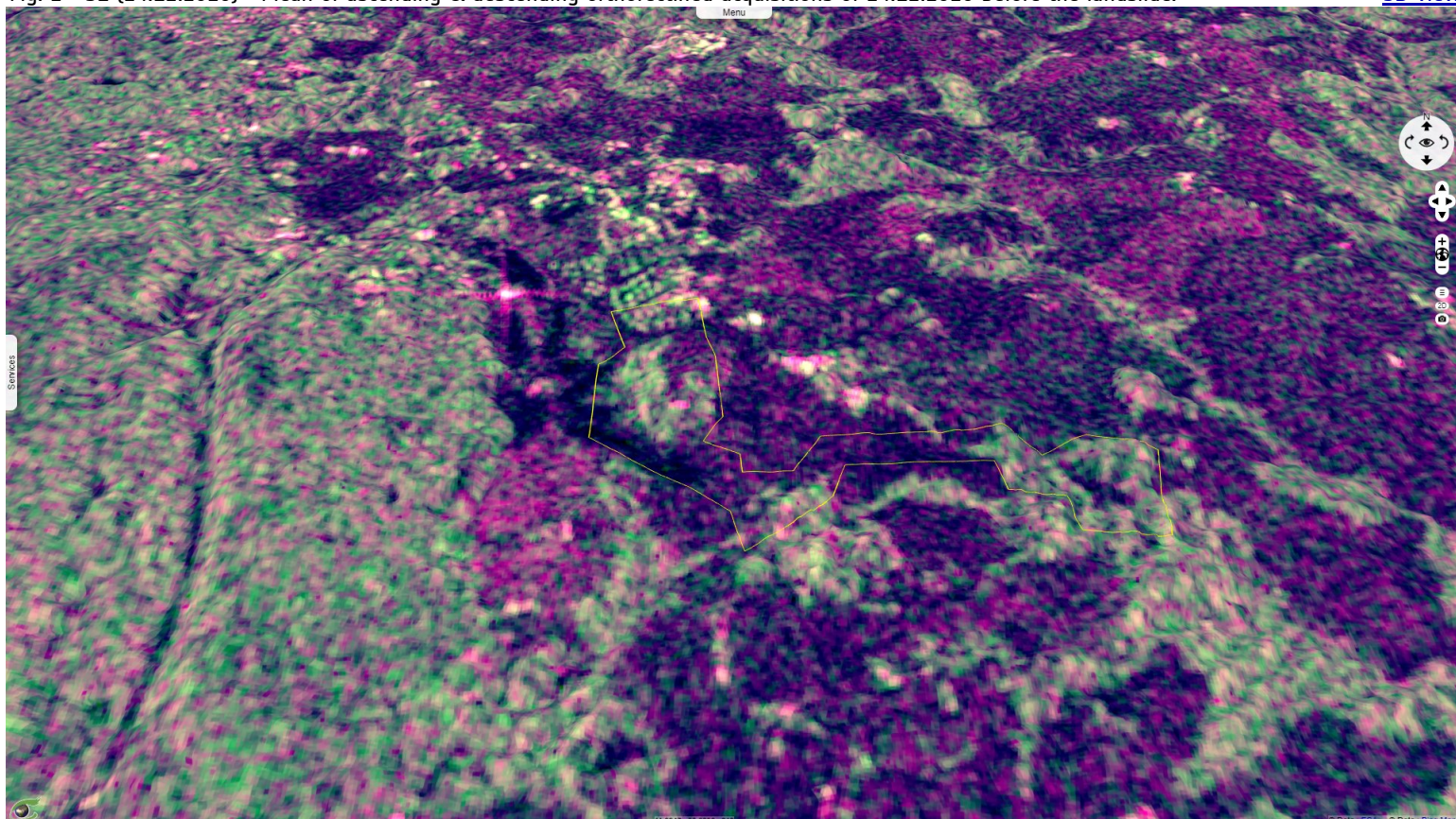


Fig. 3 - S1 (30.12.2020) - Mean of ascending & descending orthorectified acquisitions of 30.12.2020 after the landslide.

[3D view](#)

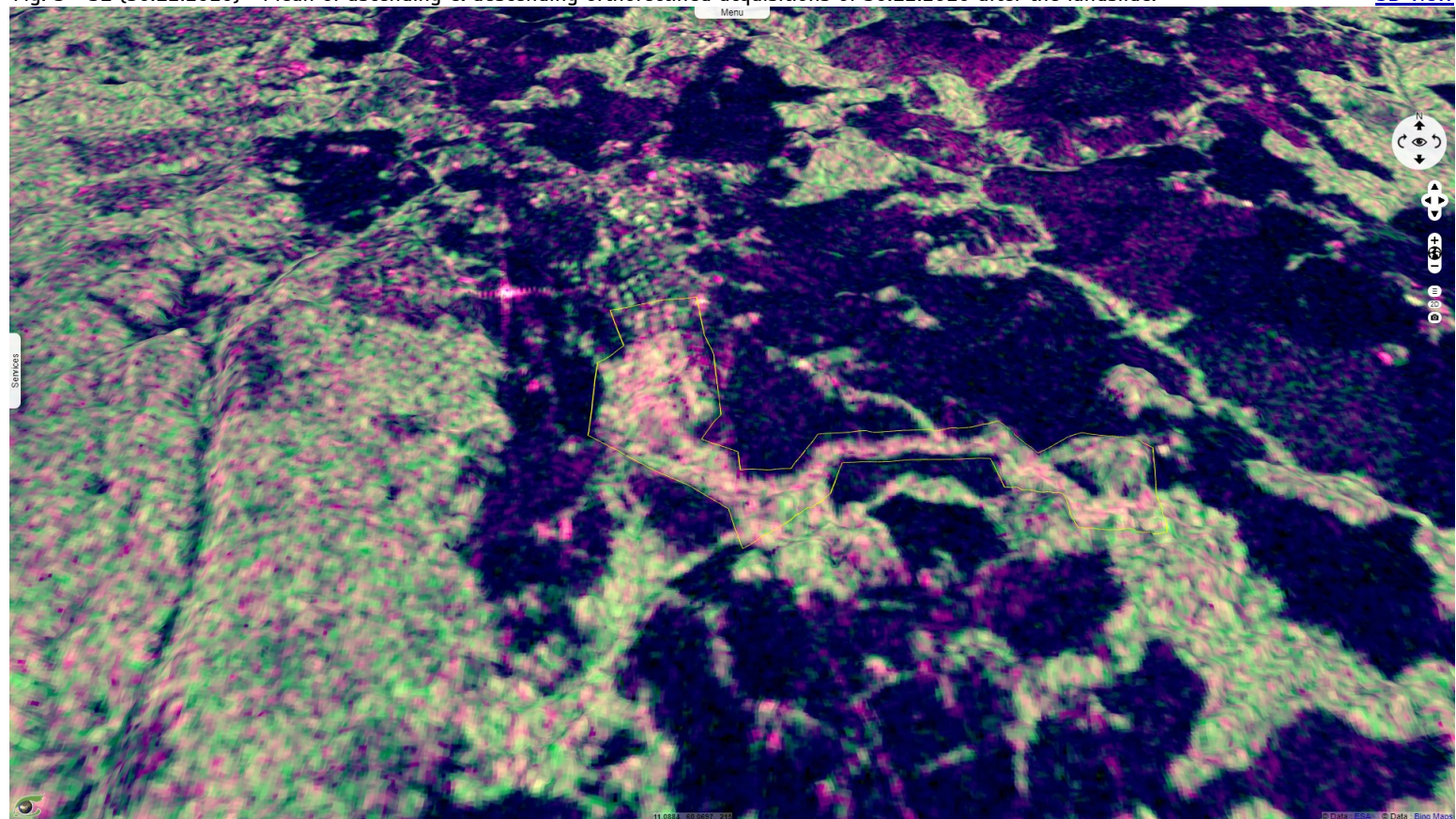
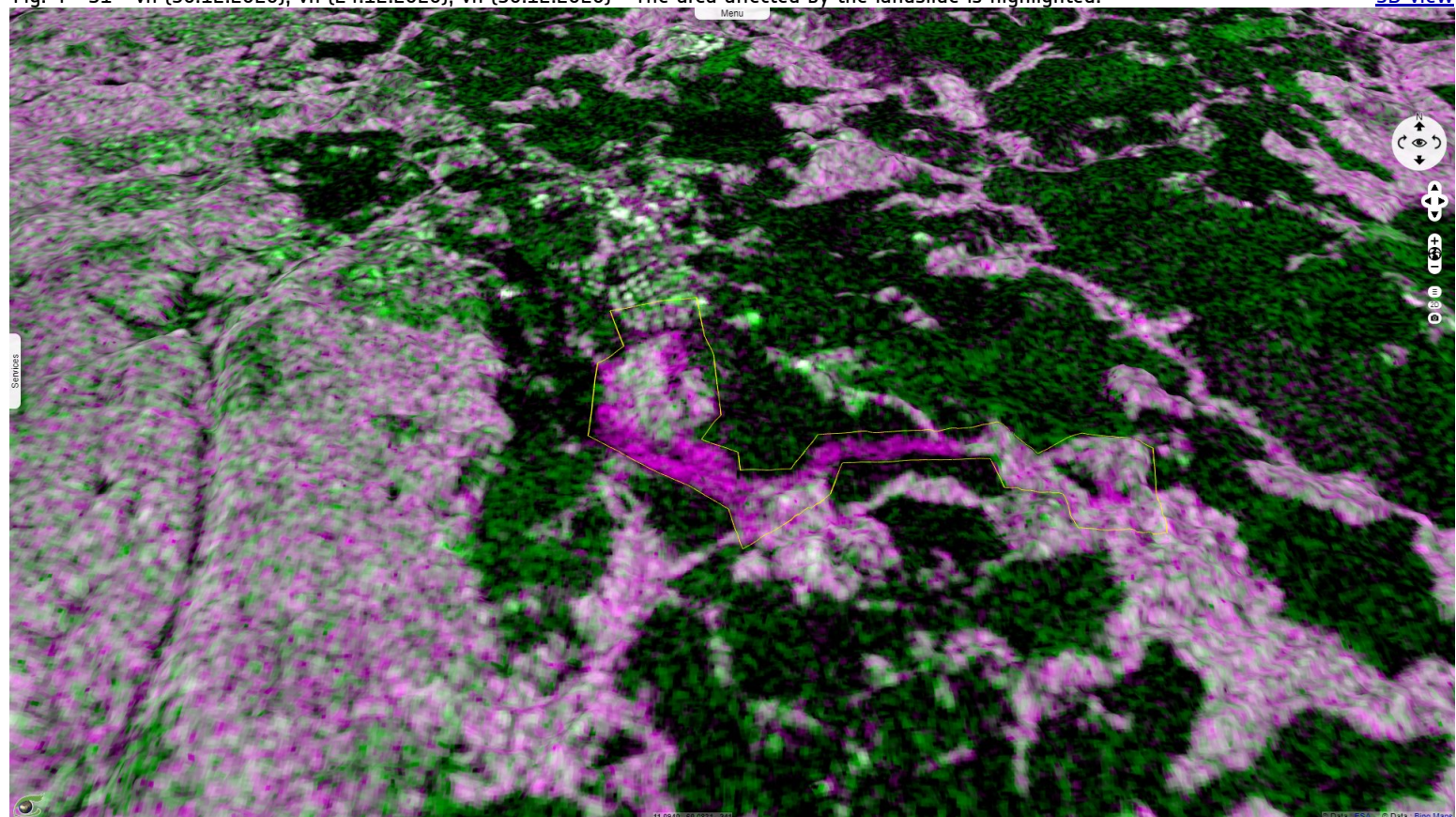














Fig. 4 - S1 - vh (30.12.2020), vh (24.12.2020), vh (30.12.2020) - The area affected by the landslide is highlighted.

[3D view](#)



*The views expressed herein can in no way be taken to reflect the official opinion of the European Space Agency or the European Union.
Contains modified Copernicus Sentinel data 2021, processed by VisioTerra.*

More on European Commission space:						
More on ESA:				S-1 website	S-2 website	S-3 website
More on Copernicus program:				SciHub portal	Cophub portal	Inthub portal
More on VisioTerra:				Sentinel Vision Portal	Envisat+ERS portal	Swarm+GOCE portal
				CryoSat portal		