

Inhabited lakes between Amsterdam & Utrecht, NL

Sentinel-1 CSAR IW acquired on 02 March 2018 at 05:58:11 UTC
Sentinel-2 MSI acquired on 02 March 2018 at 10:50:21 UTC
Sentinel-1 CSAR IW acquired on 18 April 2020 at 17:25:08 UTC
Sentinel-2 MSI acquired on 20 April 2020 at 10:50:31 UTC

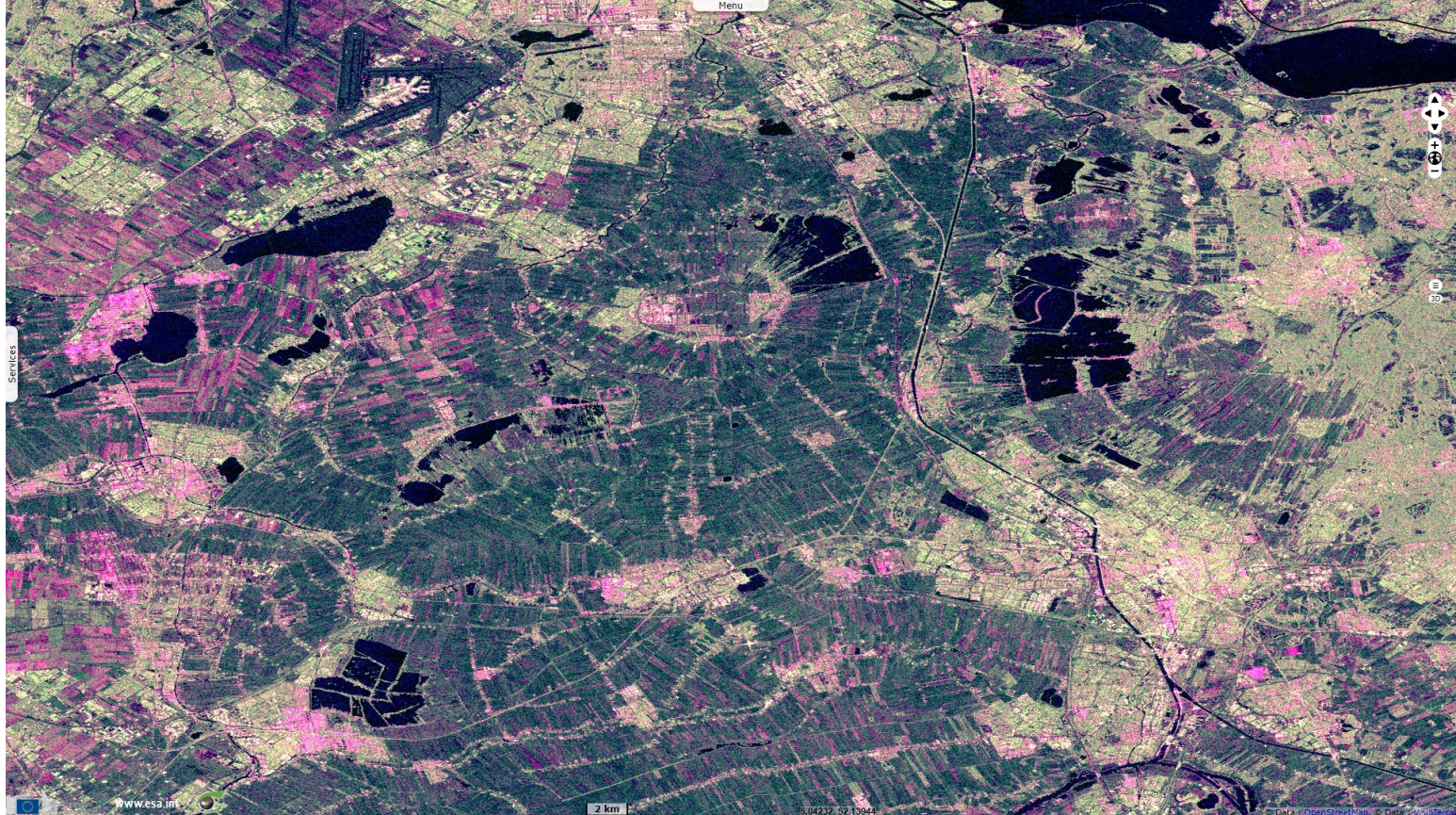
Author(s): Sentinel Vision team, VisioTerra, France - svp@visioterra.fr

Keyword(s): Lake, mine, urban planning, channels, the Netherlands, NL



[2D Layerstack](#)

Fig. 1 - S1 (18.04.2020) - Now Natura 2000 areas, these lakes between Amsterdam & Utrecht formed through unchecked peat extraction. [2D view](#)



The Netherlands are the most densely populated country in Europe; its limited farmland area is highly productive and mechanized.

Fig. 2 - S2 (20.04.2020) - Reeuwijk lakes. Channels & dykes are plentiful, with ~26% of NL area & 21% of its population below sea level. [2D view](#)

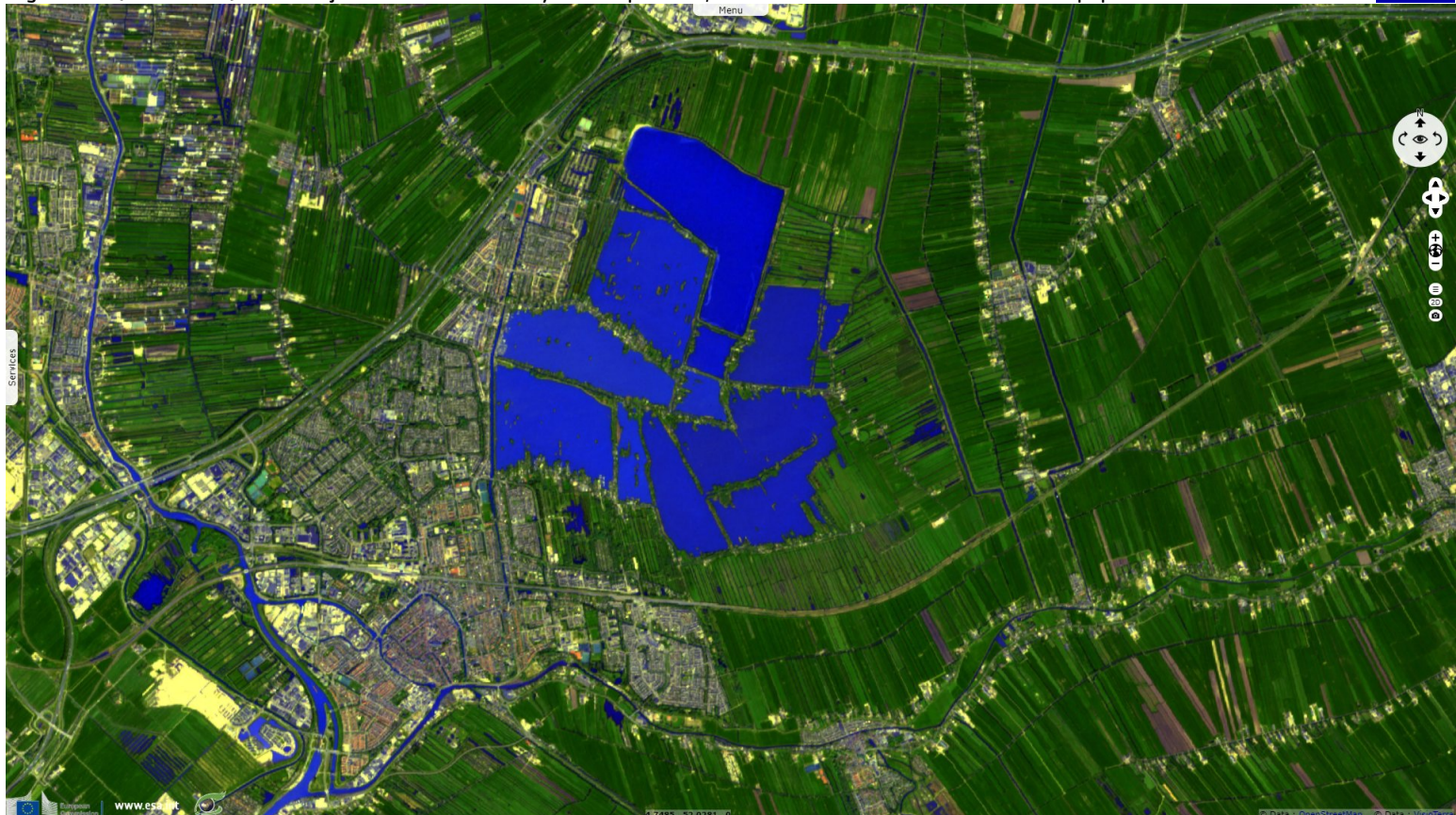


Fig. 3 - Frozen Loosdrechtse Plassen. Popular with tourists, Oud-Loosdrecht consists mainly of lakeside villas built along 5 streets & 3 dikes. [2D view](#)

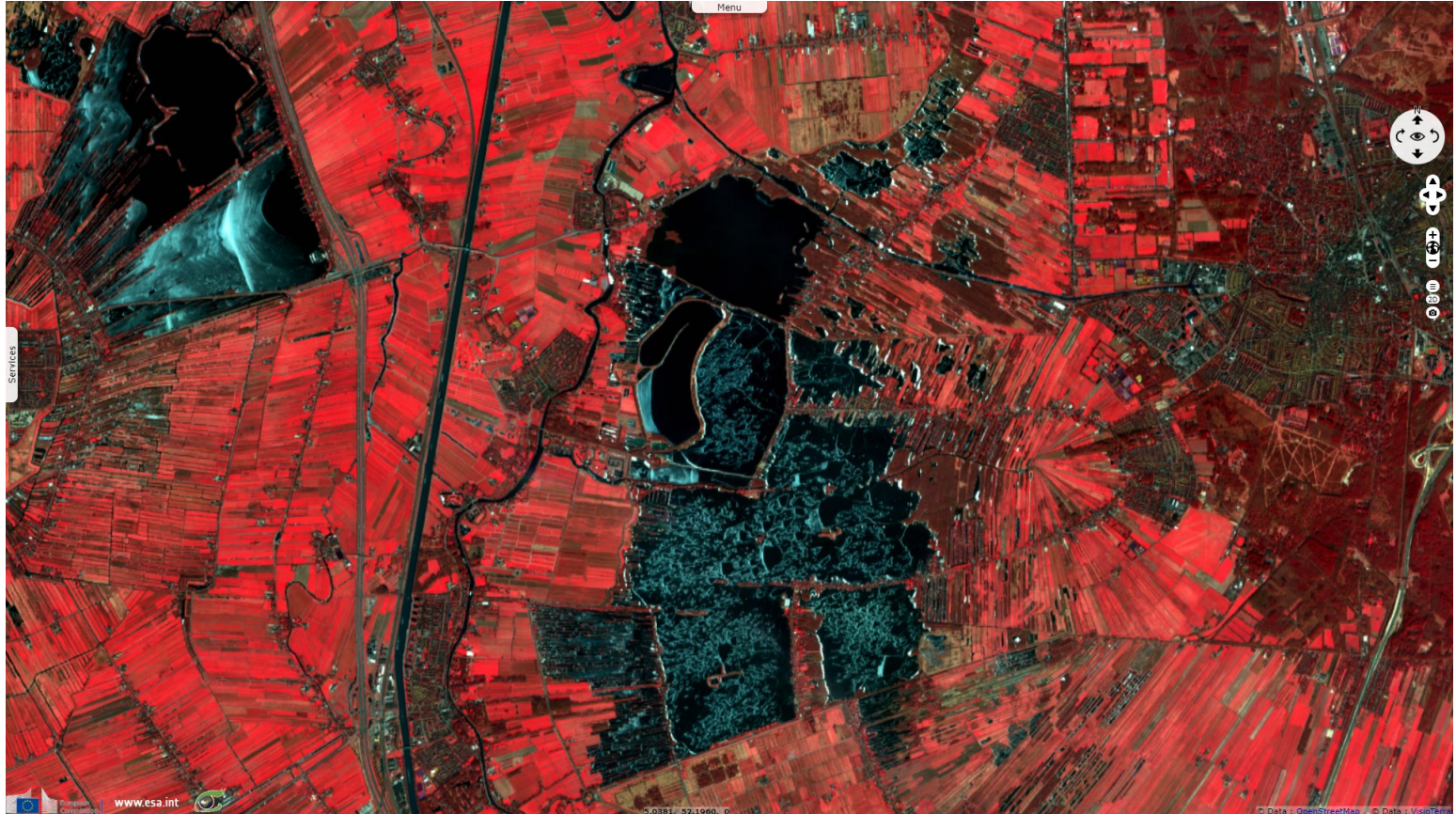
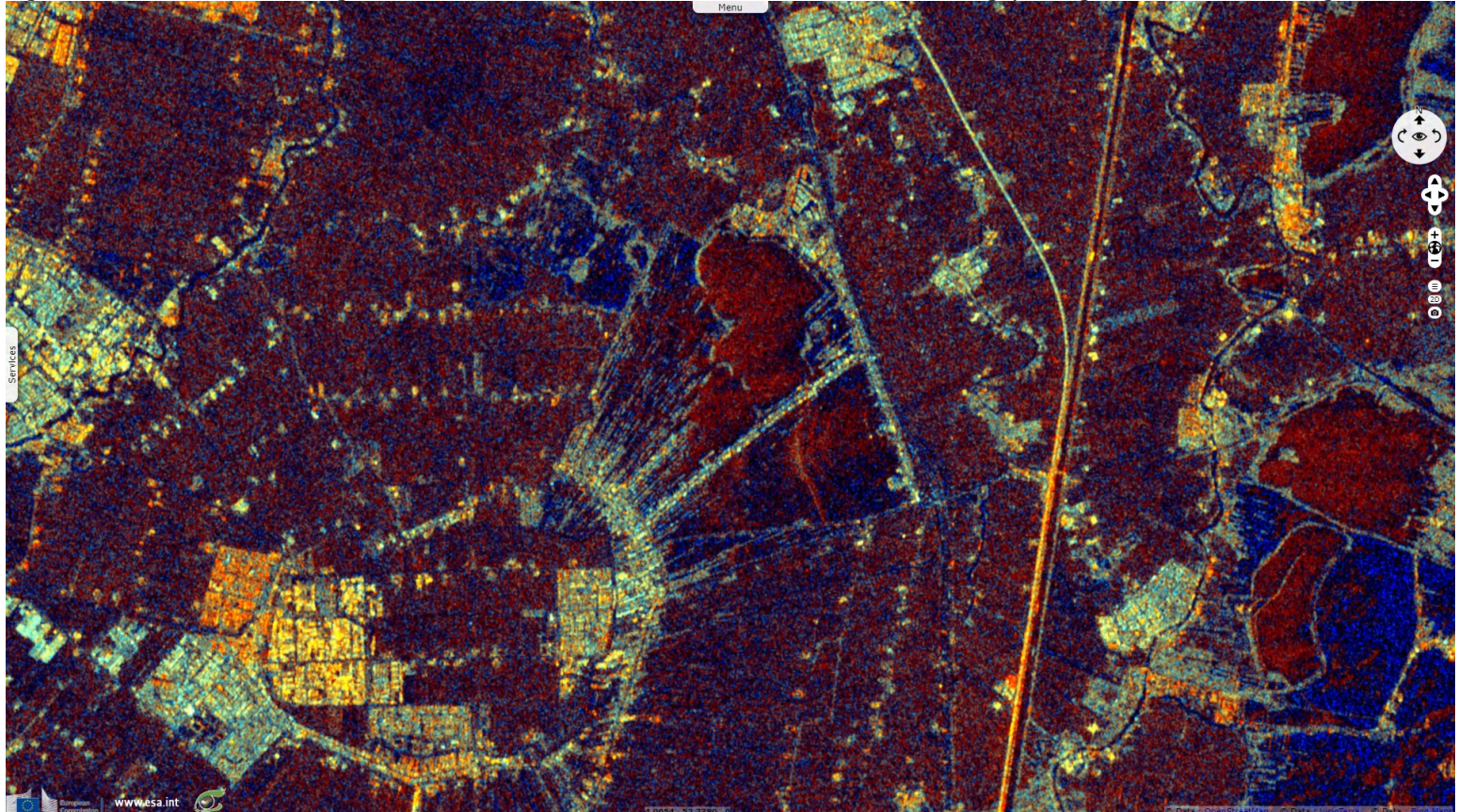


Fig. 4 - S1 (02.03.2018) - Radial agriculture around iced Vinkeveense recreational lake. It allows sailing, yachting & sometimes ice skating. [3D view](#)



*The views expressed herein can in no way be taken to reflect the official opinion of the European Space Agency or the European Union.
Contains modified Copernicus Sentinel data 2019, processed by VisioTerra.*

More on European Commission space:							
More on ESA:				S-1 website	S-2 website	S-3 website	
More on Copernicus program:				SciHub portal	Cophub portal	Inthub portal	Colhub portal
More on VisioTerra:				Sentinel Vision Portal	Envisat+ERS portal	Swarm+GOCE portal	CryoSat portal