

Mexico city nested among volcanoes

Sentinel-2 MSI acquired on 03 March 2019 at 17:02:09 UTC
Sentinel-1 CSAR IW acquired on 17 March 2019 at 12:25:14 UTC

...
Sentinel-1 CSAR IW acquired on 28 March 2019 from 12:33:45 to 12:34:10 UTC
Sentinel-1 CSAR IW acquired on 01 April 2019 at 00:39:37 UTC

Author(s): Sentinel Vision team, VisioTerra, France - svp@visioterra.fr

Keyword(s): Land, urban, atmosphere, plateau, mountain range, volcanoes, air quality, valley, endorheic basin, Mexico

[3D Layerstack](#)

Fig. 1 - S1 (20&25.03.2019, 01.04.2019) - neg(vh),neg(vv),neg(vh) colour composite - Mexico was previously the World's largest city. [2D view](#) [3D view](#)

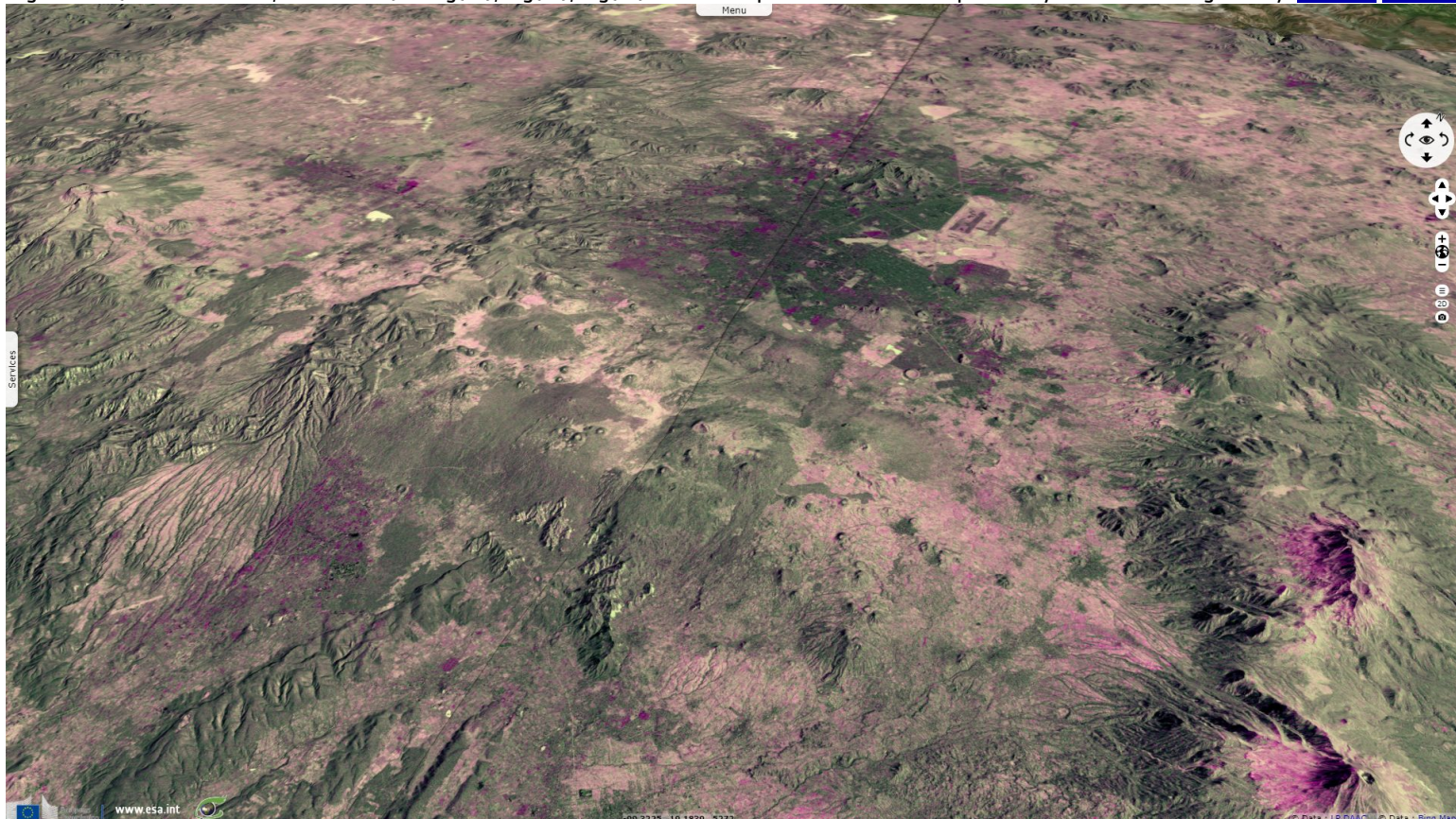


Fig. 2 - S2 (03.03.2019) - 12,11,4 composite - It's nested on a plateau flanked by volcanoes, e.g. Popocatepetl (at SE), here erupting [3D view](#) [2D view](#)

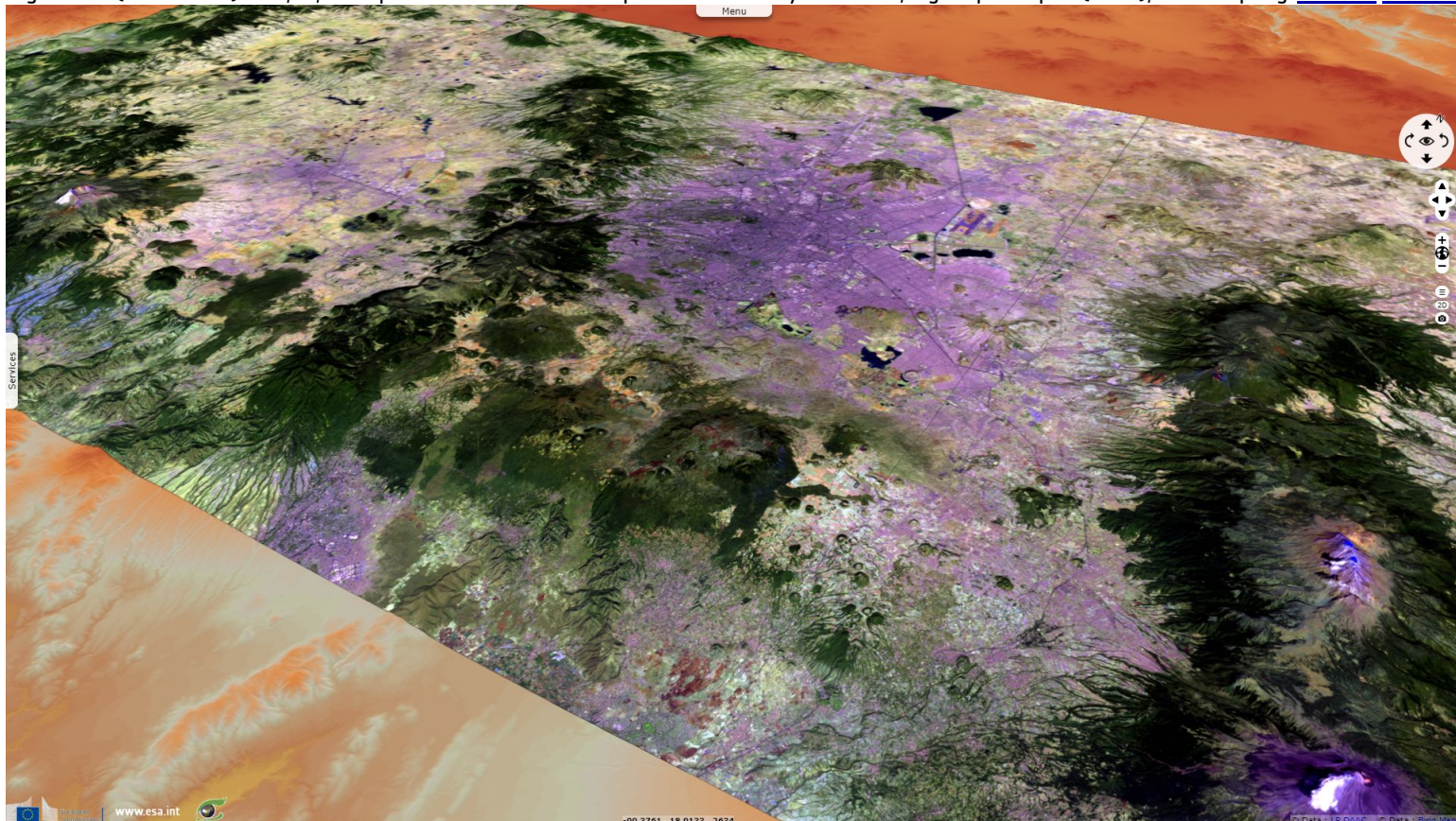


Fig. 3 - S2 (03.03.2019) - 11,8,2 colour composite - The water deficit of this endorheic basin causes a yearly decimetric subsidence. [3D view](#) [2D view](#)

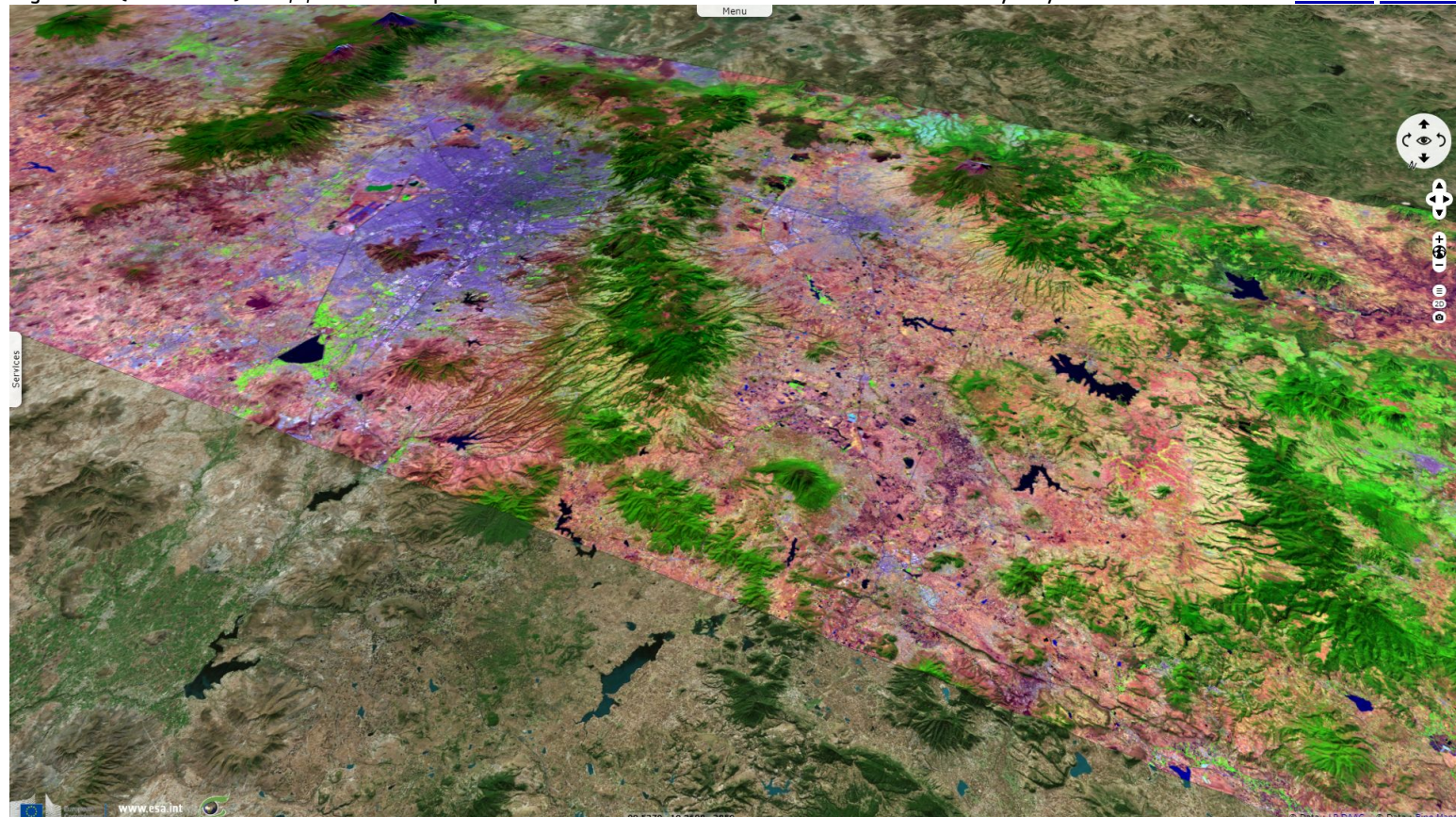














Fig. 4 - S1 (17, 28 & 29.03.2019) - vv,vh,vv composite - Its bowl shape also caused air pollution but lasting efforts allowed a recovery. [2D view](#)



*The views expressed herein can in no way be taken to reflect the official opinion of the European Space Agency or the European Union.
Contains modified Copernicus Sentinel data 2019, processed by VisioTerra.*

More on European Commission space:						
More on ESA:				S-1 website	S-2 website	S-3 website
More on Copernicus program:				SciHub portal	Cophub portal	Inthub portal
More on VisioTerra:				Sentinel Vision Portal	Envisat+ERS portal	Swarm+GOCE portal
					CryoSat portal	