

Floods and droughts affect Brazil

Sentinel-1 CSAR IW acquired on 25 June 2020 at 08:46:04 UTC
Sentinel-1 CSAR IW acquired on 08 March 2021 from 09:45:34 to 09:46:03 UTC
Sentinel-1 CSAR IW acquired on 28 May 2021 from 08:39:22 to 08:39:52 UTC
...

Author(s): Sentinel Vision team, VisioTerra, France - svp@visioterra.fr

Keyword(s): Natural disaster, emergency, drought, precipitations, flash flooding, Brazil



[2D Layerstack](#)

Fig. 1 - S1 (09.06.2021; 12.06.2021 & 20.06.2021) - Parts of Brazil are currently affected by floods and others by droughts.

[2D view](#)

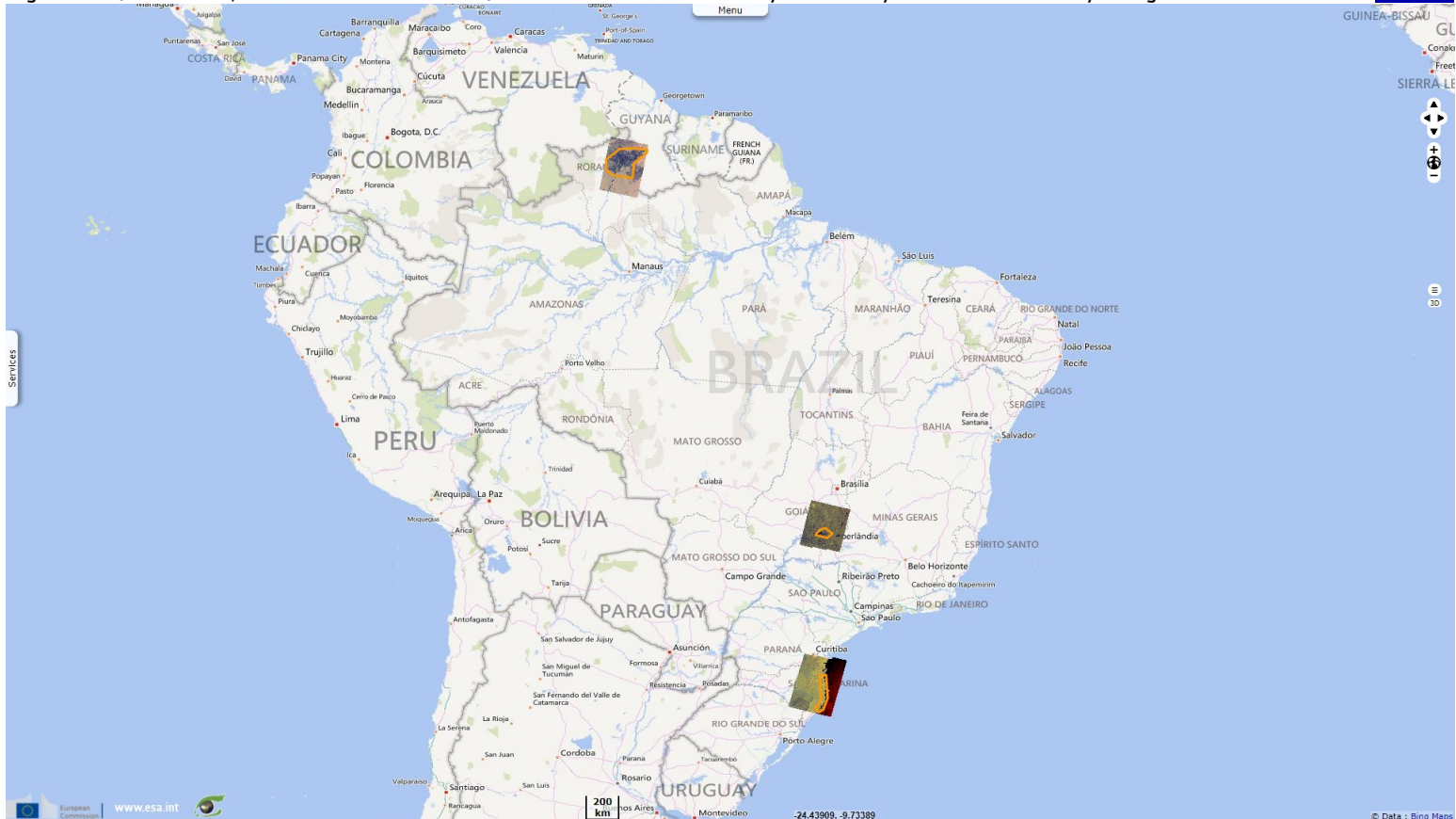
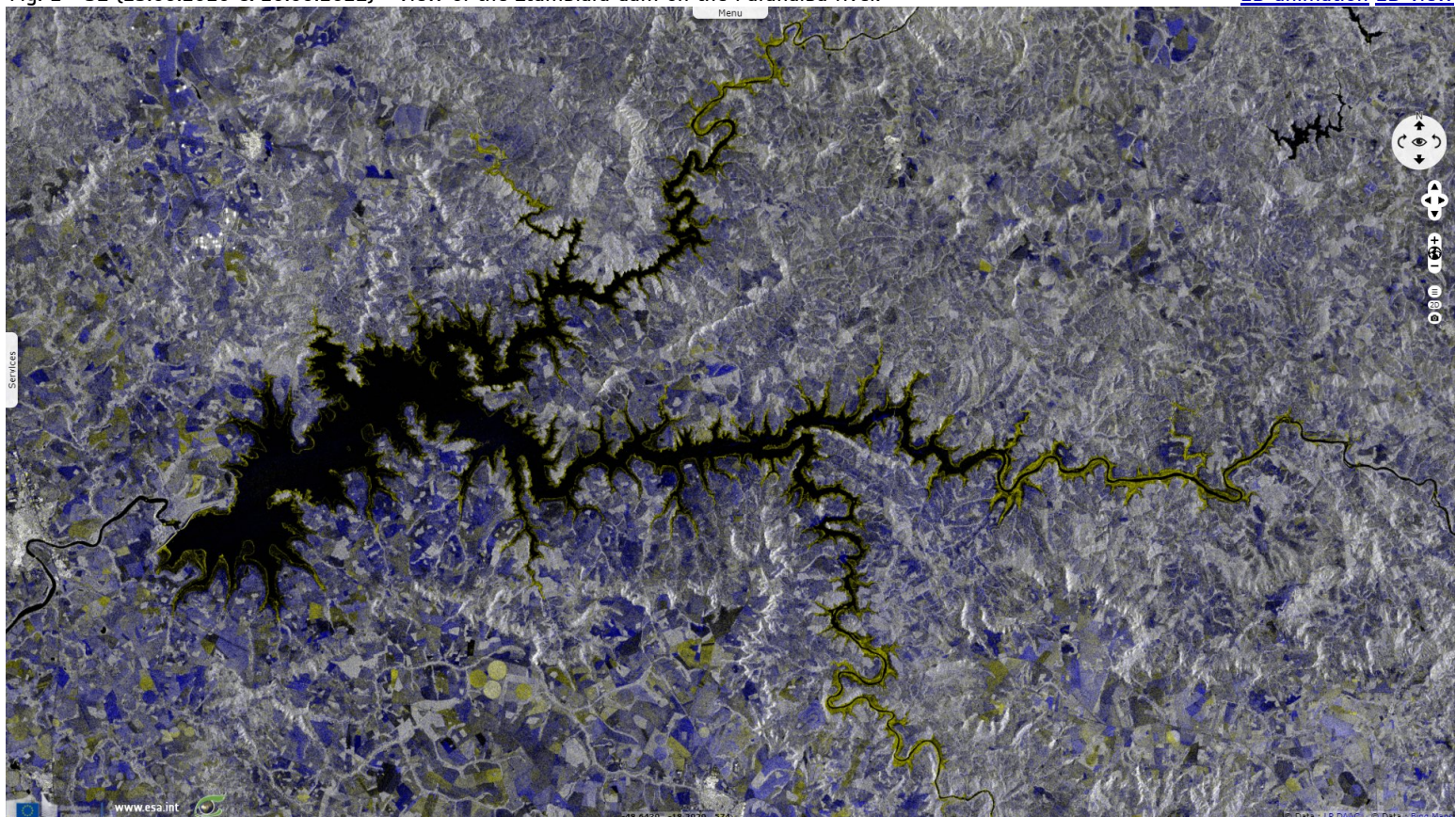


Fig. 2 - S1 (25.06.2020 & 20.06.2021) - View of the Itumbiara dam on the Paranaíba river.

[2D animation](#) [2D view](#)



Yellow areas are 'bathtub ring' due to the drought in the Parana basin. Water levels on the Paraná River are around 8.5 m below average.

Fig. 3 - S1 (08.03.2021; 12.06.2021) - Long-term heavy rainfall in Roraima have caused rivers to rise above flood stage. [2D animation](#) [2D view](#)

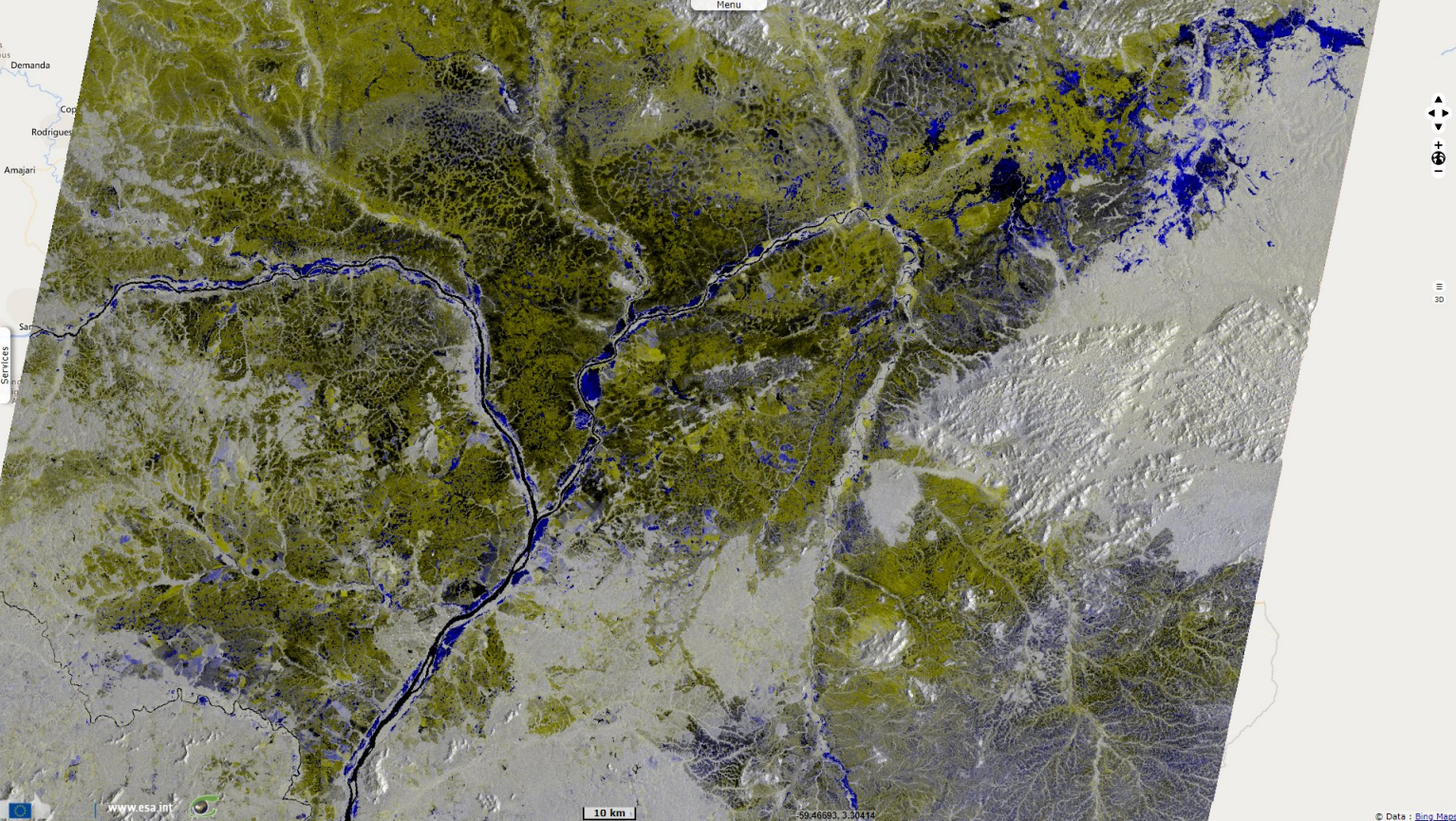
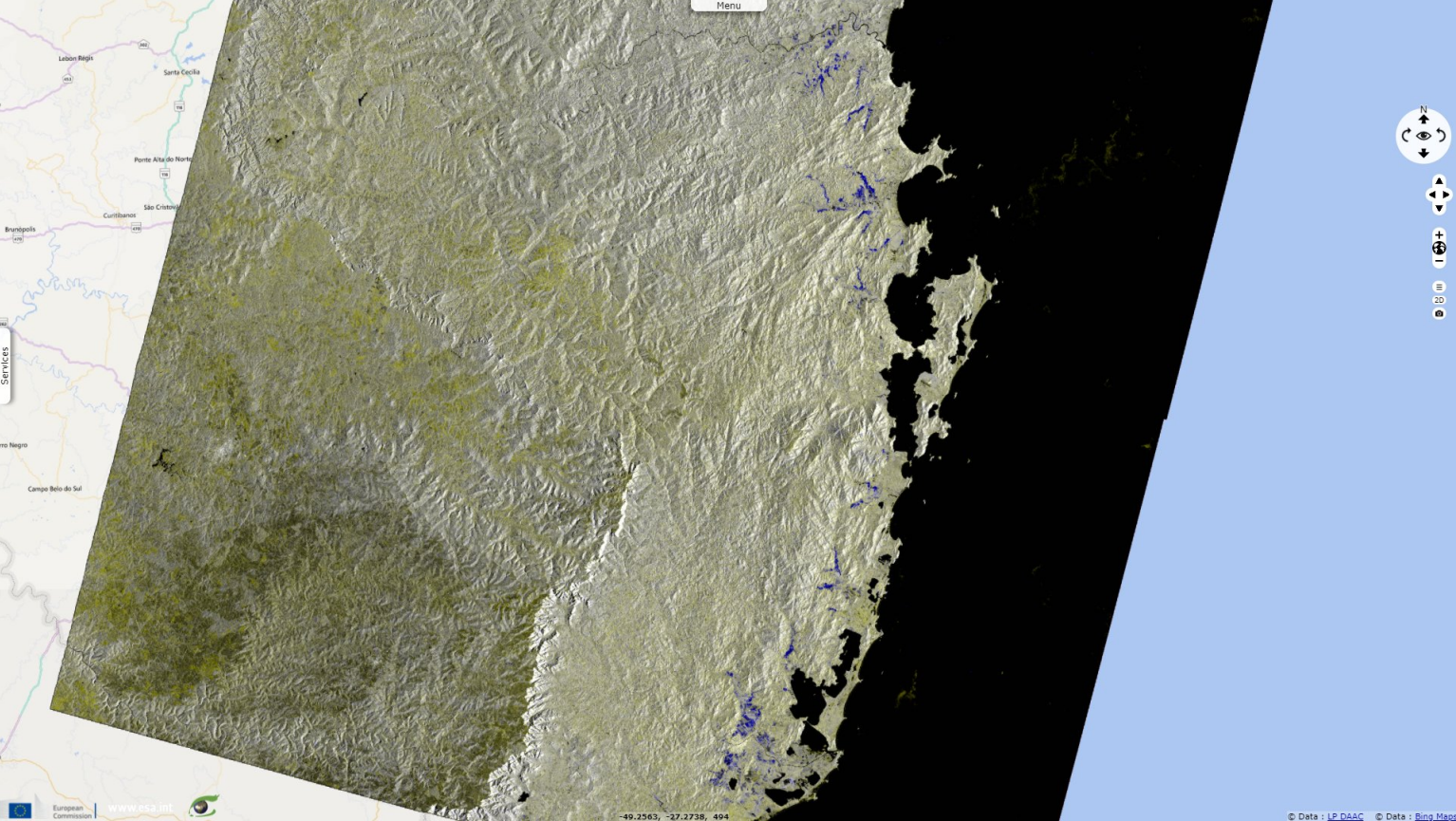














Fig. 4 - S1 (09 & 21.06.2021) - 280 mm of rain in 24h triggered flash floods in Santa Catarina state that are not unusual for its coastal cities. [3D animation](#) [3D view](#)



The views expressed herein can in no way be taken to reflect the official opinion of the European Space Agency or the European Union.
Contains modified Copernicus Sentinel data 2021, processed by VisioTerra.

More on European Commission space:							
More on ESA:				S-1 website	S-2 website	S-3 website	
More on Copernicus program:				SciHub portal	Cophub portal	Inthub portal	Colhub portal
More on VisioTerra:				Sentinel Vision Portal	Envisat+ERS portal	Swarm+GOCE portal	CryoSat portal

