

Flooding in southern France

Sentinel-1 CSAR IW acquired on **18 October 2019** at 05:52:23 UTC
Sentinel-1 CSAR IW acquired on **18 October 2019** at 05:52:48 UTC
Sentinel-1 CSAR IW acquired on **24 October 2019** at 05:51:58 UTC
Sentinel-2 MSI acquired on **25 October 2019** at 10:40:29 UTC

Author(s): Sentinel Vision team, VisioTerra, France - svp@visioterra.fr

Keyword(s): flooding, natural disaster, Hérault, France



[2D Layerstack](#)

Fig. 1 - S1 (18.10.2019) - vv,vh,ndi(vh,vv) - σ_0 - South of the France departments Hérault before the flooding.

[2D view](#)

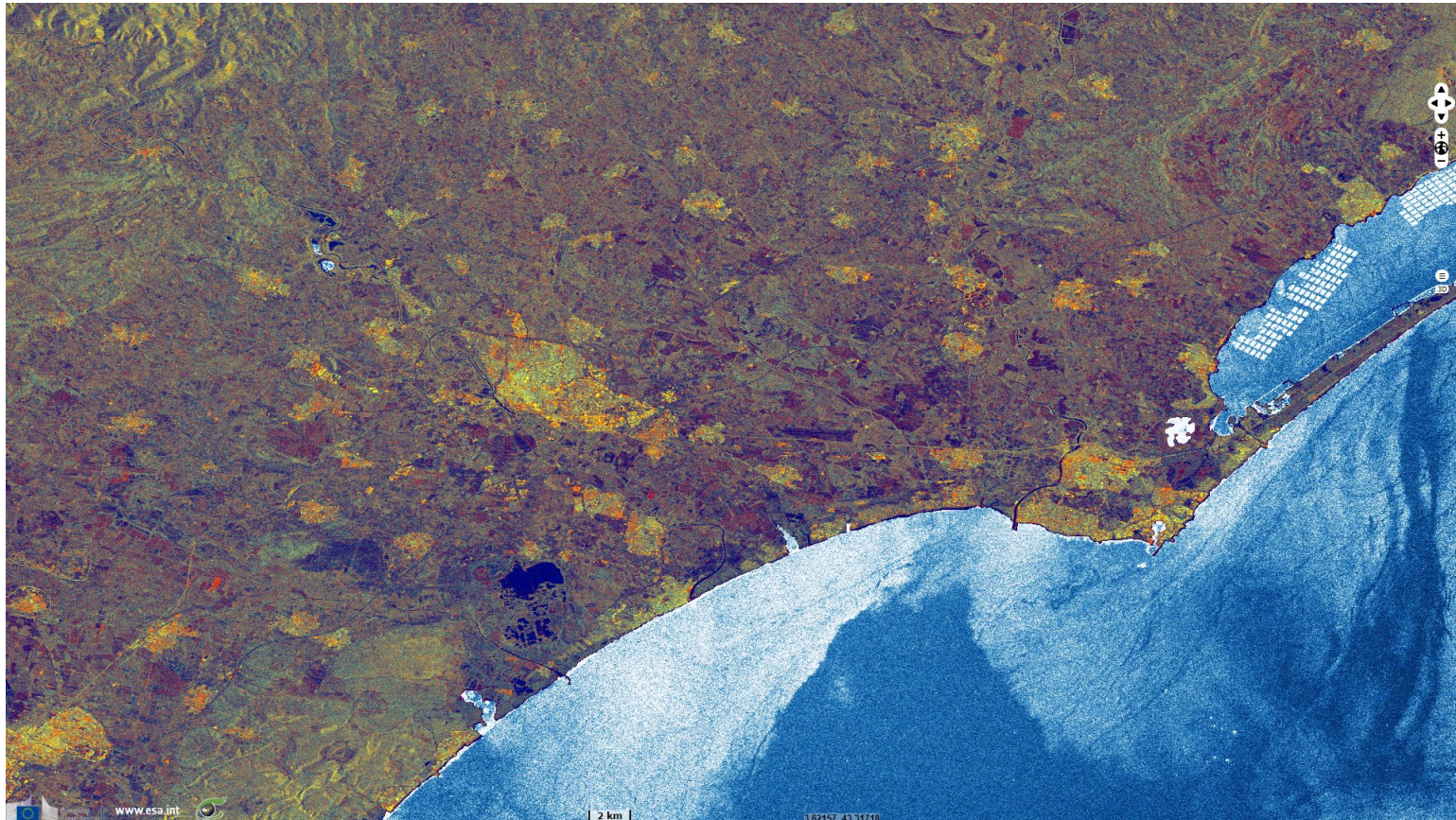


Fig. 2 - S1 (24.10.2019) - vv,vh,ndi(vh,vv) - σ_0 - The same view after the storm shows the flooded areas in strong blue.

[2D view](#)

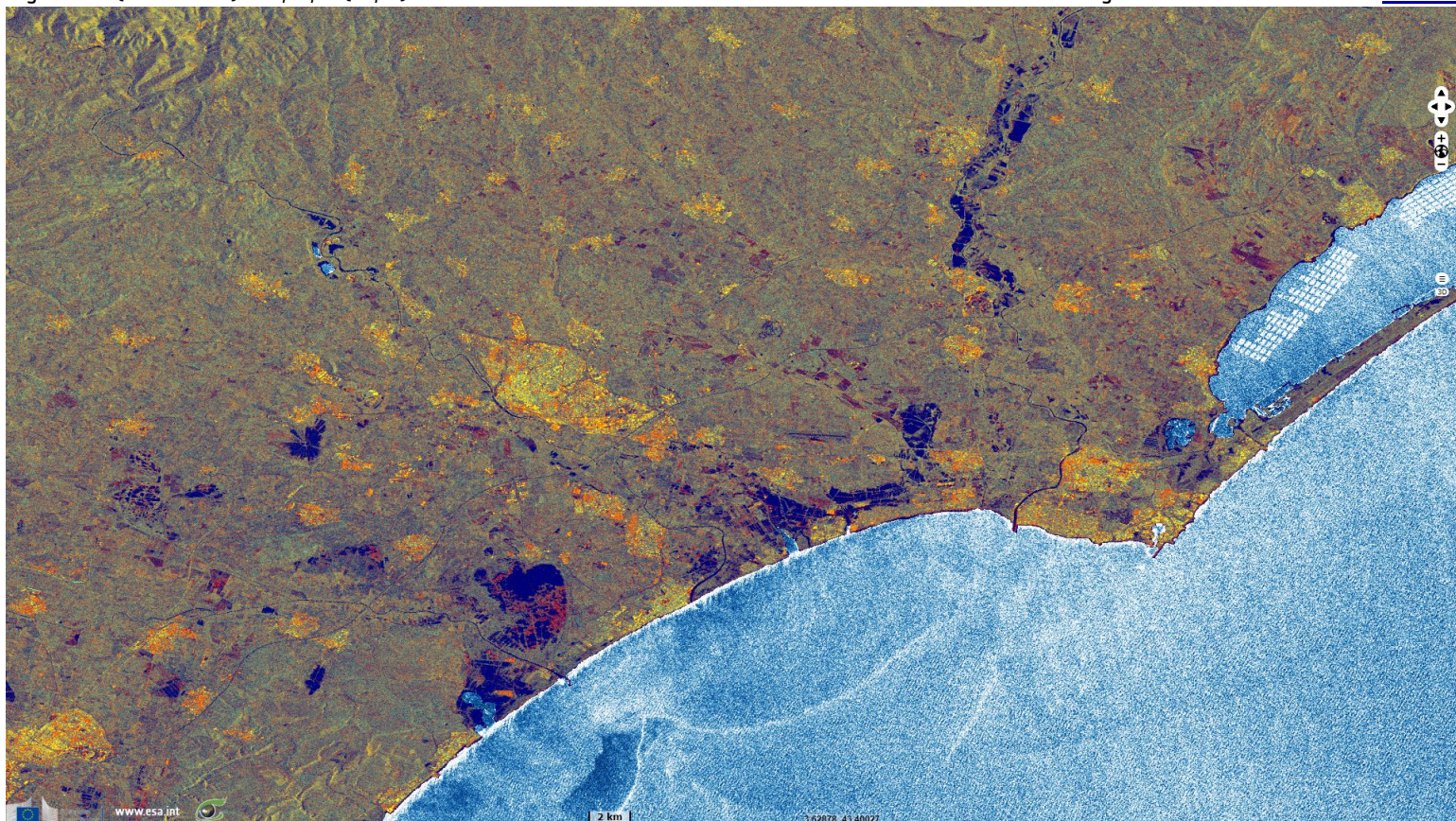


Fig. 3 - S1 (R: after, B: after, G: before) - vv (left) - vh (right) - The blue spots correspond to the areas which now contain water. [2D view](#) [2D view](#)

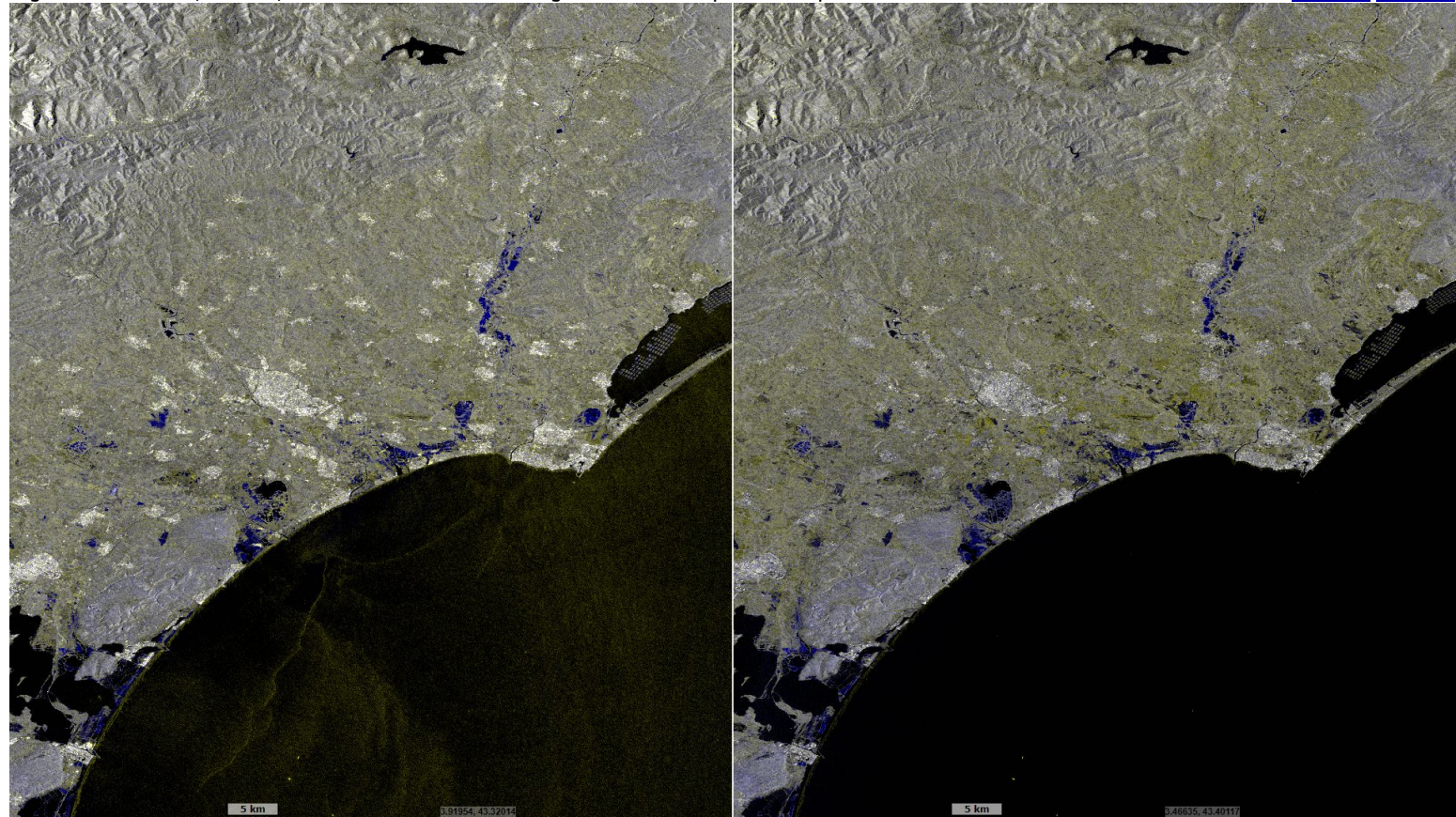














Fig. 4 - S2 (25.10.2019) - 12,11,4 - This view shows in blue the open water and moist soil as well as the sediments coming from rivers. [3D view](#)



*The views expressed herein can in no way be taken to reflect the official opinion of the European Space Agency or the European Union.
Contains modified Copernicus Sentinel data 2019, processed by VisioTerra.*

More on European Commission space:						
More on ESA:				S-1 website	S-2 website	S-3 website
More on Copernicus program:				SciHub portal	Cophub portal	Inthub portal
More on VisioTerra:				Sentinel Vision Portal	Envisat+ERS portal	Swarm+GOCE portal
				CryoSat portal		