

Lavelanet, a city squeezed between two mountains, France

Sentinel-1 CSAR IW acquired on 07 May 2017 at 17:47:01 UTC

...

Sentinel-1 CSAR IW acquired on 30 May 2017 at 06:00:38 UTC

Sentinel-2 MSI acquired on 17 April 2023 at 10:36:29 UTC

Author(s): Sentinel Vision team, VisioTerra, France - svp@visioterra.fr

Keyword(s): Urban planning, mountain range, hydrology, Pyrenees, France



[2D Layerstack](#)

Fig. 1 - COP-DEM - The city of Lavelanet is part of the Pyrenees foothills.

[2D view](#)

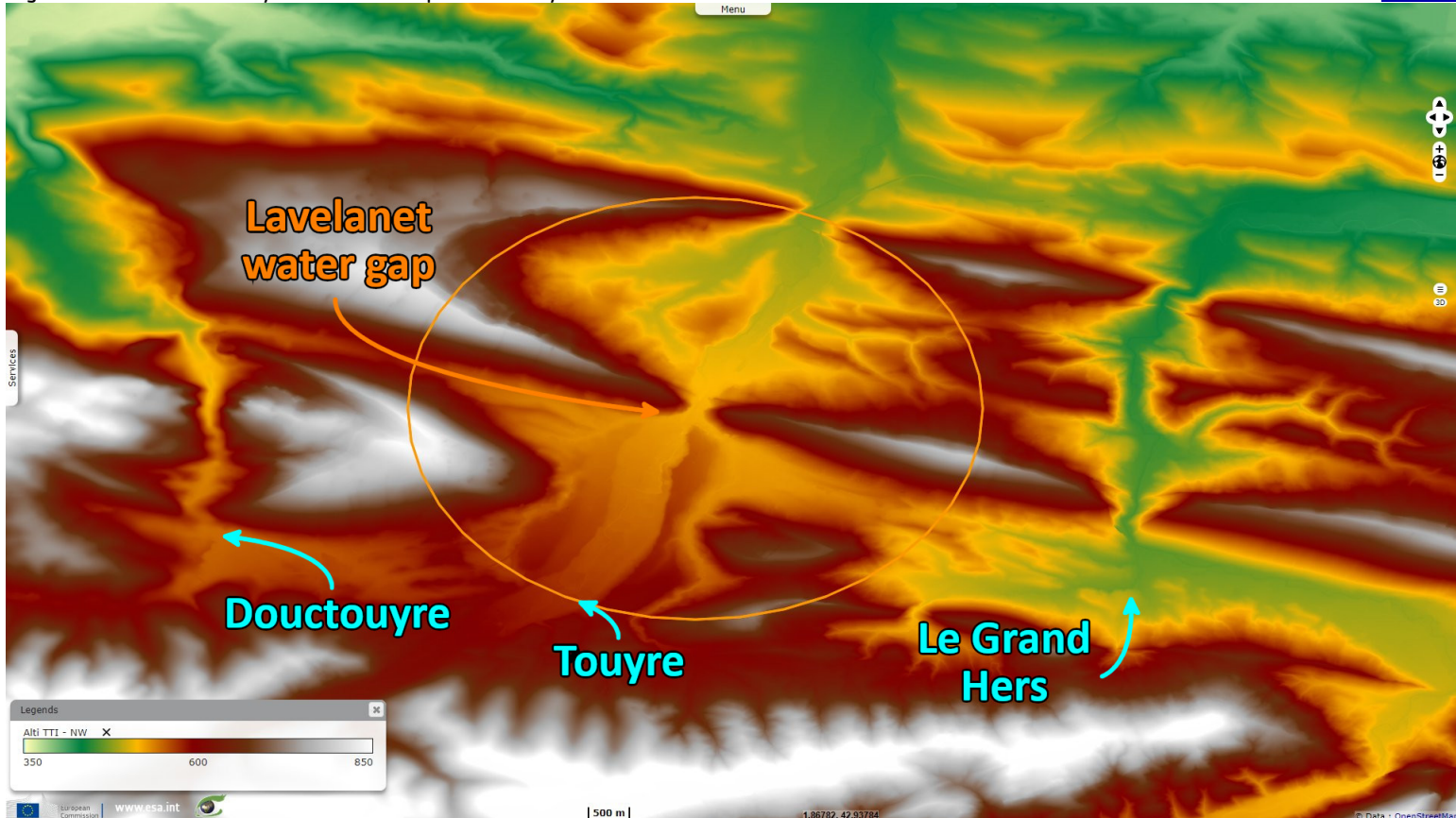


Fig. 2 - S2 (17.04.2023) - It is located around the double water gap that crosses the Plantaurel Massif. [3D view](#) [3D view](#)

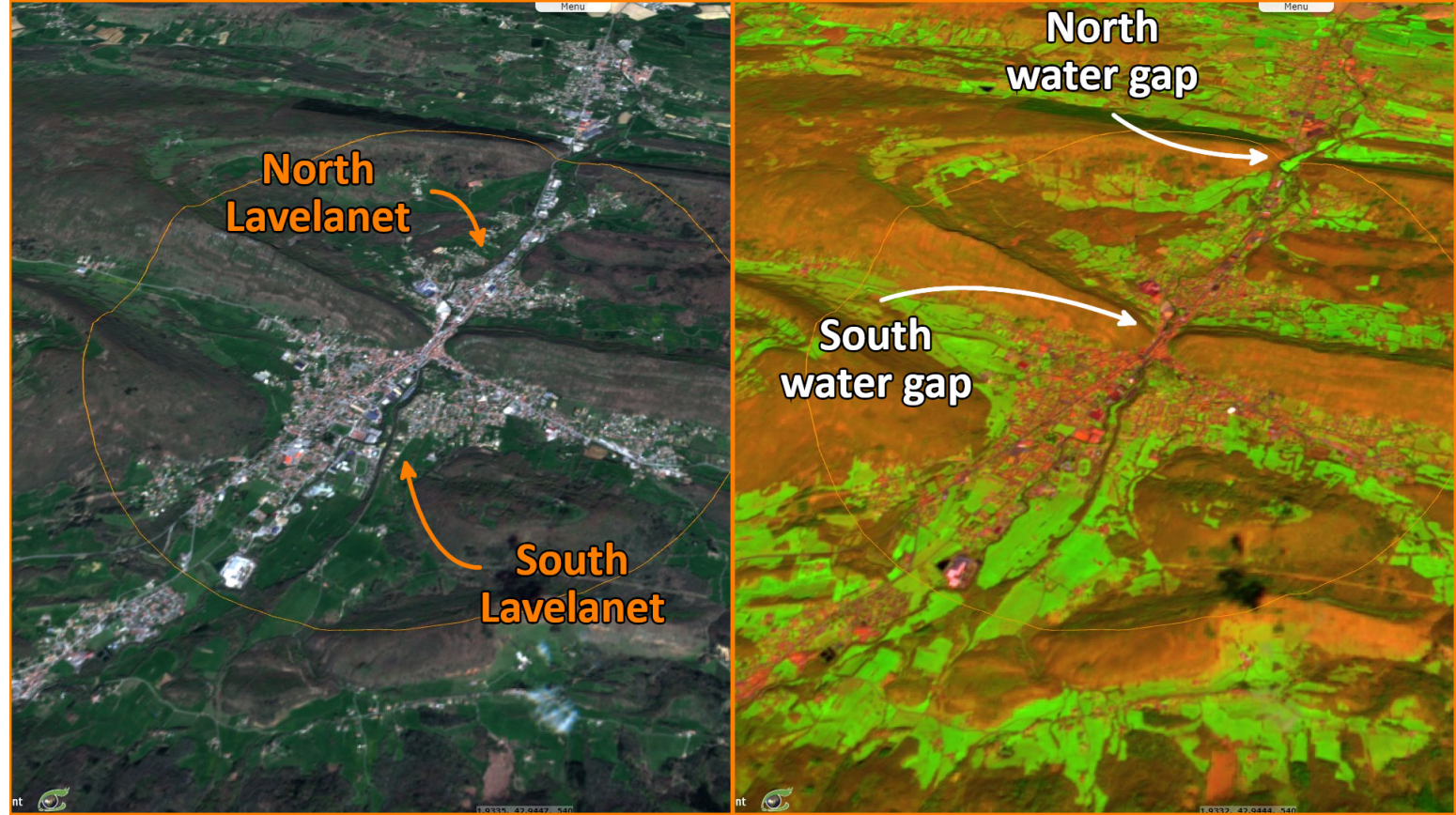
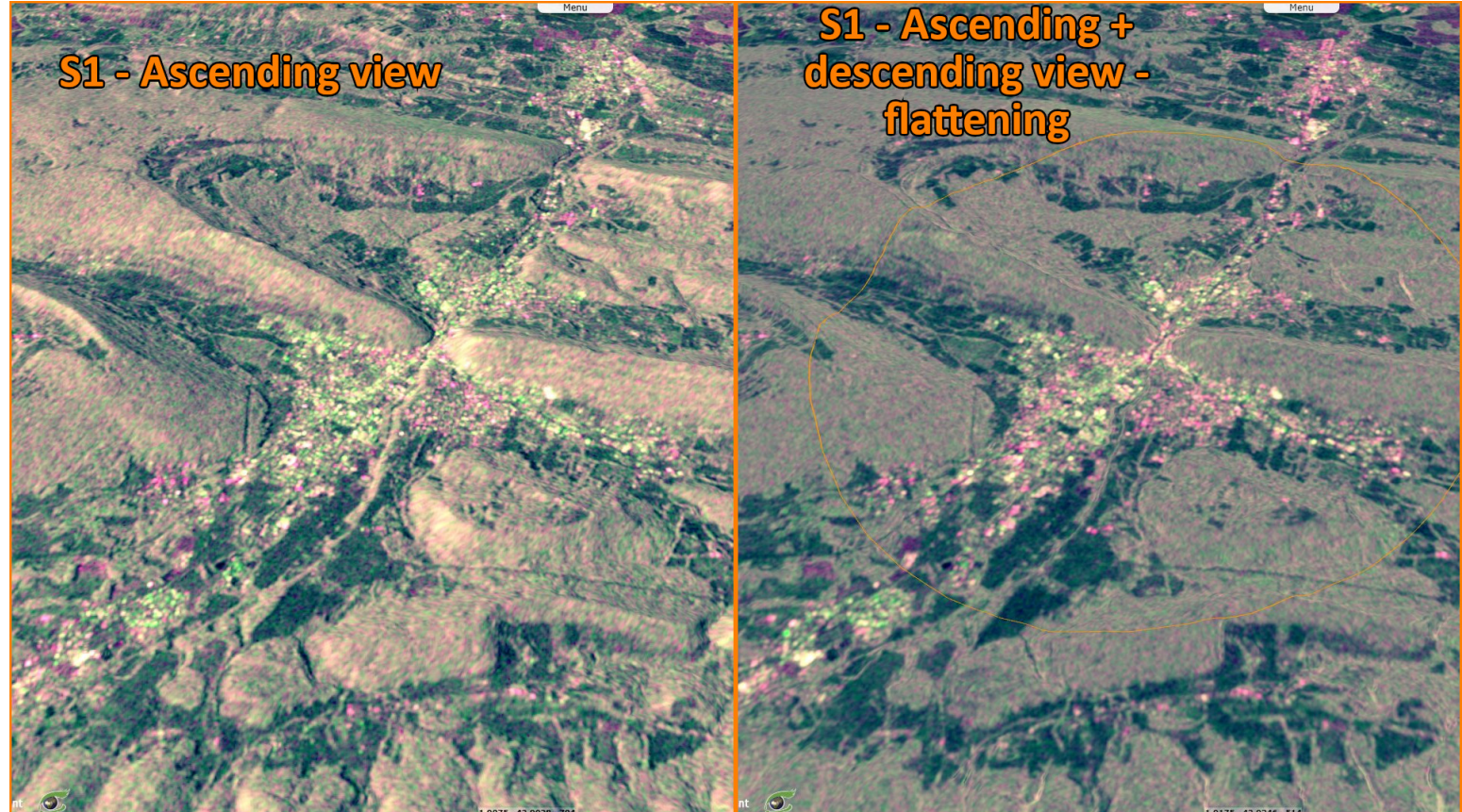


Fig. 3 - S1 (07-30.05.2023) - Ridges parallel to the main range are cut by perpendicular rivers, such as the Touyre here. [3D view](#) [3D view](#)



*The views expressed herein can in no way be taken to reflect the official opinion of the European Space Agency or the European Union.
Contains modified Copernicus Sentinel data 2023, processed by VisioTerra.*

More on European Commission space:						
More on ESA:				S-1 website	S-2 website	S-3 website
More on Copernicus program:				SciHub portal	Cophub portal	Inthub portal
More on VisioTerra:				Sentinel Vision Portal	Envisat+ERS portal	Swarm+GOCE portal
					CryoSat portal	