

Deforestation west of Pucallpa, Peruvian Amazon

Sentinel-2 MSI acquired on 13 September 2016 at 15:17:02 UTC

Sentinel-2 MSI acquired on 13 September 2018 at 15:17:01 UTC

Author(s): Sentinel Vision team, VisioTerra, France - svp@visioterra.fr

Keyword(s): Land, forestry, rainforest, deforestation, climate change, illegal logging, agriculture, palm oil field, Amazon, Peru

[2D Layerstack](#)

Fig. 1 - 13.09.2016 - 11,8,4 colour composite - The area SW of Pucallpa has already been deforested several years ago.

[2D view](#)

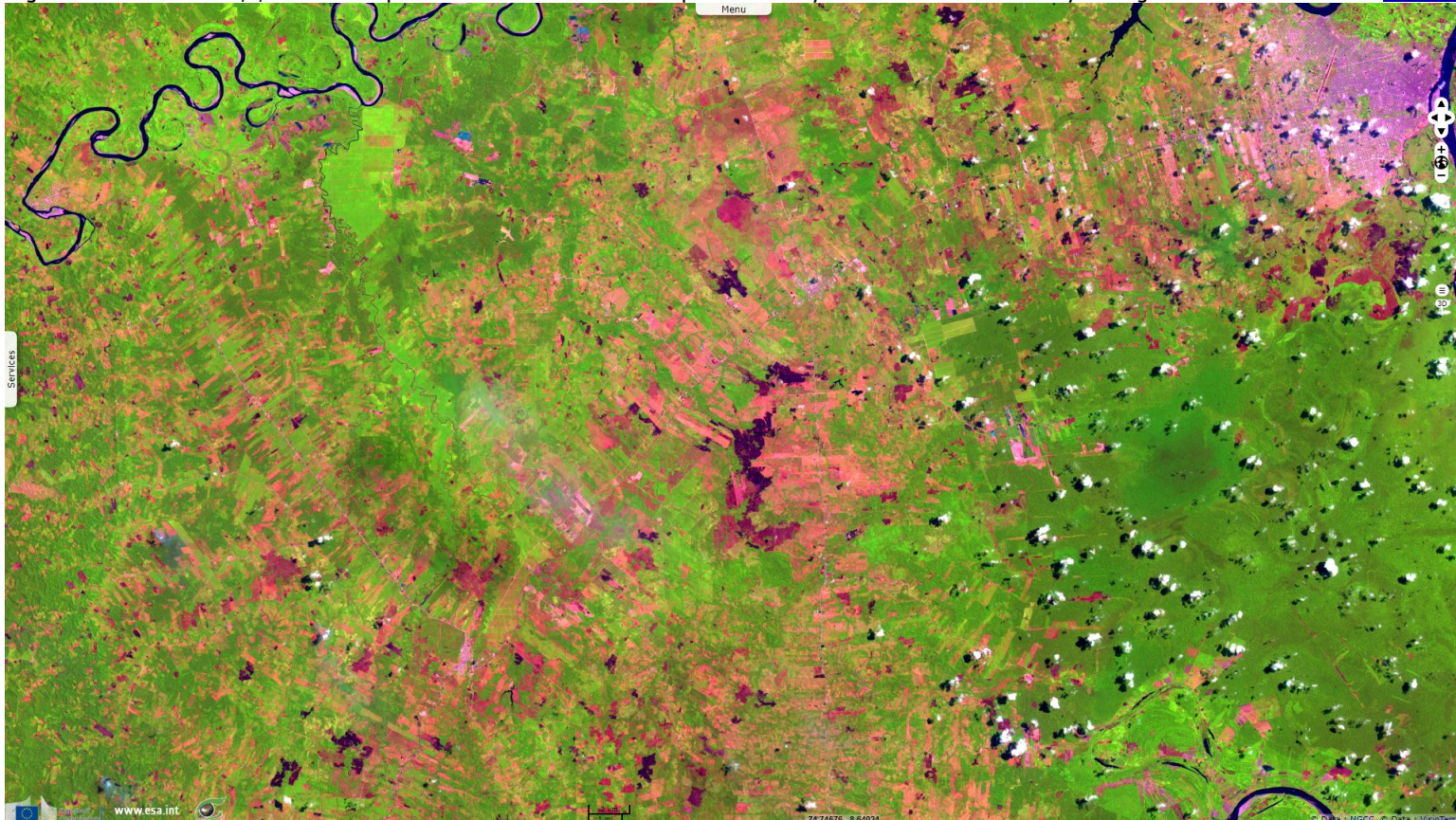


Fig. 2 - 13.09.2018 - Just north, 2 large (~60km²) industrial palm oil fields and newer small agricultural parcels have been planted.

[2D animation](#)

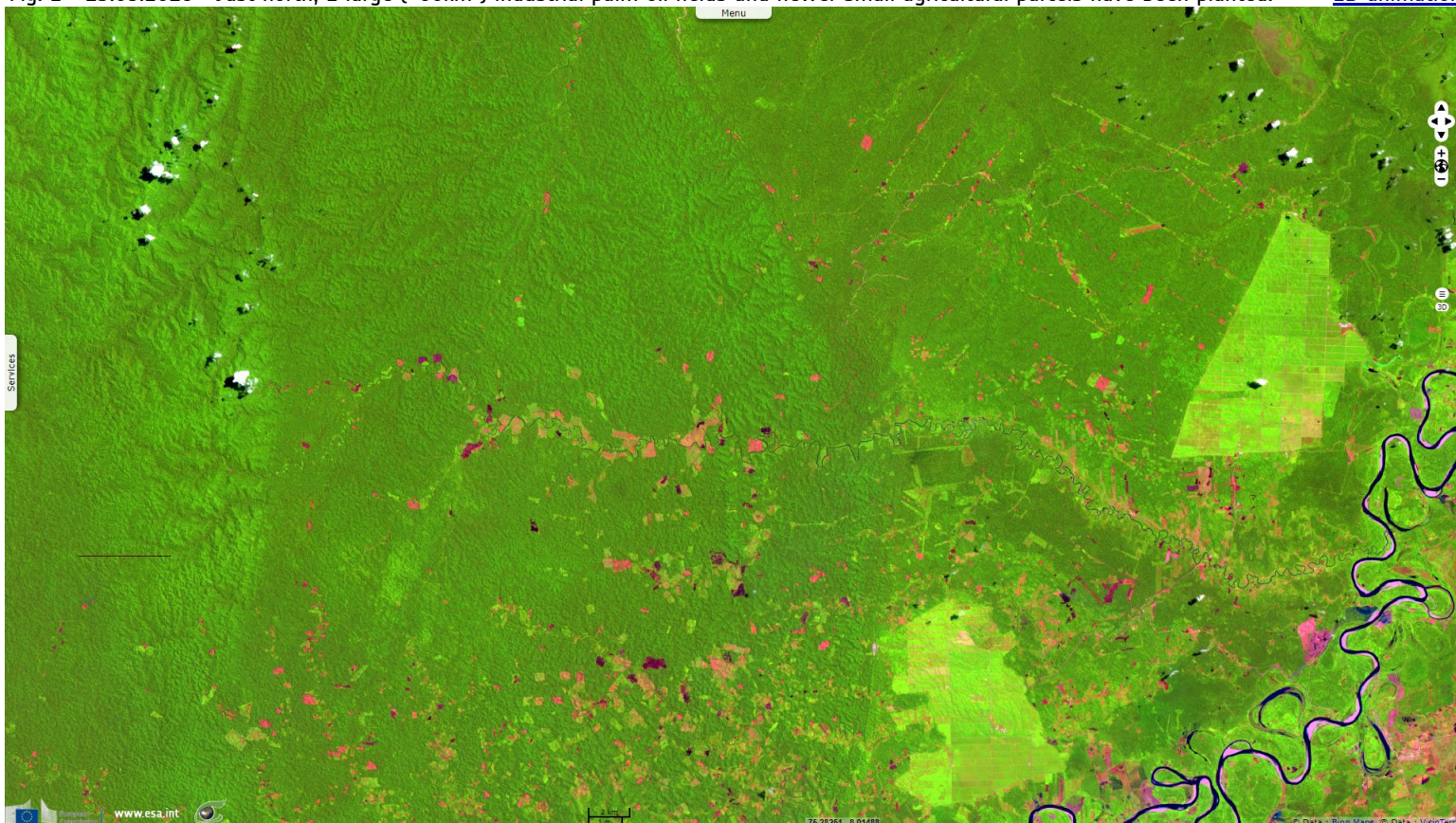


Fig. 3 - 12,11,2 colour composite - North of the previous, pioneer roads bring new settlers who burn forested land to grow crops. [3D animation](#)

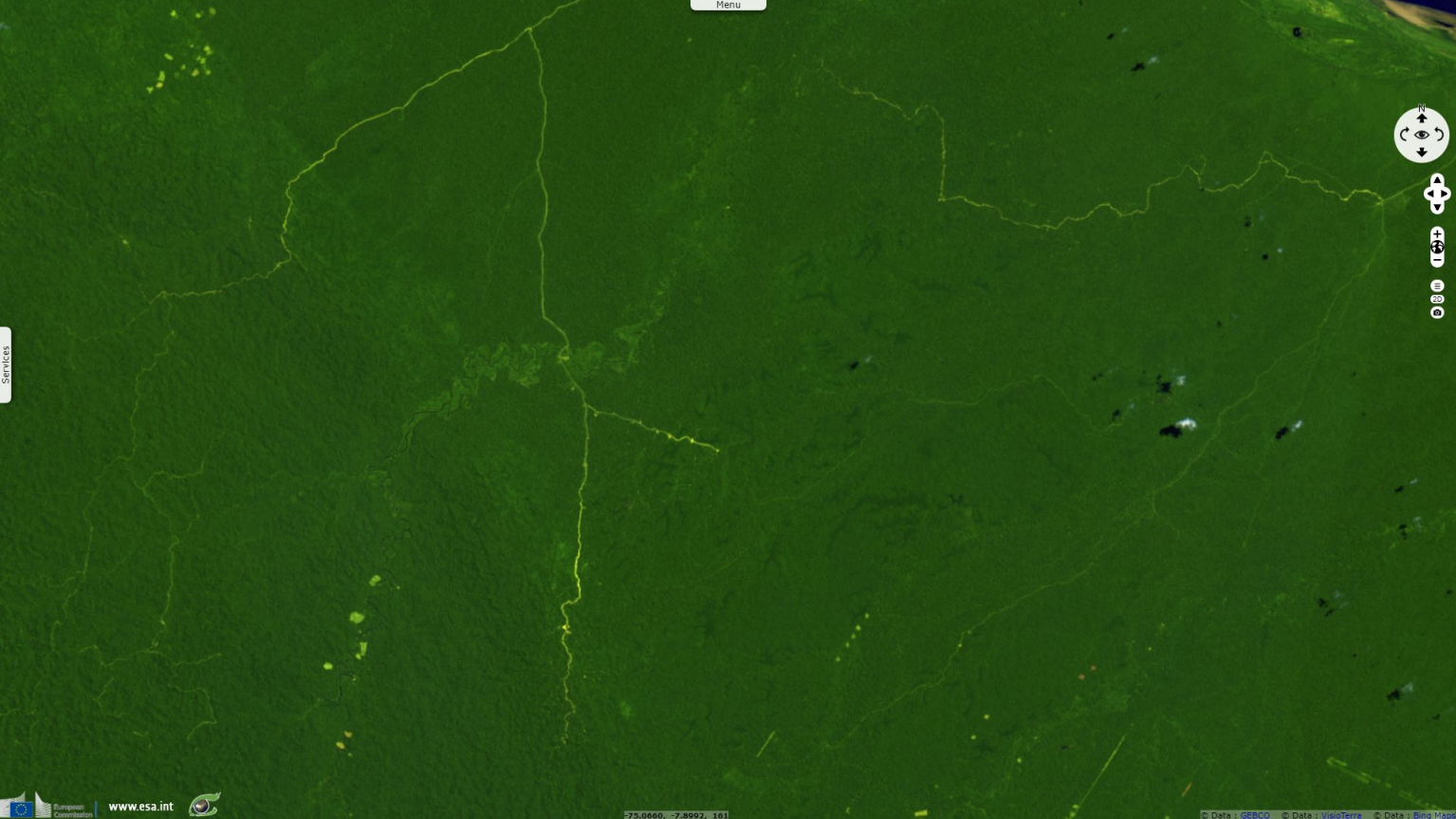














Fig. 4 - Still a bit further norther, new roads open the western bank of Ucayali river to would-be farmers. [3D animation](#)



The views expressed herein can in no way be taken to reflect the official opinion of the European Space Agency or the European Union.

More on European Commission space:							
More on ESA:				S-1 website	S-2 website	S-3 website	
More on Copernicus program:				SciHub portal	Cophub portal	Inthub portal	Colhub portal
More on VisioTerra:				Sentinel Vision Portal	Envisat+ERS portal	Swarm+GOCE portal	CryoSat portal Proba-V portal