

Hamburg and Bremerhaven, German ports on the North Sea

Sentinel-2 MSI acquired on 20 May 2018 at 10:30:19 UTC
Sentinel-1 CSAR IW acquired on 25 May 2018 at 17:08:55 UTC

Author(s): Sentinel Vision team, VisioTerra, France - svp@visioterra.fr

Keyword(s): Urban planning, infrastructure, river, port, canal, channel, Germany, North Sea.

[3D Layerstack](#)

Fig. 1 - S2 (20.05.2018) - The 3rd & 4th busiest container ports in Europe, Hamburg & Bremerhaven are both German ports on the North Sea [2D view](#)

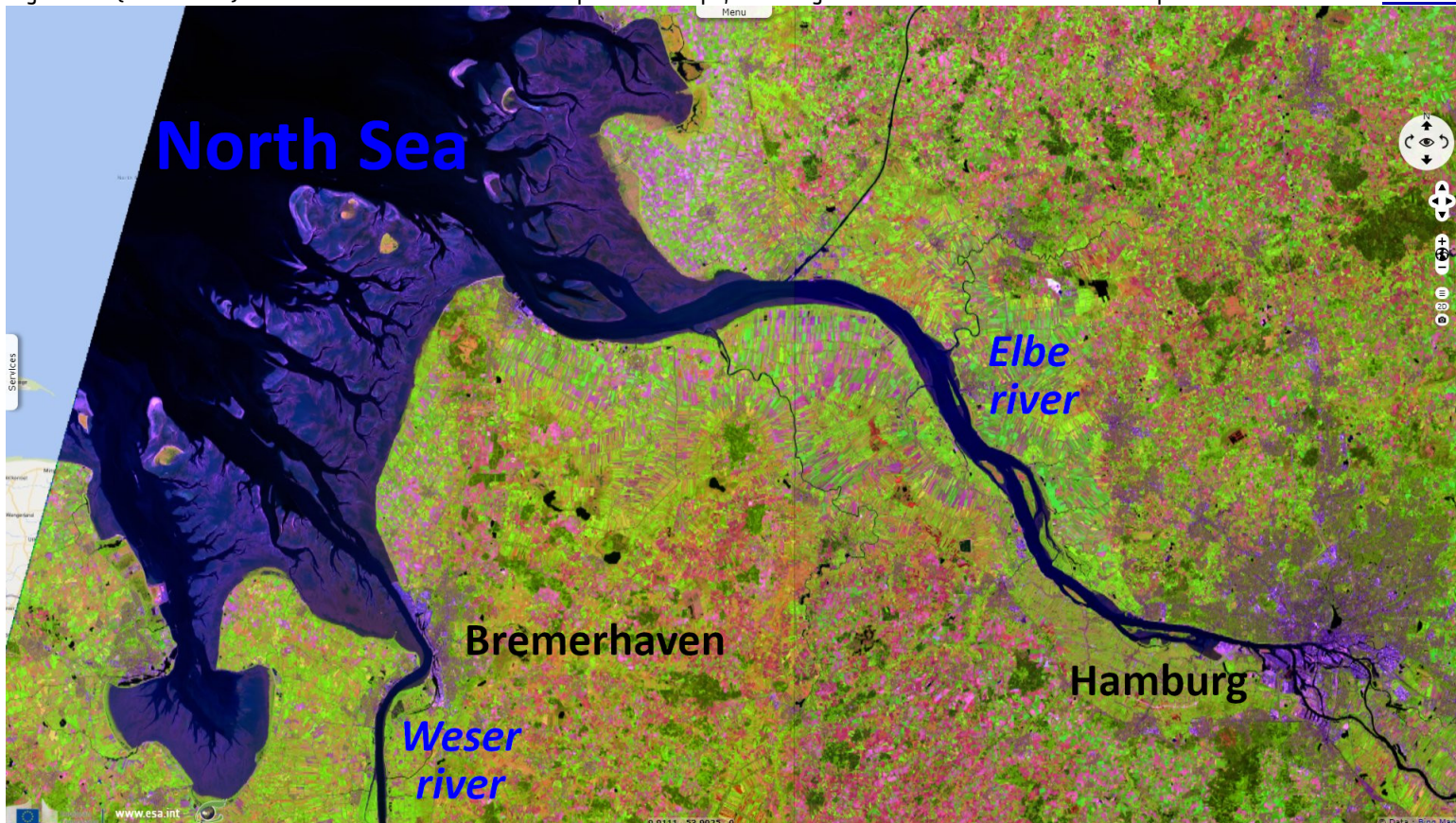


Fig. 2 - S1 (25.05.2018) - 110 km up the Elbe at the confluence with rivers Alster & Bille, Hamburg is a large city of over 1 800 000 people. [3D view](#)

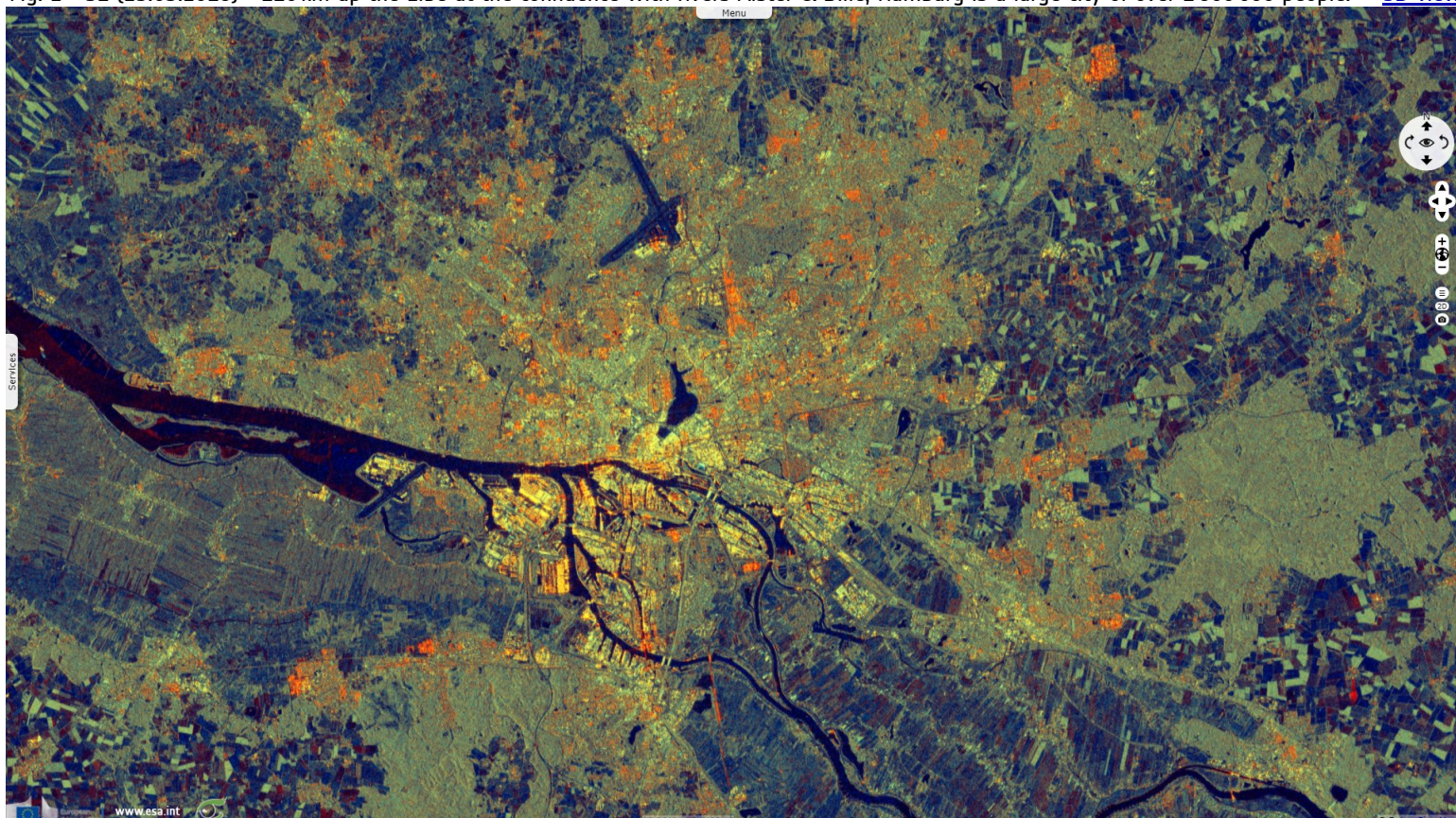


Fig. 3 - S2 (20.05.2018) - A deepwater port, Hamburg has 2500 bridges inside its city limits, more than any other city in the world.

[3D view](#)

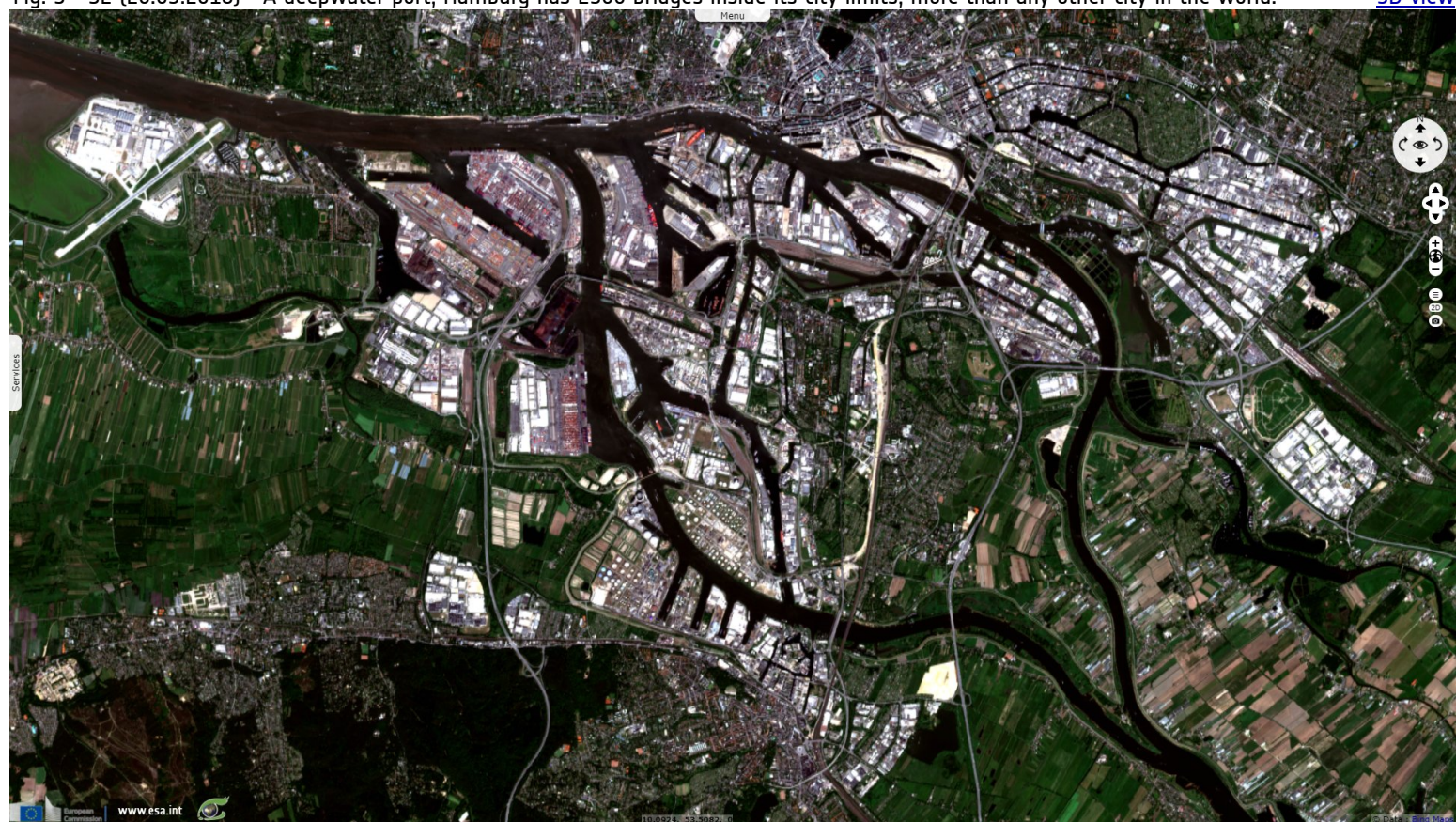
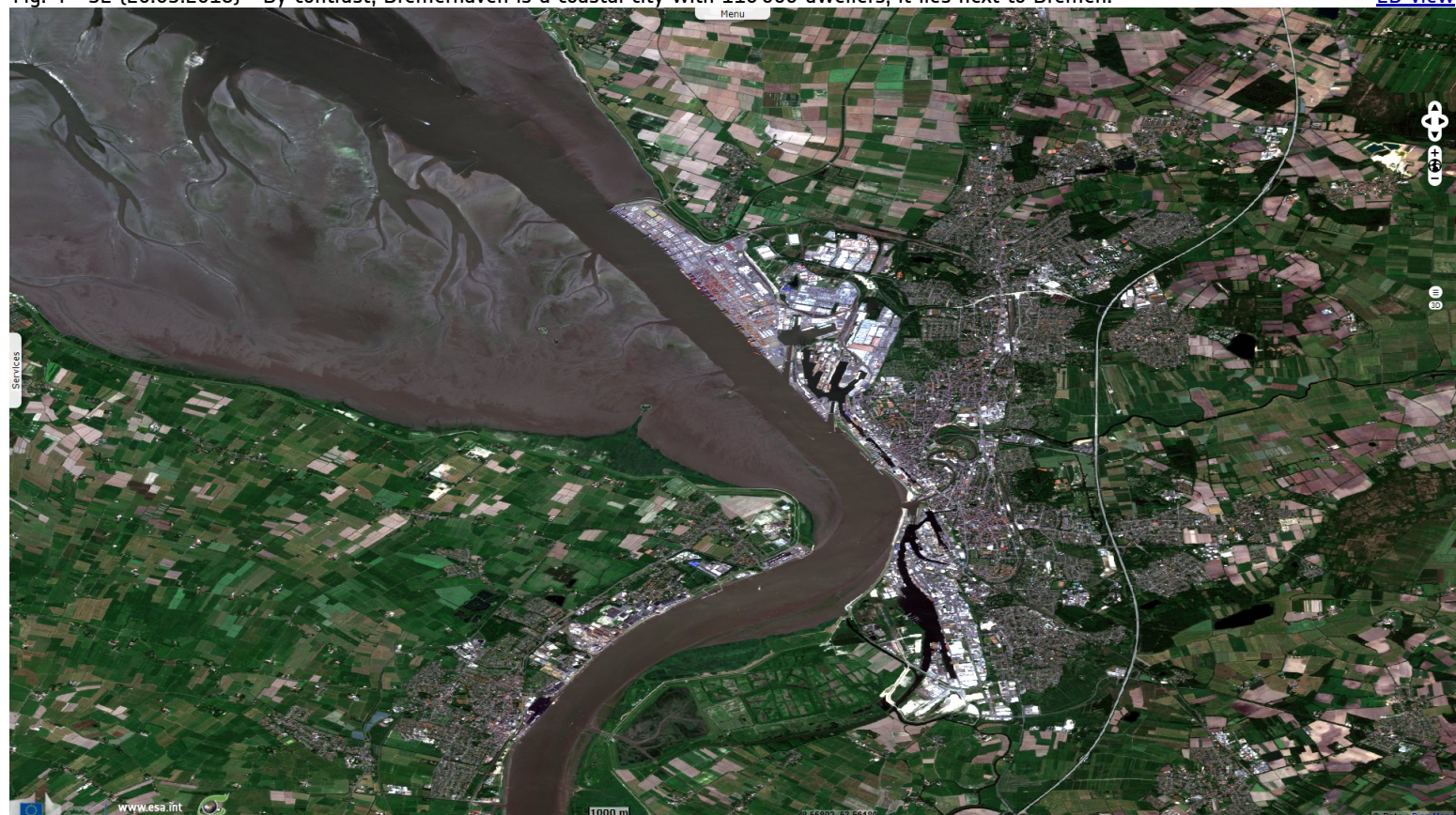


Fig. 4 - S2 (20.05.2018) - By contrast, Bremerhaven is a coastal city with 110 000 dwellers, it lies next to Bremen.

[2D view](#)



*The views expressed herein can in no way be taken to reflect the official opinion of the European Space Agency or the European Union.
Contains modified Copernicus Sentinel data 2021, processed by VisioTerra.*

More on European Commission space:						
More on ESA:				S-1 website	S-2 website	S-3 website
More on Copernicus program:				SciHub portal	Cophub portal	Inthub portal
More on VisioTerra:				Sentinel Vision Portal	Envisat+ERS portal	Swarm+GOCE portal
					CryoSat portal	